

8

7

6

5

4

3

2

1

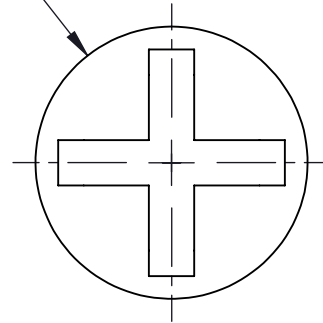
VICOR CONFIDENTIAL

THIS DOCUMENT AND THE DATA DISCLOSED HEREIN OR HEREWITH IS NOT TO BE REPRODUCED, USED OR DISCLOSED IN WHOLE OR IN PART TO ANYONE WITHOUT THE PERMISSION OF VICOR CORP.

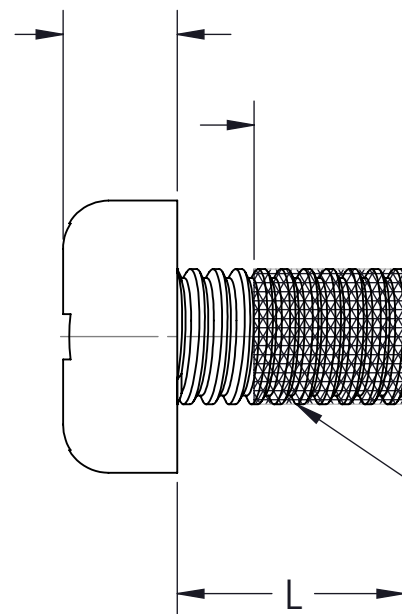
REV.	DESCRIPTION	INTL	DATE	APVD
1	RELEASED PER E080722	SA	4/9/08	REJH
2	REVISED PER E100944	KUK	07/22/10	DCS
3	REVISED PER E130746	KUK	05/15/13	REJH
4	REVISED PER E160269	GCK	03/03/16	AM
5	REVISED PER E160532b	GCK	05/25/16	MTB

($\phi 6.000$ MAX)
[.236]

PHILIPS PAN
HEAD SCREW
DIN 7985



(2.52 MAX)
[.10]



3.302±.6
[.13±.02]
THREAD LOCK
SEE NOTE 3


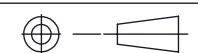
M3 X 0.5

KIT #	PART # / DASH CONDITION	
44337	34706-04	L = 4.0±0.3[0.16±0.01] LONG
34716	34706-05	L = 5.0±0.3[0.20±0.01] LONG
34715	34706-06	L = 6.0±0.3[0.24±0.01] LONG
39961	34706-08	L = 8.0±0.3[0.31±0.01] LONG
43804	34706-09	L = 9.0±0.3[0.35±0.01] LONG
43805	34706-10	L = 10.0±0.3[0.39±0.01] LONG

NOTES:

- MATL: STAINLESS STEEL 18-8 PASSIVATED.
- REMOVE ALL BURRS AND SHARP EDGES.
- MACHINE APPLY LOCTITE DRI-LOC 204 OR EQUIVALENT TO THREADS AS SHOWN.
- RoHS COMPLIANT PER CST-0001 LATEST REVISION.



DRAWN BY	DATE			SWD	
R.E.J. Hickey	3/31/2008				
UNLESS OTHERWISE SPECIFIED DIMENSIONS ARE MM /[INCH]		SCREW M3x.5 PHIL PH SS W/ THD LOCK			
TOLERANCES ARE: DECIMALS ANGLES X.XX [X.XX] = ±0.25 [0.01] ±1° X.XXX [X.XXX] = ±0.127 [0.005]					
THIRD ANGLE PROJECTION		SIZE	CAGE CODE	DWG NO	REV
 DO NOT SCALE DRAWING		B	67131	34706-XX	5
		SCALE 6:1	SHEET 1 OF 1		

8

7

6

5

4

3

2

1