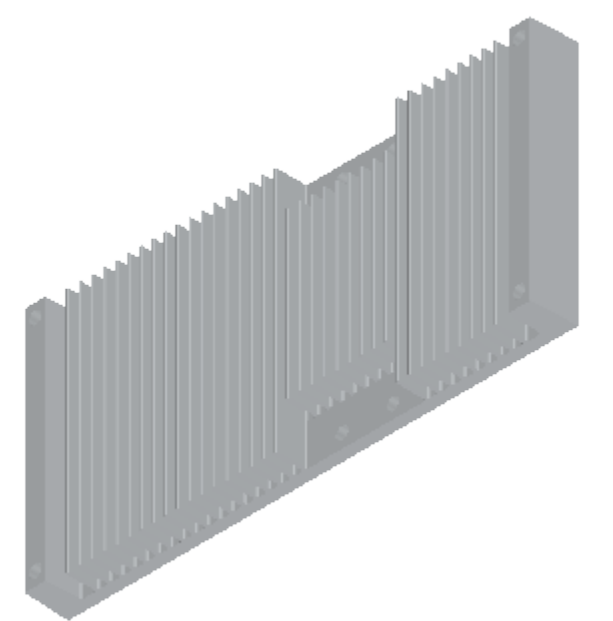
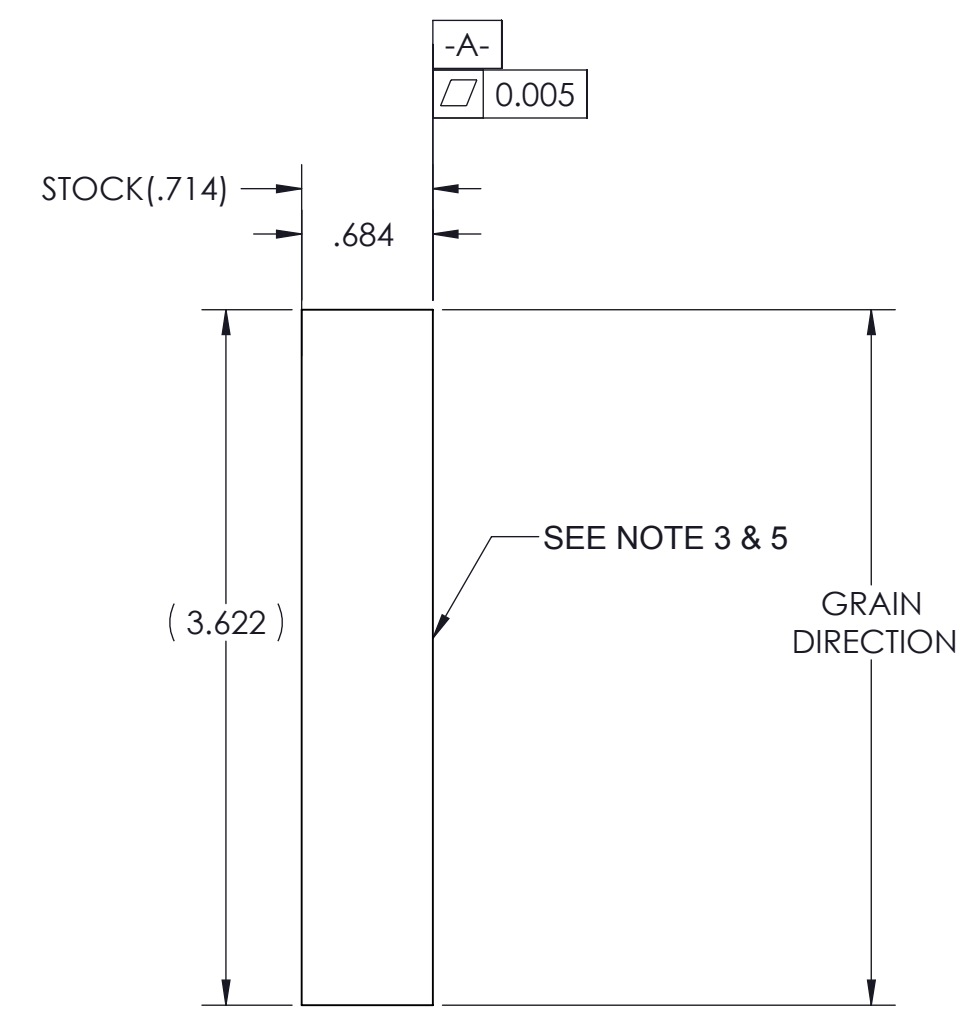
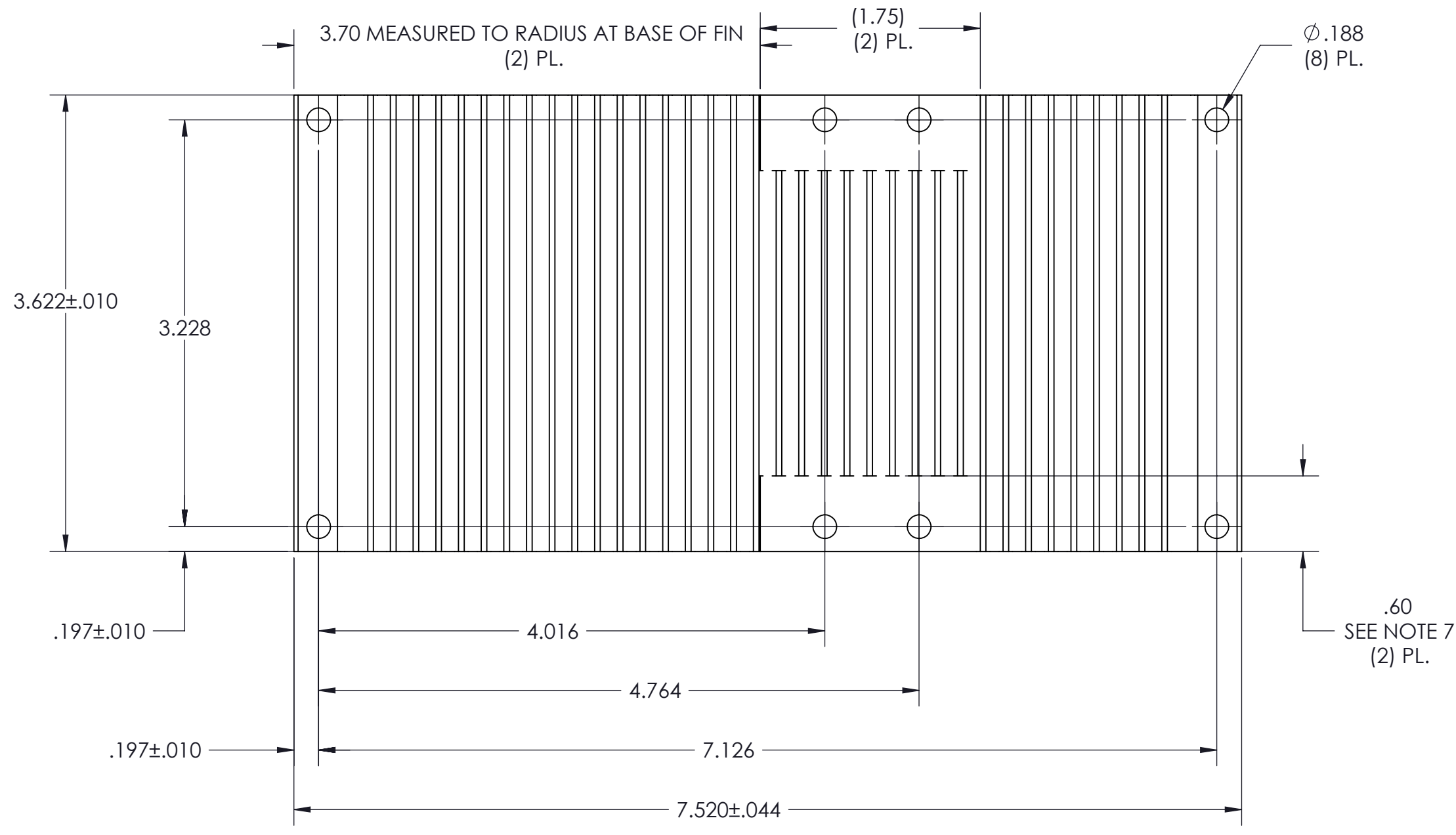
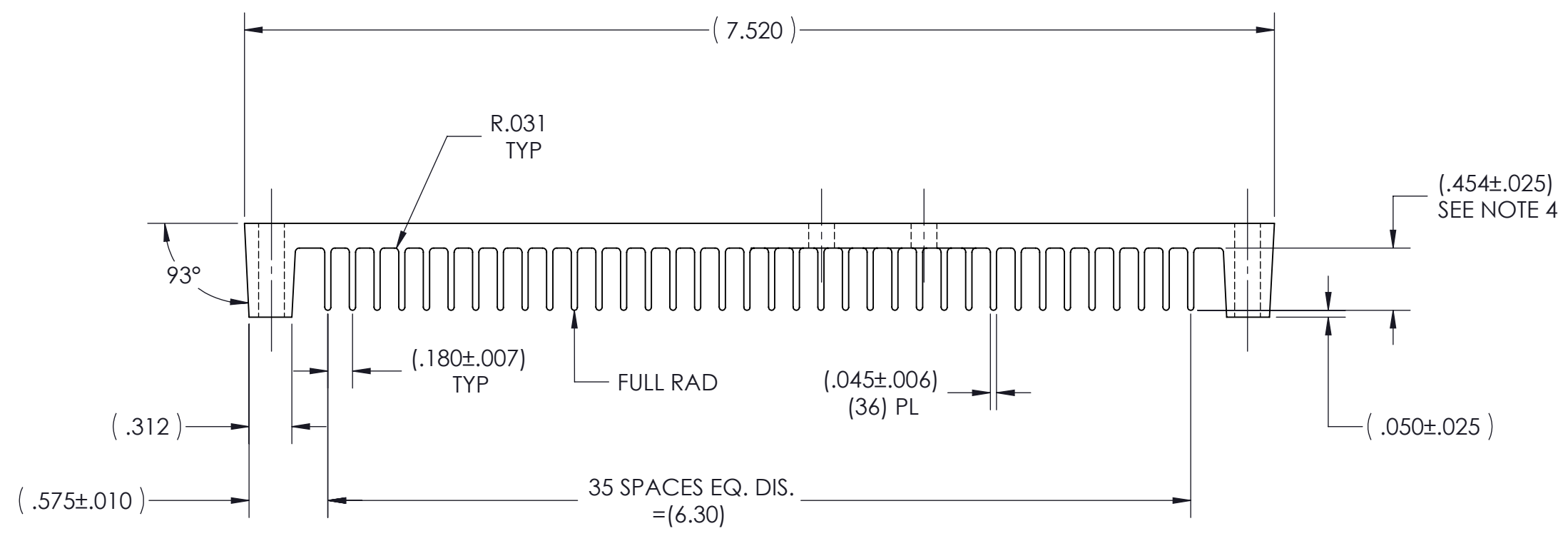


VICOR CONFIDENTIAL  
 THIS DOCUMENT AND THE DATA DISCLOSED HEREIN OR  
 HEREWITH IS NOT TO BE REPRODUCED, USED OR  
 DISCLOSED IN WHOLE OR IN PART TO ANYONE WITHOUT  
 THE PERMISSION OF VICOR CORP.

REV.	DESCRIPTION	INTL	DATE	APVD
1	RELEASED PER E054246	PEI	01/03/06	ECF
2	REVISED PER E100888A	KUK	07/09/10	DCS
3	REVISED PER E200054	PNP	02/07/20	RLT



- NOTES:
- MATERIAL: ALUM. 6063-T5 (EXT#82655)(040393)
  - REMOVE ALL BURRS AND SHARP EDGES.
  - CLEAR FINISH, RoHS COMPLIANT, CHROMIUM FREE PER CST-0001 LATEST REVISION.
  - TOLERANCE ON DIMENSION INDICATED TO ALLOW FOR CROWN OF RAW STOCK.
  - NO MACHINING MISMATCH PERMITTED THIS SURFACE.
  - NOTES 3 AND 5 ARE CRITICAL CHARACTERISTIC FOR LOT INSPECTION.
  - FINS SHALL BE MILLED FLUSH TO BASE OR -.010" UNDER FLUSH.
  - VICOR WORKMANSHIP SPECIFICATIONS WS-0003 AND WS-0007 APPLY TO THE FABRICATION OF THIS ITEM.
  - DIMENSIONS ARE INCHES ONLY.

DRAWN BY	DATE	<b>VICOR</b> SWD			
UNLESS OTHERWISE SPECIFIED DIMENSIONS ARE : INCH/ [MM]		<b>HS XF 17.37MM CFG "E" &amp; "F"</b>			
TOLERANCES ARE: DECIMALS                      ANGLES X.XX [X.XX] = ±0.01 [0.25]    ±1° X.XXX [X.XXX] = ±0.005 [0.127]		SIZE	CAGE CODE	DWG NO	REV
THIRD ANGLE PROJECTION		<b>C</b>	<b>67131</b>	<b>32179</b>	<b>3</b>
DO NOT SCALE DRAWING		SCALE 1:1	SHEET 1 OF 1		