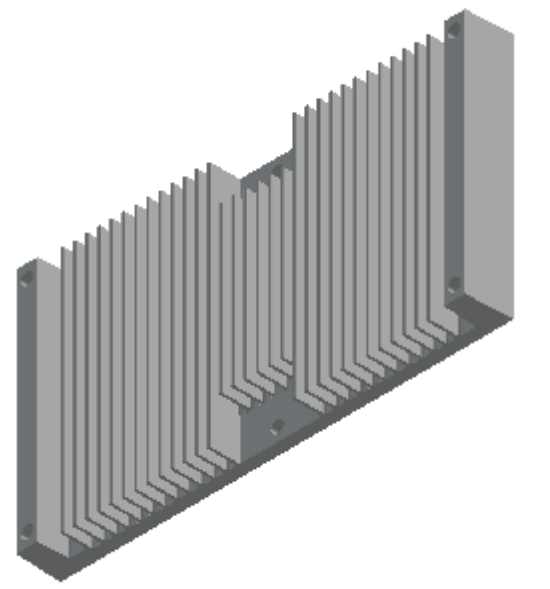
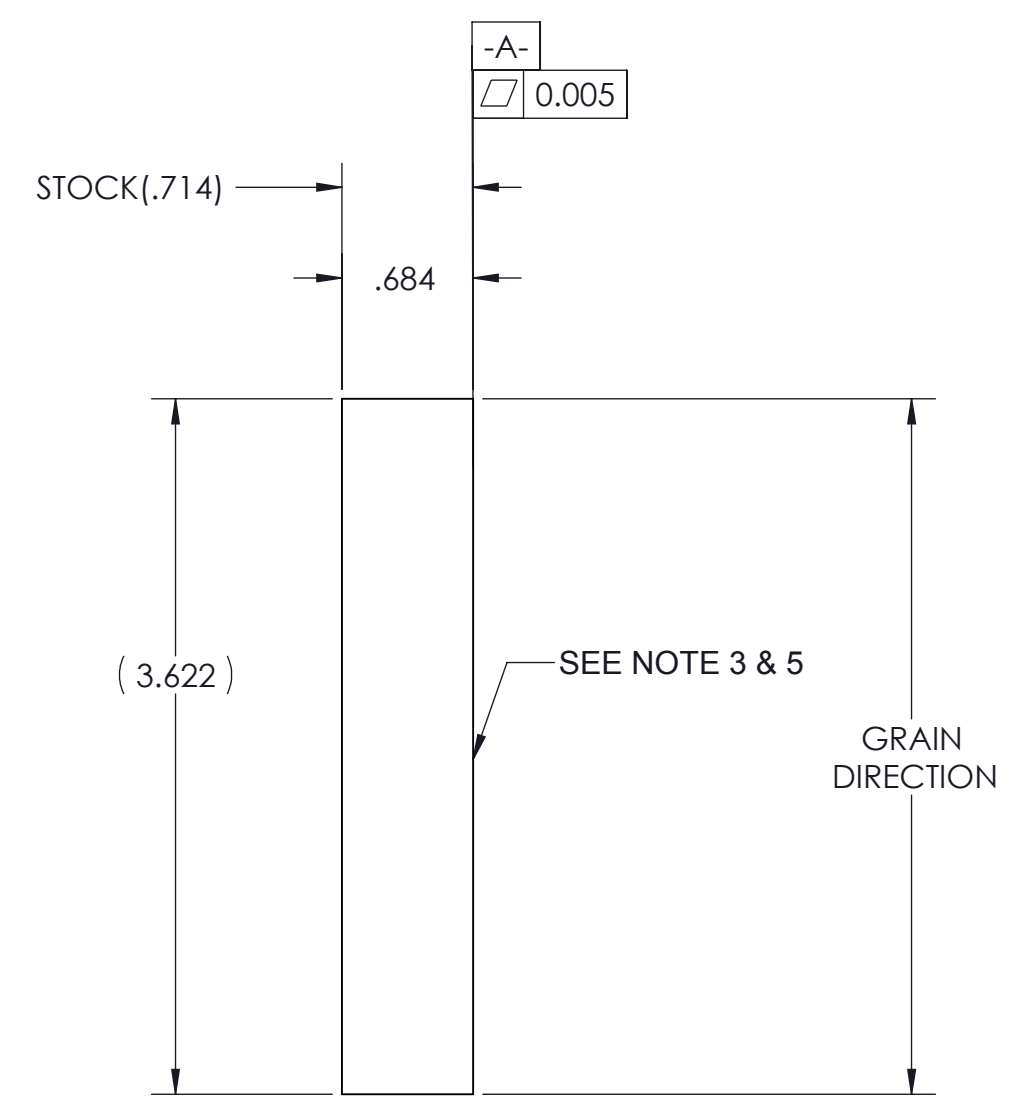
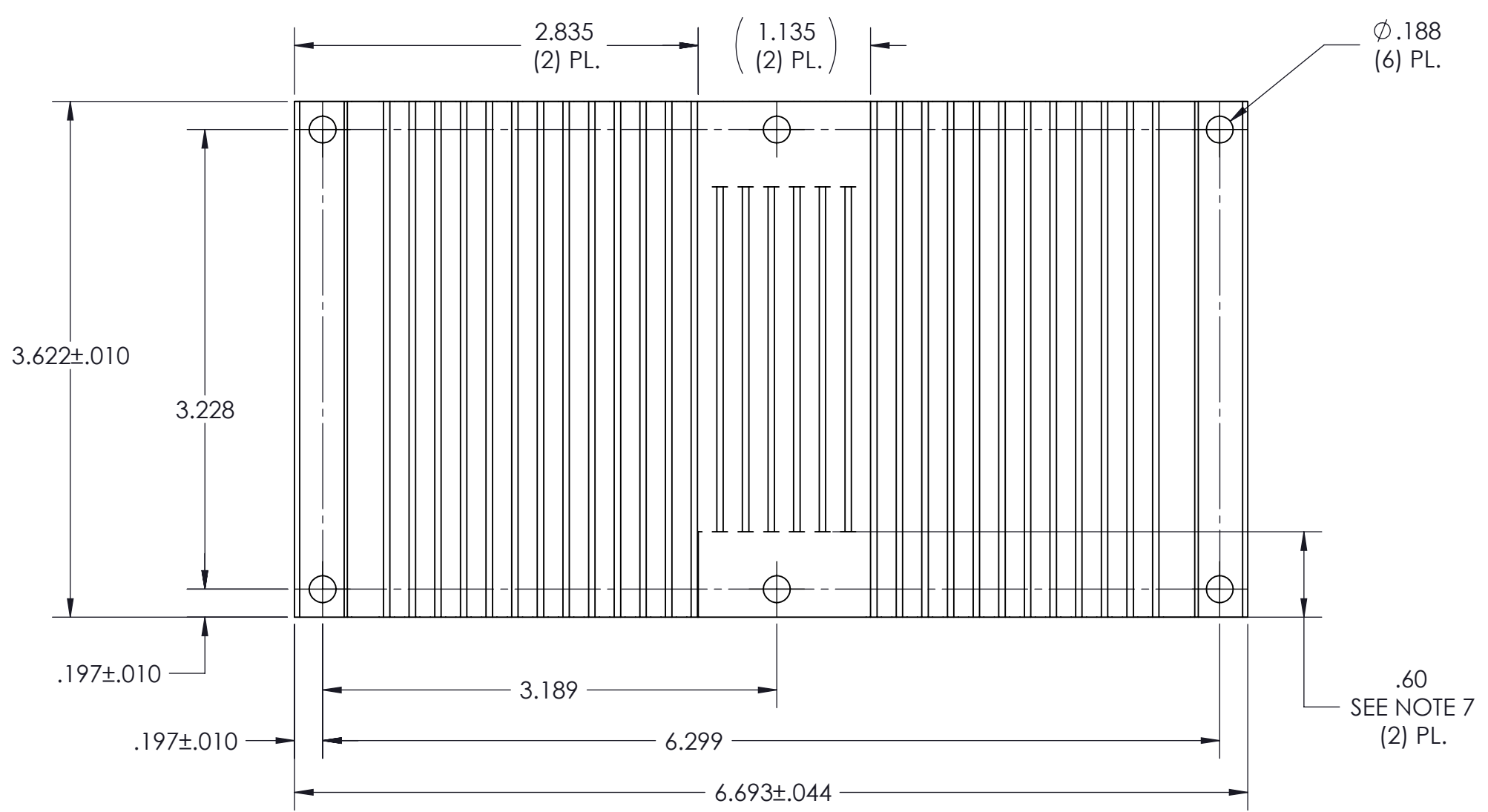
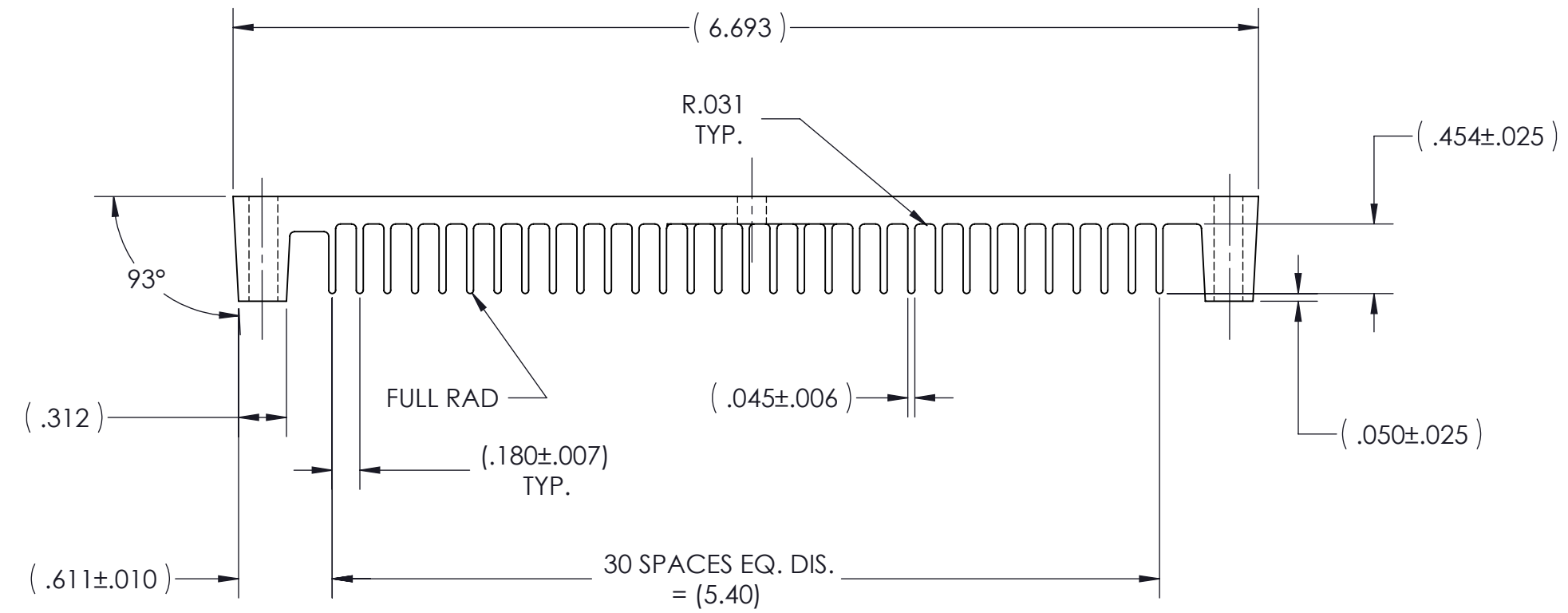
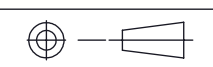


VICOR CONFIDENTIAL
 THIS DOCUMENT AND THE DATA DISCLOSED HEREIN OR
 HEREWITH IS NOT TO BE REPRODUCED, USED OR
 DISCLOSED IN WHOLE OR IN PART TO ANYONE WITHOUT
 THE PERMISSION OF VICOR CORP.

REV.	DESCRIPTION	INTL	DATE	APVD
1	RELEASED PER E054246	PEI	1/3/06	ECF
2	REVISED PER E100888A	KUK	07/09/10	DCS
3	REVISED PER E131522b	GCK	11/1/13	RW



- NOTES:
1. MATERIAL: ALUMINUM 6063-T5(EXT#82650)(040392).
 2. REMOVE ALL BURRS AND SHARP EDGES.
 3. CLEAR FINISH, RoHS COMPLIANT, CHROMIUM FREE PER CST-0001 LATEST REVISION.
 4. TOLERANCE ON DIMENSION INDICATED TO ALLOW FOR CROWN OF RAW STOCK.
 5. NO MACHINING MISMATCH PERMITTED THIS SURFACE.
 6. NOTES 3 AND 5 ARE CRITICAL CHARACTERISTIC FOR LOT INSPECTION.
 7. FINS SHALL BE MILLED FLUSH TO BASE OR UP TO -.010 UNDER FLUSH.
 8. VICOR WORKMANSHIP SPECIFICATIONS WS-0003 AND WS-0007 APPLY TO THE FABRICATION OF THIS ITEM.
 9. DIMENSIONS ARE INCHES ONLY.

DRAWN BY Krishna Kamath	DATE 5/14/2010	VICOR SWD		
UNLESS OTHERWISE SPECIFIED DIMENSIONS ARE : INCH / (MM)		HS XF 17.37MM CFG "A" - "D"		
TOLERANCES ARE: DECIMALS ±.01 (0.25) X.XXX [X.X] = ±0.005 (0.127)		SIZE C	CAGE CODE 67131	DWG NO 32178
THIRD ANGLE PROJECTION 		SCALE 1:1	REV 3	SHEET 1 OF 1