

8

7

6

5

4

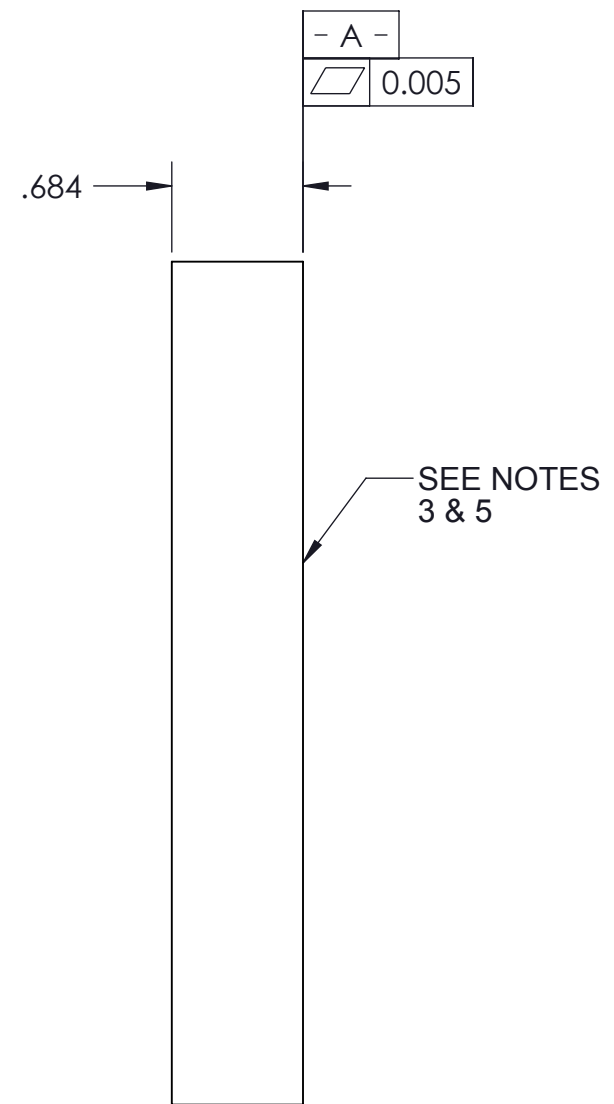
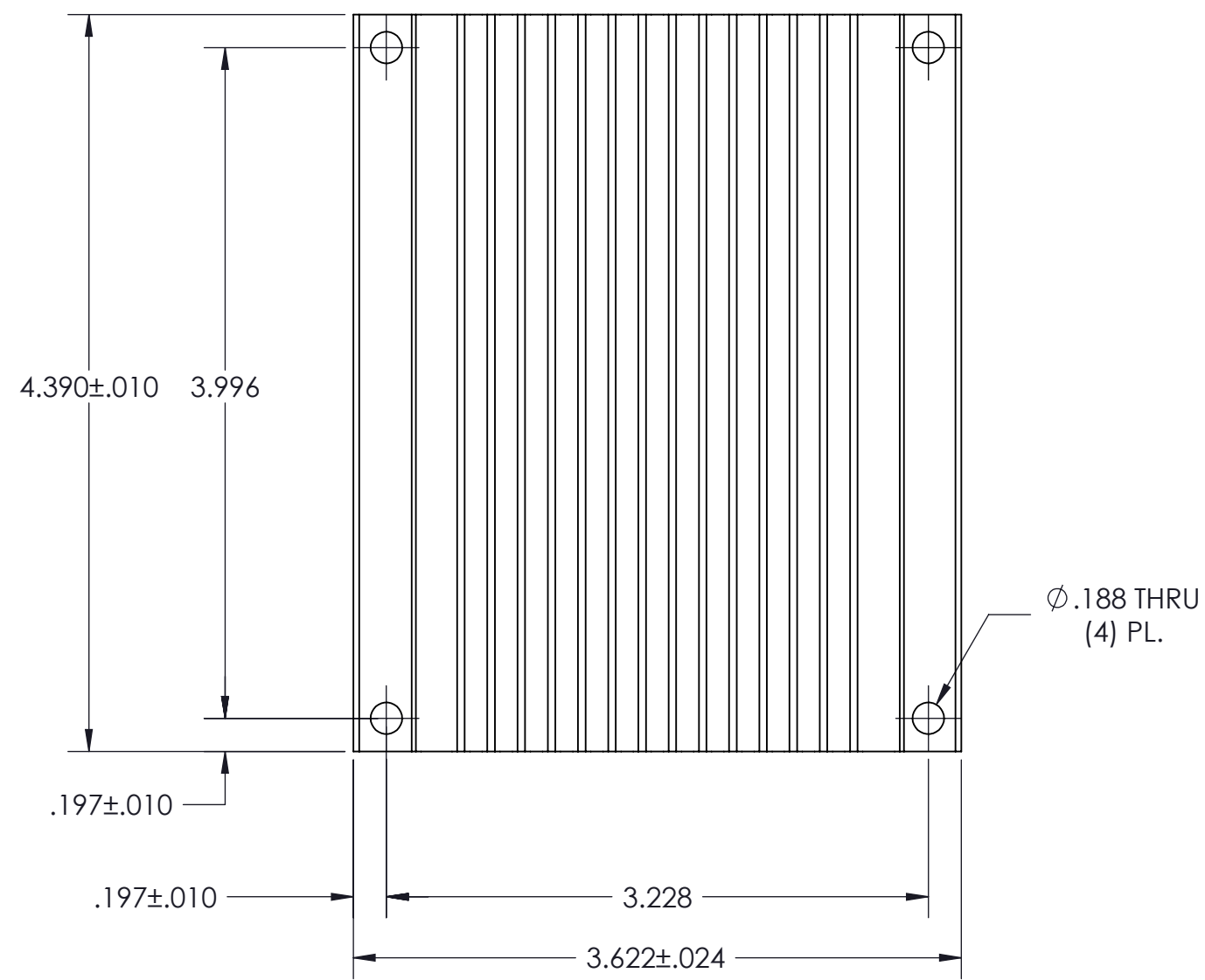
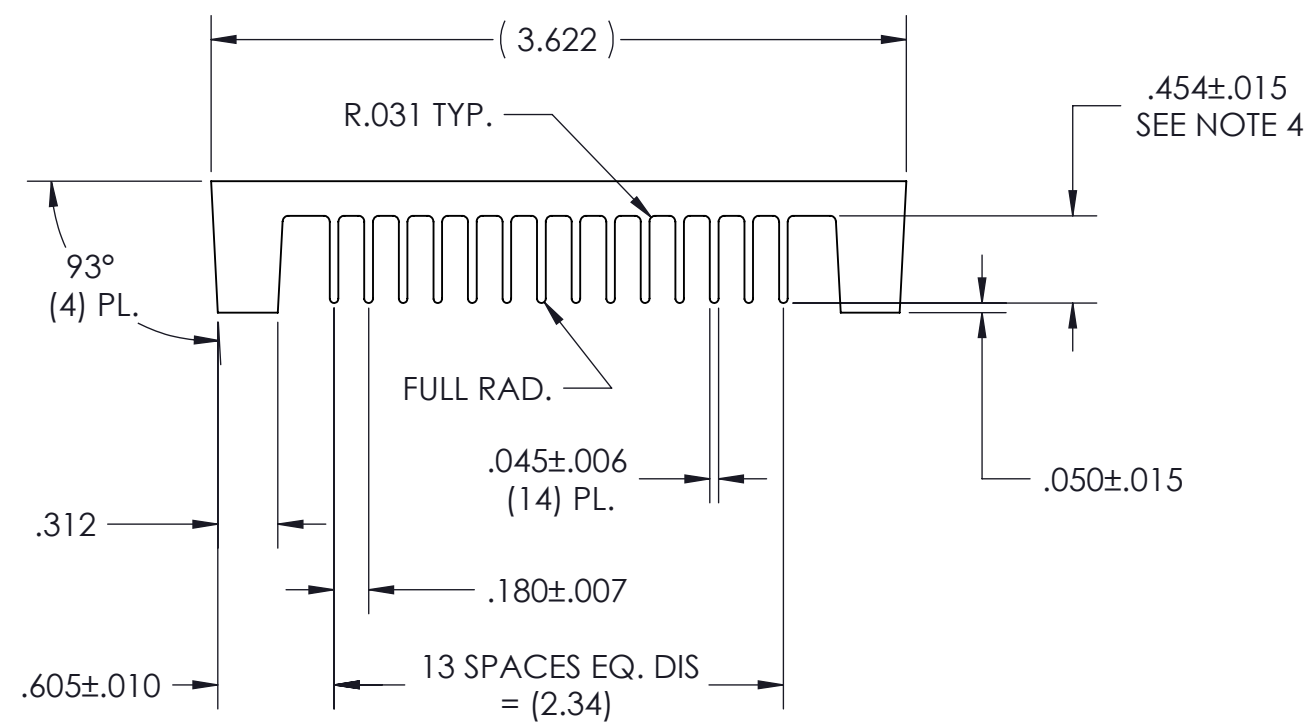
3

2

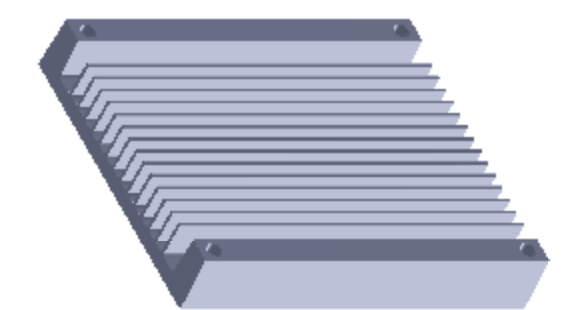
1

VICOR CONFIDENTIAL
 THIS DOCUMENT AND THE DATA DISCLOSED HEREIN OR
 HEREWITH IS NOT TO BE REPRODUCED, USED OR
 DISCLOSED IN WHOLE OR IN PART TO ANYONE WITHOUT
 THE PERMISSION OF VICOR CORP.

REVISIONS				
REV	DESCRIPTION	DATE	APPROVED	
1	RELEASED PER E054246	PEI	1/3/06	ECF
2	REVISED PER E100888A	KUK	7/9/10	DCS



- NOTES:
1. MATERIAL: ALUMINUM 6063-T5
 2. REMOVE ALL BURRS AND SHARP EDGES.
 3. CLEAR FINISH, RoHS COMPLIANT, CHROMIUM FREE PER CST-0001 LATEST REVISION.
 4. TOLERANCE ON DIMENSION INDICATED TO ALLOW FOR CROWN OF RAW STOCK.
 5. NO MACHINING MISMATCH PERMITTED THIS SURFACE.
 6. ○ DENOTES CRITICAL CHARACTERISTIC FOR LOT INSPECTION.
 7. VICOR WORKMANSHIP SPECIFICATIONS WS-0003 AND WS-0007 APPLY TO THE FABRICATION OF THIS ITEM.
 8. DIMENSIONS ARE INCHES ONLY.



DRAWN	DATE				
P.E.IENI	12/08/05				
MATERIAL	UNLESS OTHERWISE SPECIFIED DIMENSIONS ARE INCH [MM] TOLERANCES ARE: DECIMALS ANGLES X.XX [X.X] = ±0.01 [0.25] ±1° X.XXX [X.XX] = ±0.005 [0.127]	F/A HS CFG "G" & "H" LONG FLOW ARRAY (VIPAC)			
FINISH	THIRD ANGLE PROJECTION DO NOT SCALE DRAWING				SIZE
		C	67131	32177	2
		SCALE 1 : 1		SHEET 1 OF 1	

8

7

6

5

4

3

2

1