

8

7

6

5

4

3

2

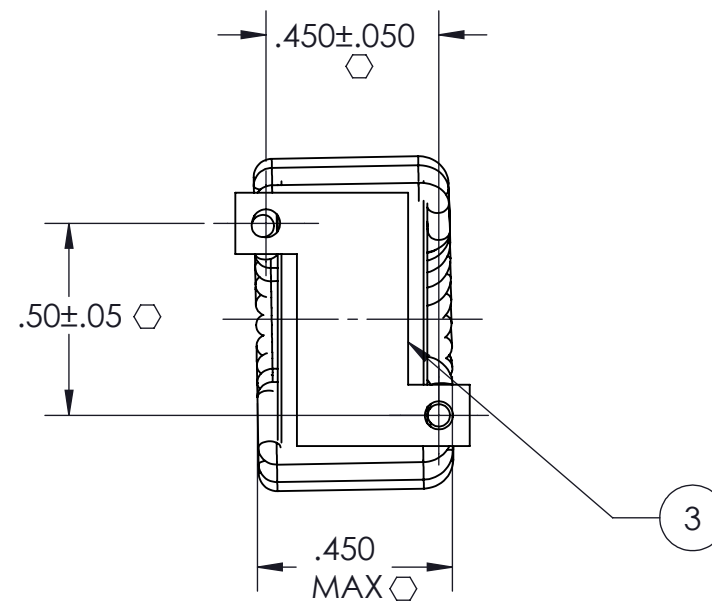
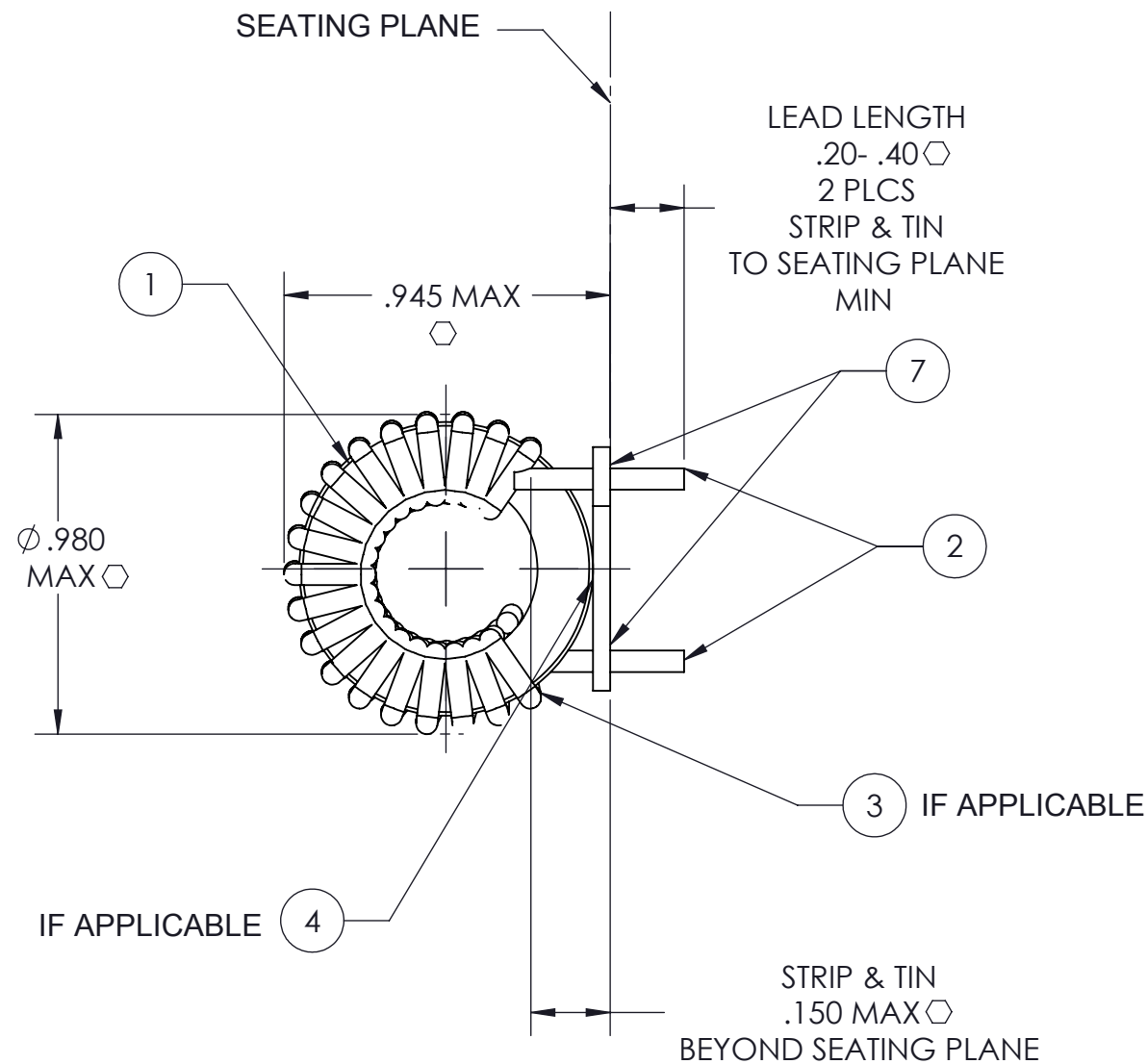
1

VICOR CONFIDENTIAL

THIS DOCUMENT AND THE DATA DISCLOSED HEREIN OR HEREWITH IS NOT TO BE REPRODUCED, USED OR DISCLOSED IN WHOLE OR IN PART TO ANYONE WITHOUT THE PERMISSION OF VICOR CORP.

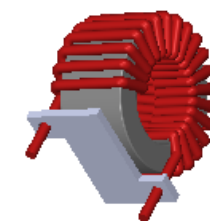
REVISIONS

REV	DESCRIPTION	DATE	APPROVED
1	RELEASED PER E060461	02/01/06	PEI MB
2	REVISED PER E064534	10/17/06	REJH MB
3	REVISED PER E070923	05/01/07	SRG EM
4	REVISED PER E080938	05/06/08	SA REJH
5	REVISED PER E101309	10/22/10	KUK AR



- NOTES:
- ASSEMBLY TO BE FREE OF NICKS.
  - WINDINGS TO BE EVENLY SPACED.
  - RoHS COMPLIANT, LEAD FREE PER CST-0001 LATEST REVISION.
  - GENERAL WORKMANSHIP STANDARDS FOR MAGNETIC COMPONENTS PER WS-0002.
  - DENOTES CRITICAL CHARACTERISTIC FOR LOT INSPECTION.
  - BOND THE MOUNT ITEM 3 IF APPLICABLE TO INDUCTOR LEADS (2 POSITIONS) USING EPOXY ITEM 7.

REF VICOR P/N 29764  
REF VICOR P/N 33206



DRAWN	DATE				
P.E.IENI	11/04/05				
UNLESS OTHERWISE SPECIFIED DIMENSIONS ARE INCH [MM] TOLERANCES ARE: DECIMALS      ANGLES X.XX [X.X] = ±0.01 [0.25]      ±1° X.XXX [X.XX] = ±0.005 [0.127]		<b>ASSY DWG</b> <b>IND TOR .98 DIA 1W</b>			
MATERIAL	FINISH				SIZE
	THIRD ANGLE PROJECTION	<b>B</b>	<b>67131</b>	<b>32065</b>	<b>5</b>
 DO NOT SCALE DRAWING		SCALE 4 : 1		SHEET 1 OF 1	

TEST	2	PRI	20	14.7-22.1	8 MAX
	ITEM NO.	WINDING	NO. OF TURNS	IND.(uH)	DC RES (mΩ)
1 KHz @ 10 mV					

8

7

6

5

4

3

2

1