

8

7

6

5

4

3

2

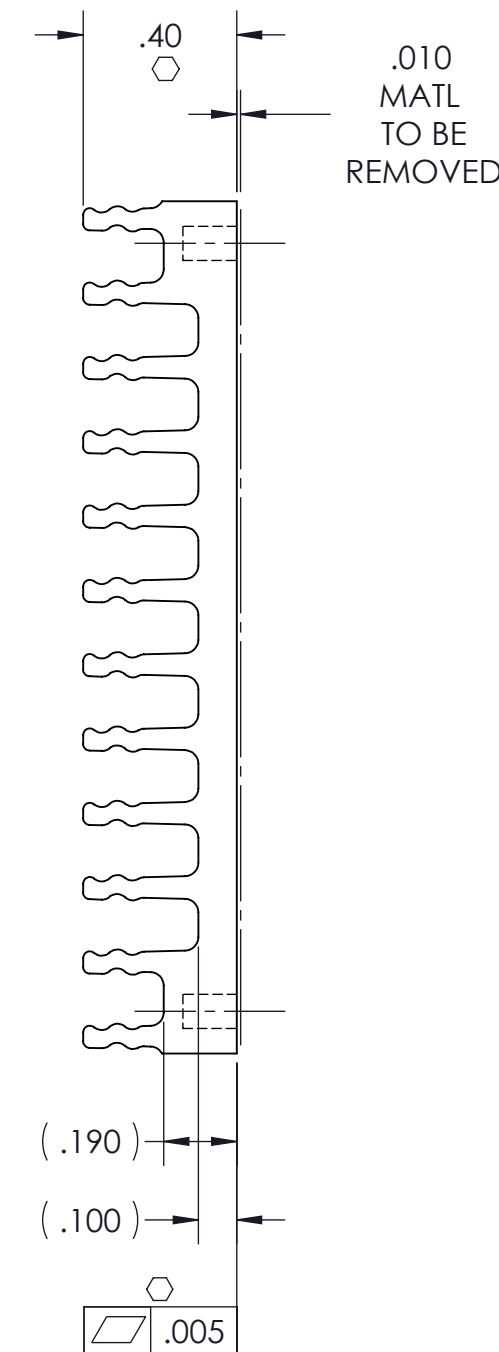
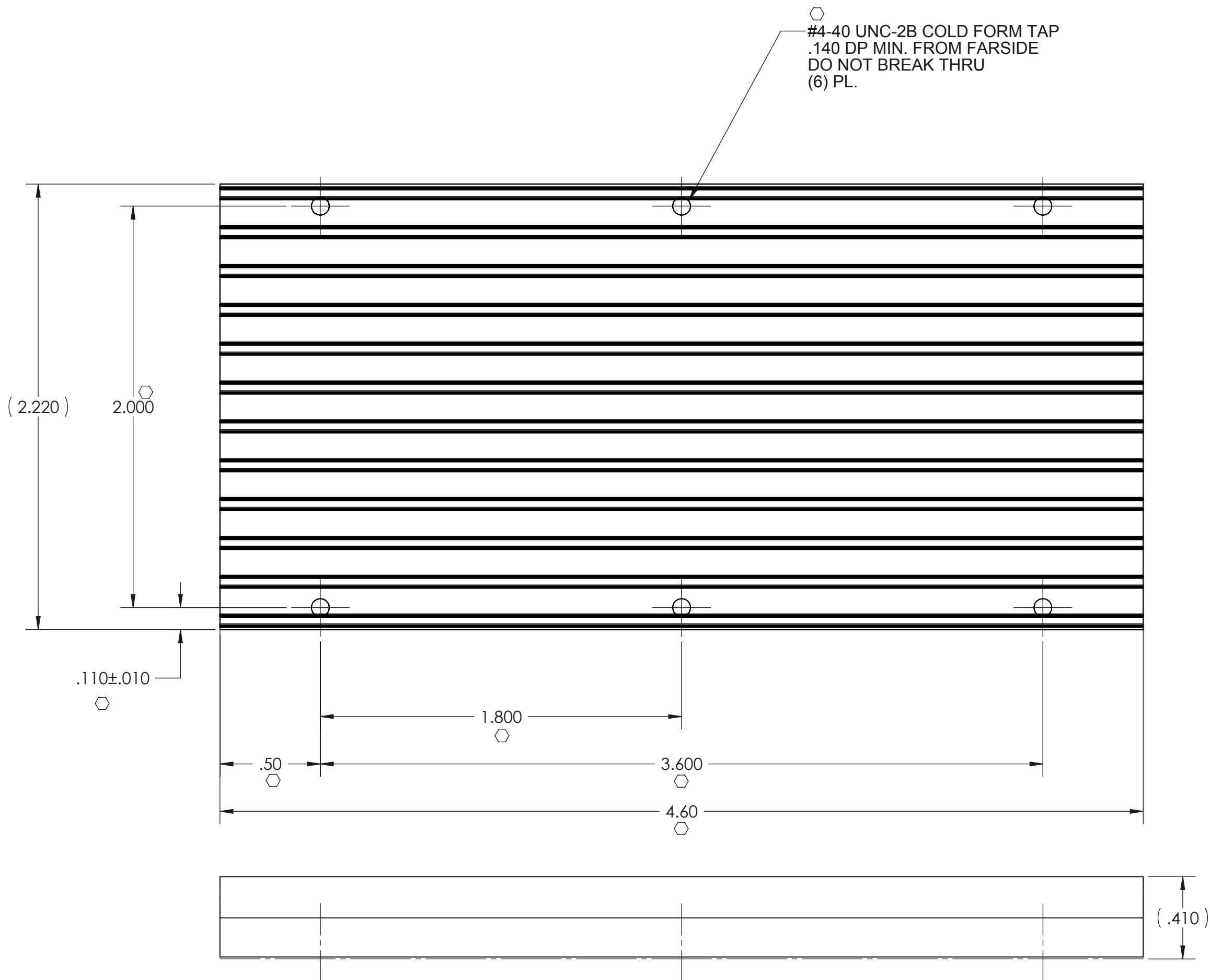
1

VICOR CONFIDENTIAL

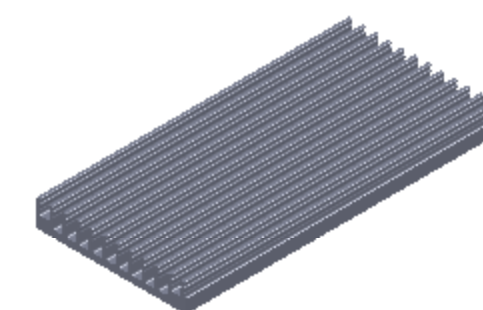
THIS DOCUMENT AND THE DATA DISCLOSED HEREIN OR HEREWITH IS NOT TO BE REPRODUCED, USED OR DISCLOSED IN WHOLE OR IN PART TO ANYONE WITHOUT THE PERMISSION OF VICOR CORP.

REVISIONS

REV	DESCRIPTION	DATE	APPROVED
1	RELEASED PER E053463	LEK 11/29/05	EF
2	REVISED PER E091085	AR 07/14/09	REJH
3	REDRAWN PER E100871	DCS 6/15/10	KUK



- NOTES:
- MATERIAL: EXTRUSION SEE SHEET 2 OF 2.
 - REMOVE ALL BURRS AND SHARP EDGES.
 - CLEAR FINISH, RoHS COMPLIANT, CHROMIUM FREE PER CST-0001 LATEST REVISION.
 - "○" DENOTES CRITICAL CHARACTERISTIC FOR LOT INSPECTION.
 - DIMENSIONS ARE INCHES ONLY



DRAWN	DATE				
KNIGHT	09/20/06				
MATERIAL	UNLESS OTHERWISE SPECIFIED DIMENSIONS ARE INCH [MM]	HTSNK 'A' LONG .4H LOW FLOW, THREADED			
SEE NOTES	TOLERANCES ARE: DECIMALS ANGLES X.XX [X.X] = ±0.01 [0.25] ±1° X.XXX [X.XX] = ±0.005 [0.127]				
FINISH	THIRD ANGLE PROJECTION				
SEE NOTES	DO NOT SCALE DRAWING	SIZE	CAGE CODE	DWG NO	REV
		C	67131	30482	3
		SCALE 2 : 1		SHEET 1 OF 2	

8

7

6

5

4

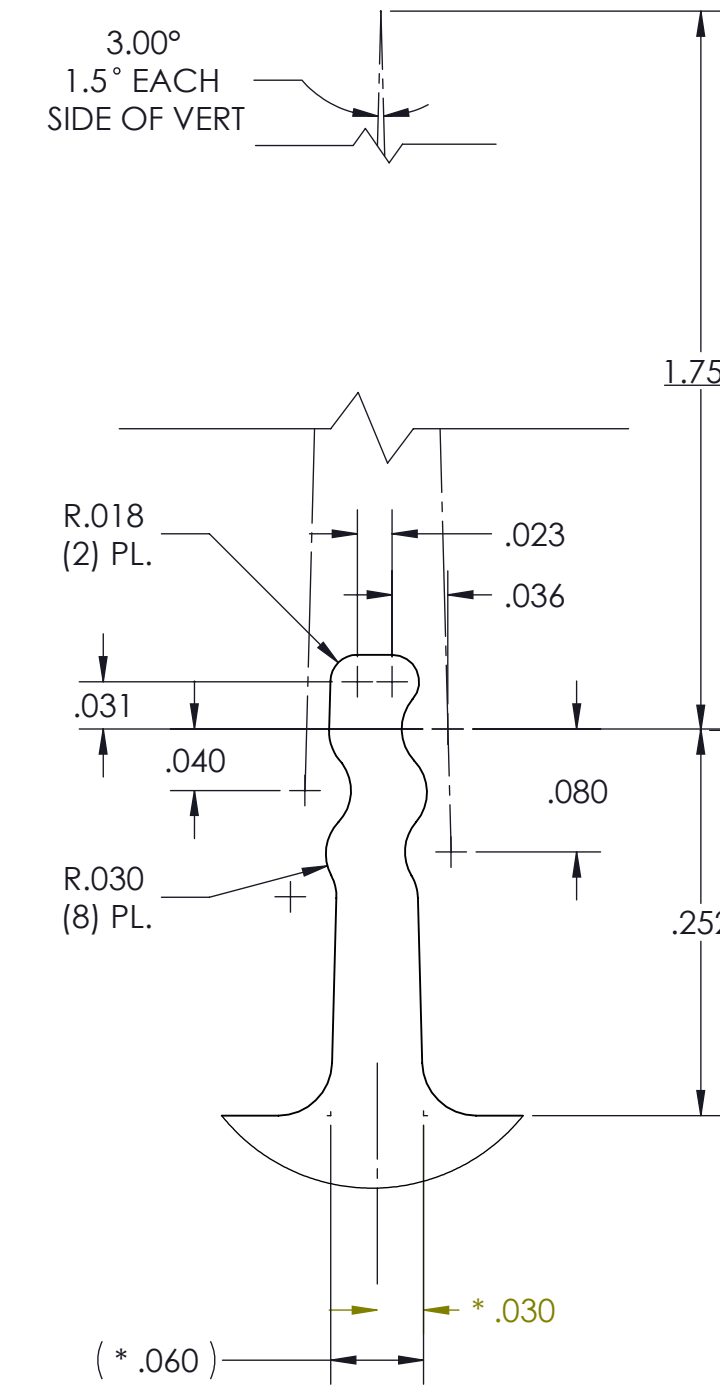
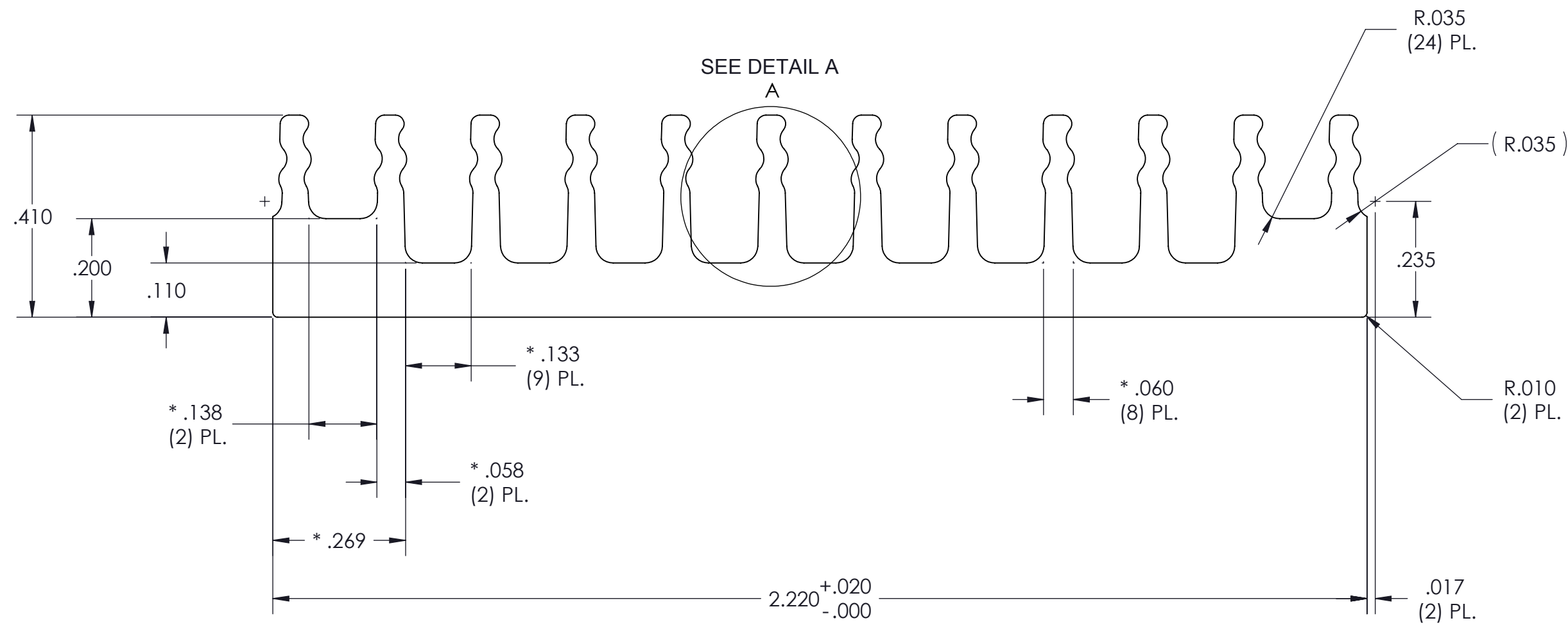
3

2

1

THIS DOCUMENT AND THE DATA DISCLOSED HEREIN OR HEREWITH IS NOT TO BE REPRODUCED, USED OR DISCLOSED IN WHOLE OR IN PART TO ANYONE WITHOUT THE PERMISSION OF VICOR CORP.

REV	DESCRIPTION	DATE	APPROVED
	SEE SHEET 1 OF 2		



DETAIL A
SCALE 8 : 1

- NOTES:
1. MATL: ALUMINUM 6063-T5
 2. * DENOTES DIMENSION TO THEORETICAL SHARP CORNER.
 3. ALL DIMENSIONS ARE CRITICAL CHARACTERISTICS
 4. RoHS COMPLIANT PER CST-0001 LATEST REVISION.
 5. DIMENSIONS ARE INCHES ONLY

PROFILE COMMON FOR
30195
30718
32188
30482

DRAWN A. RAGIPANI	DATE 07/14/09	SWD			
MATERIAL SEE NOTES	UNLESS OTHERWISE SPECIFIED DIMENSIONS ARE INCH [MM] TOLERANCES ARE: DECIMALS ANGLES X.XX [X.XX] = ±0.01 [0.25] ±1° X.XXX [X.XXX] = ±0.005 [0.127]	HTSNK 'A' LONG .4H, LOW FLOW, THREADED, EXTRUSION			
FINISH SEE NOTES	THIRD ANGLE PROJECTION 	SIZE C	CAGE CODE 67131	DWG NO 30482	REV 3
		SCALE 4 : 1		SHEET 2 OF 2	