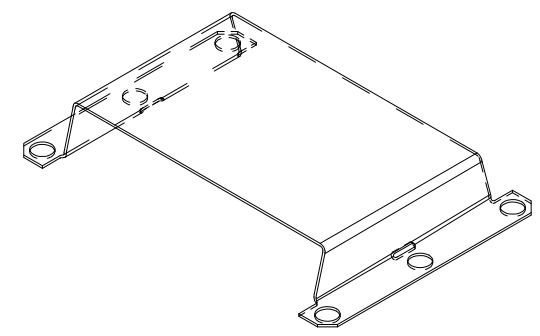
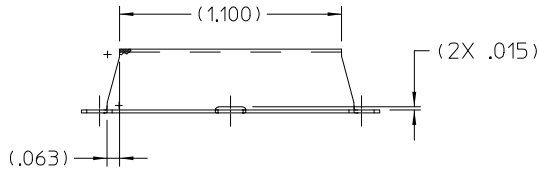
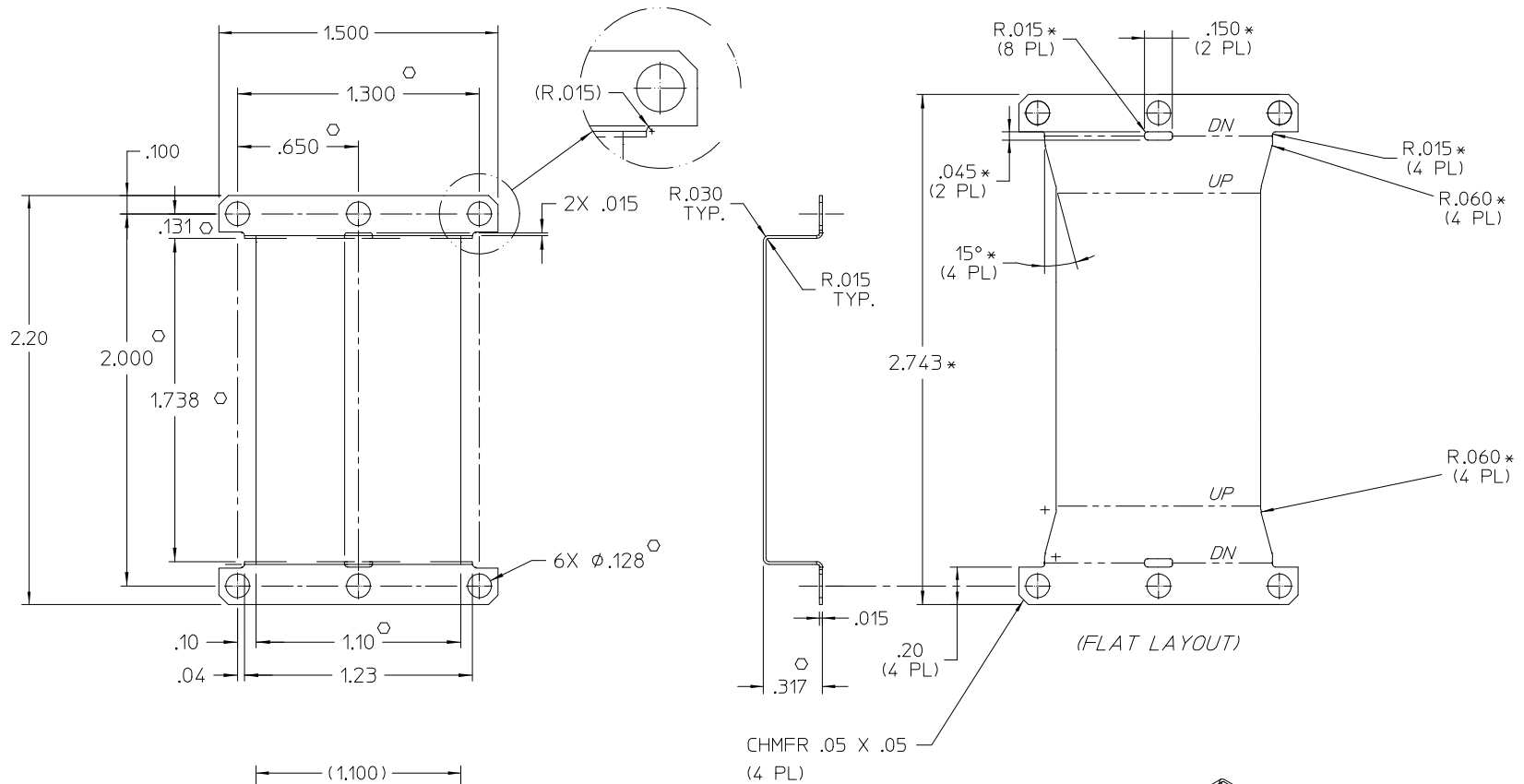


THIS DOCUMENT AND THE DATA DISCLOSED HEREIN OR HEREWITH IS NOT TO BE REPRODUCED, USED, OR DISCLOSED IN WHOLE OR IN PART TO ANYONE WITHOUT PERMISSION OF VICOR CORP.

REV.	DESCRIPTION	DATE	APPROVED
1	RELEASED PER E050312	LEK 10/18/05	SH
2	REVISED PER E160690	GCK 08/02/16	MTB



NOTES:

1. MATERIAL: ALUMINUM-(.015) THK, 3003-H14
2. REMOVE BURRS & SHARP EDGES
3. "*" DIMENSIONS ARE NOT FOR VICOR INSPECTION."
4. O DENOTES CRITICAL CHARACTERISTICS FOR LOT INSPECTION.
5. CLEAR FINISH, ROHS COMPLIANT PER CST-0001 LATEST REVISION.
 - A.) CHROMIUM FREE, OR
 - B.) TRIVALENT CHROMIUM IN ACCORDANCE WITH ML-DTL-5541, TYPE II, CLASS 1A OR 3. SEE CST-0003 FOR TYPES OF AVAILABLE FINISHES.

DRAWN BY	DATE	VICOR	
P.E.IENI	06/27/05	SHIELD BASE PLATE (MINI)	
UNLESS OTHERWISE SPECIFIED DIMENSIONS ARE IN INCHES - TOLERANCES ARE:			
FRACTIONS	DECIMALS	ANGLES	
+1/64	.XX+ .01	*1°	
	.XXX+.005		
THIRD ANGLE PROJECTION	SIZE	FSCM NO.	DWG NO.
	C	67131	30180
DO NOT SCALE DRAWING	SCALE	2X	SHEET 1 OF 1
			REV 2