

8

7

6

5

4

3

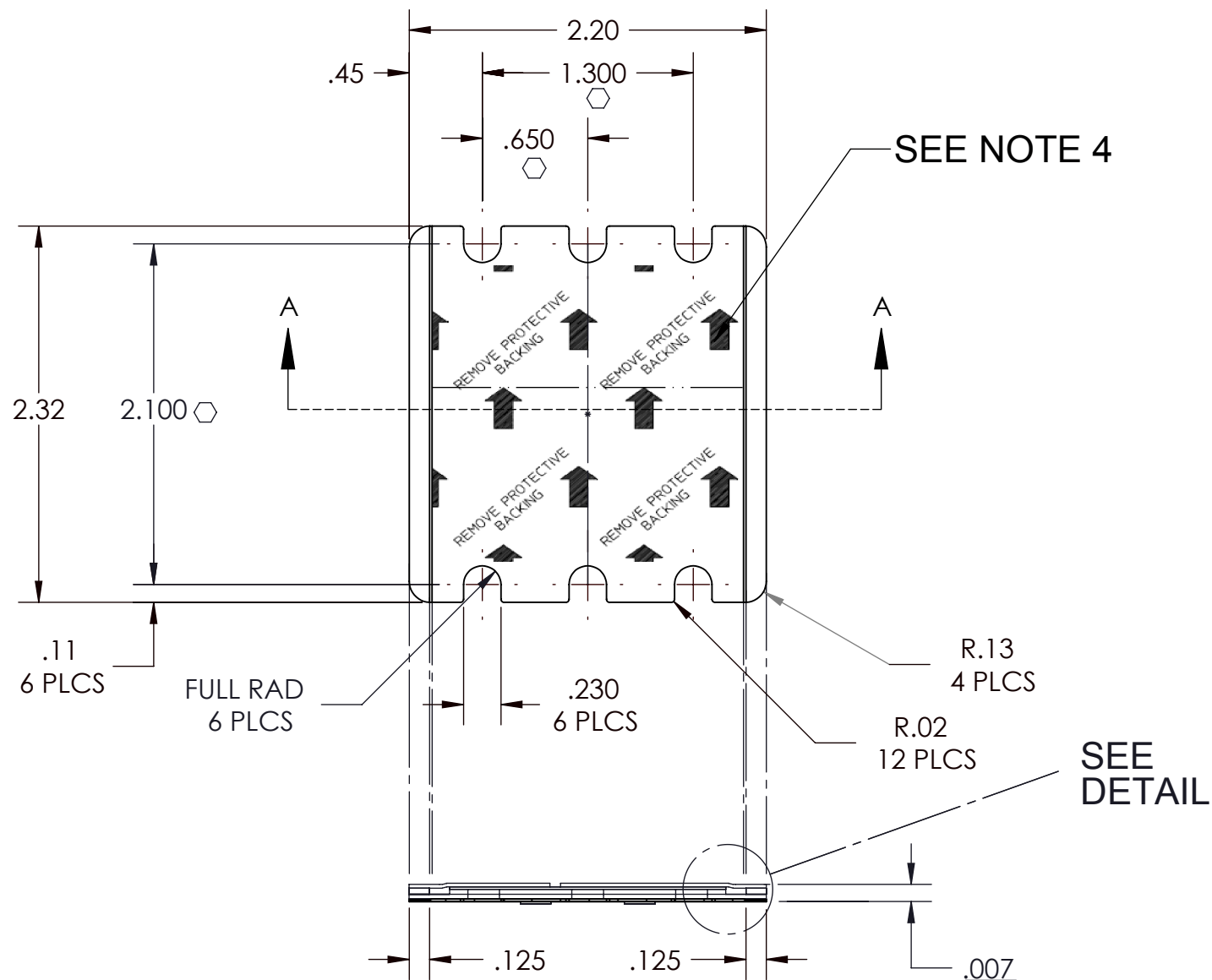
2

1

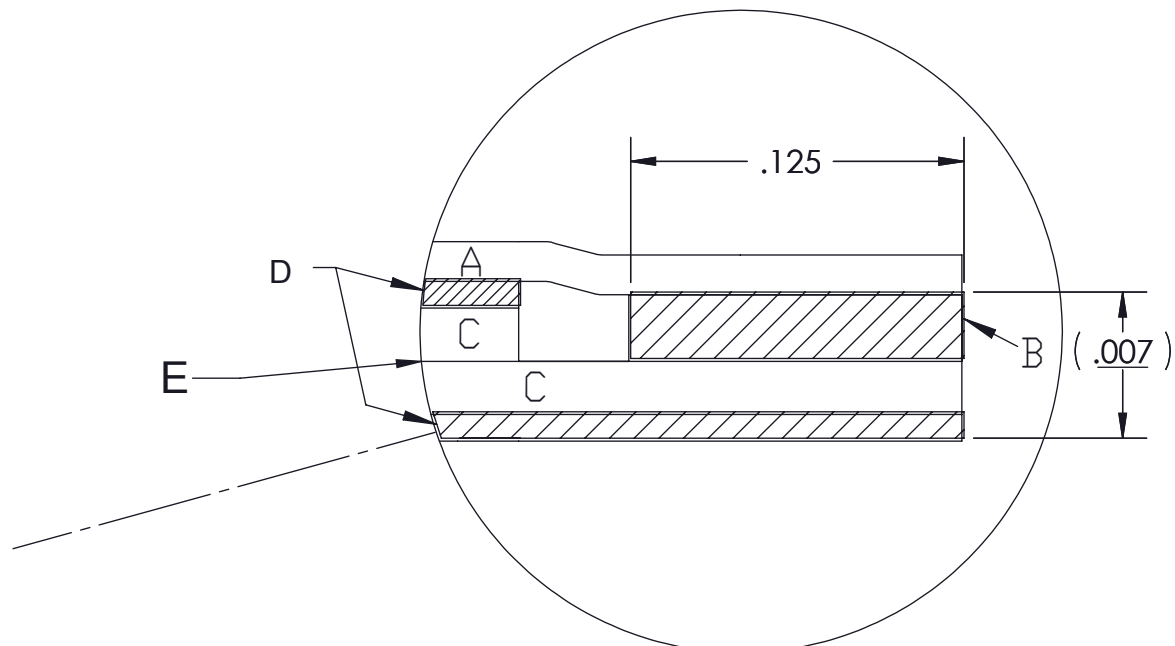
VICOR CONFIDENTIAL

THIS DOCUMENT AND THE DATA DISCLOSED HEREIN OR HEREWITH IS NOT TO BE REPRODUCED, USED OR DISCLOSED IN WHOLE OR IN PART TO ANYONE WITHOUT THE PERMISSION OF VICOR CORP.

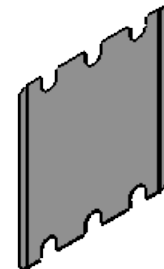
REV.	DESCRIPTION	INTL	DATE	APVD
1	REVISED PER E091595a	JS	09/10/09	REJH
2	REVISED PER E101310b	KUK	10/22/10	AR
3	REVISED PER E170323a	YG	04/03/17	REJH
4	REVISED PER E180886	AY	01/10/19	RLT



SECTION A-A
(VERTICAL THICKNESS IS NOT SHOWN TO SCALE)

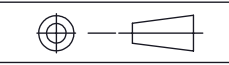


DETAIL :
 A. SPLIT RELEASE LINER.
 B. ADHESIVE STRIP; .0025 THICK .125 WIDE.
 C. ALUMINUM ALLOY 1145-0; .002 THICK.
 D. PHASE CHANGE THERMAL COMPOUND; .001 THICK.
 E. PHASE CHANGE THERMAL COMPOUND; .0005 THICK



NOTES:

- 1. MATERIAL: MAKE FROM HENKEL AL-2-22H-232
- 2. THICKNESS: .007±.001.
- 3. SEE DETAIL FOR ASSY ORDER.
- 4. FOR ARTWORK SHOWN HERE SEE DWG# 20200.
- 5. ◊ DENOTE CRITICAL CHARACTERISTIC FOR LOT INSPECTION.
- 6. RoHS COMPLIANT PER CST-0001 LATEST REVISION.
- 7. PRIOR TO ASSEMBLY, PRODUCTS SHALL BE STORED IN A COOL, DRY LOCATION IN ORIGINAL PACKAGING AT TEMPERATURES BELOW 40±C (104±F). UNDER THESE CONDITIONS THE SHELF LIFE IS INDEFINITE. THERMMATE PADS CAN BE PRE-APPLIED TO BASEPLATES OR HEAT SINKS WHICH ARE THEN SHIPPED TO A FINAL ASSEMBLY LOCATION, AS LONG AS THE TEMPERATURE DOES NOT EXCEED THE LEVEL INDICATED ABOVE.

DRAWN BY	DATE	VICOR swd			
RCM	8/20/98	THERMAL INTFC PAD, TMATE VI-J00			
UNLESS OTHERWISE SPECIFIED DIMENSIONS ARE : INCH / [MM]					
TOLERANCES ARE: DECIMALS ANGLES X.XX [X.X] = ±0.01 [0.25] ±1° X.XXX [X.XX] = ±0.005 [0.127]		SIZE	CAGE CODE	DWG NO	REV
THIRD ANGLE PROJECTION  DO NOT SCALE DRAWING		B	67131	19458	4
		SCALE 1:1	SHEET 1 OF 1		