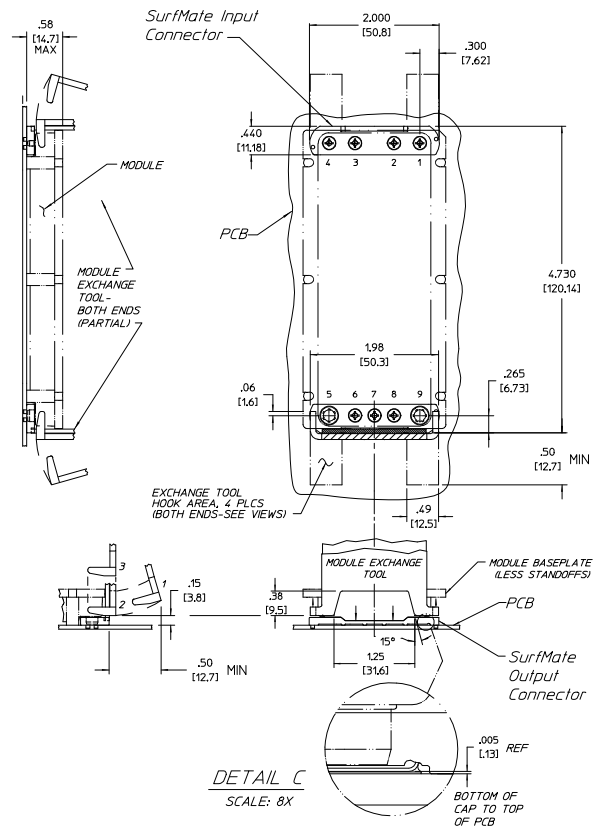
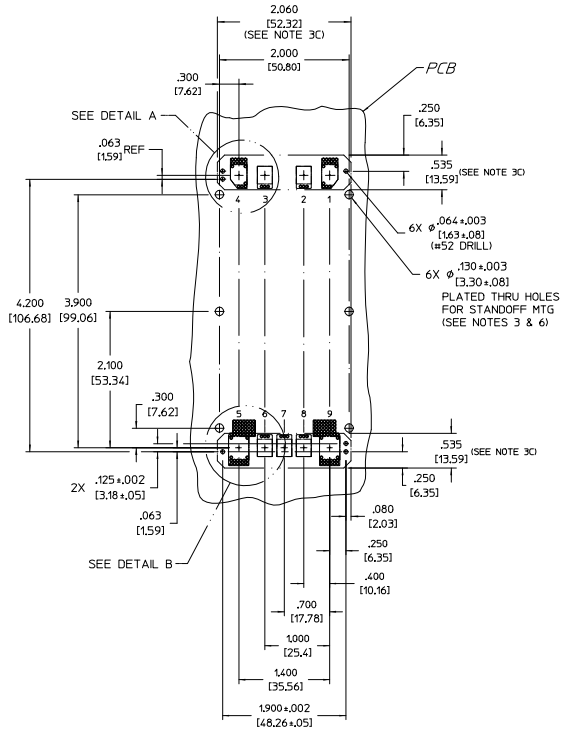
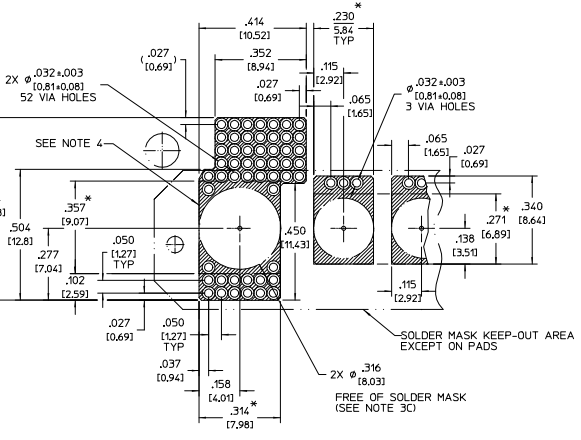
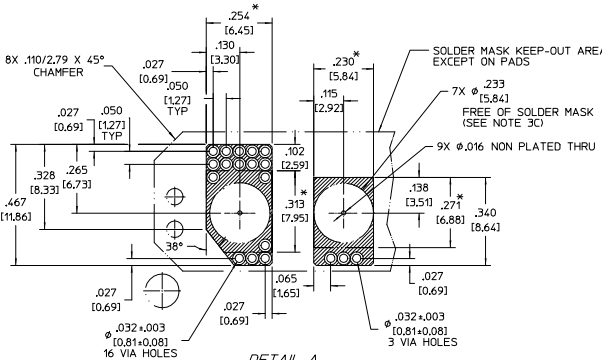


THIS DOCUMENT AND THE DATA DISCLOSED HEREIN OR HEREWITH IS NOT TO BE REPRODUCED, USED, OR DISCLOSED IN WHOLE OR IN PART TO ANYONE WITHOUT PERMISSION OF VICOR CORP.

REV.	DESCRIPTION	DATE	APPRO	
01	RELEASED PER E0220210	GCK	6/7/02	PEI
2	REVISED PER E0220494	PEI	10/9/02	JMR
3	REVISED PER E043116	AK	05/23/06	BH
4	REVISED PER E043318	GCK	9/22/06	REH



- NOTES:
- MATERIAL:
HEADERS: VECTRA E150L LIQUID CRYSTAL POLYMER, 50% GLASS FILLED, BLACK COLOR
SOCKET CAP: 260 CARTRIDGE BRASS, Au PLATED
SOCKETS: Be-Cu ALLOY #25, Au PLATED
 - DIMENSIONS AND VALUES IN BRACKETS ARE METRIC.
A. PCBs: DIMENSIONS AND TOLERANCES PER ANSI/IPC-D-300, FOR CLASS 'B' BOARDS.
B. REFER TO TOLERANCE BLOCK FOR OTHER TOLERANCES.
 - RECOMMENDED PCB CONSTRUCTION:
A. MULTILAYER 3 OZ COPPER WITH INTERNAL POWER AND GROUND PLANES.
B. PAD GEOMETRY AND MINIMUM NUMBER OF VIA HOLES SHOWN FOR CONNECTION TO INTERNAL PLANES.
C. PADS TO BE COVERED WITH SOLDER MASK EXCEPT IN AREA SHOWN IN DETAILS A & B. FINAL PAD HEIGHT ABOVE LAMINATE TO BE .004 +/- .0004.
 - STENCIL APERTURE SHOWN IN HEAVY LINE, SEE DIMENSIONS MARKED WITH *.
SOLDER PASTE STENCIL THICKNESS:
MINIMUM .006"
RECOMMENDED .008 TO .012"
 - DURING SOLDERING, SURFMATE PART TEMPERATURES NOT TO EXCEED 455°F (235°C).
 - MODULE MOUNTING STANDOFF KITS REQUIRED.
 - MODULE EXCHANGE TOOL (VICOR PN 22827) REQUIRED FOR MODULE REMOVAL.

PIN NO.	SYMBOL	FUNCTION	PIN DIA.
1	+	+IN	.080 [2.03]
2	PC	PRIM CONTROL	.080 [2.03]
3	PR	PARALLEL	.080 [2.03]
4	-	-IN	.080 [2.03]
5	-	-OUT	.180 [4.57]
6	-S	-SENSE	.080 [2.03]
7	SC	SEC CONTROL	.080 [2.03]
8	+S	+ SENSE	.080 [2.03]
9	+	+ OUT	.180 [4.57]

DRAWN BY RDF	DATE 4/23/97			
UNLESS OTHERWISE SPECIFIED DIMENSIONS ARE IN INCHES TOLERANCES ARE: (SEE NOTE 2) .XXX - .001 (0.025) ±.001 .XXX - .002 (0.052) ±.001				
THRD ANGLE PROJECTION 		SIZE D 67131	PSCN NO. 16809	DWS NO. 4
DO NOT SCALE DRAWING		SCALE FULL	SHEET 1	OF 1

APPS DWG, PCB SURF. MT CONN
SURFMATE VI-900