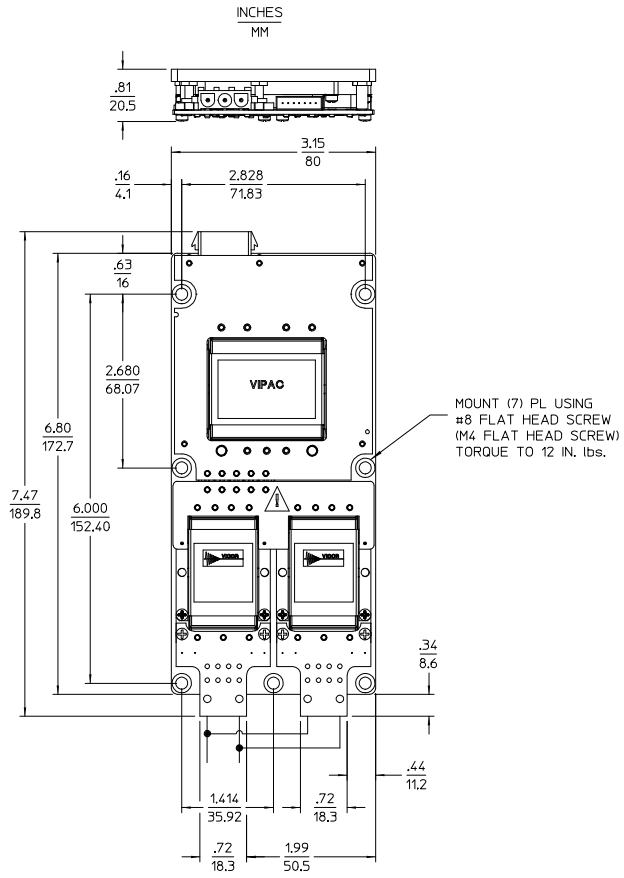


REV.	DESCRIPTION	DATE	APVD
SEE SHEET 1			

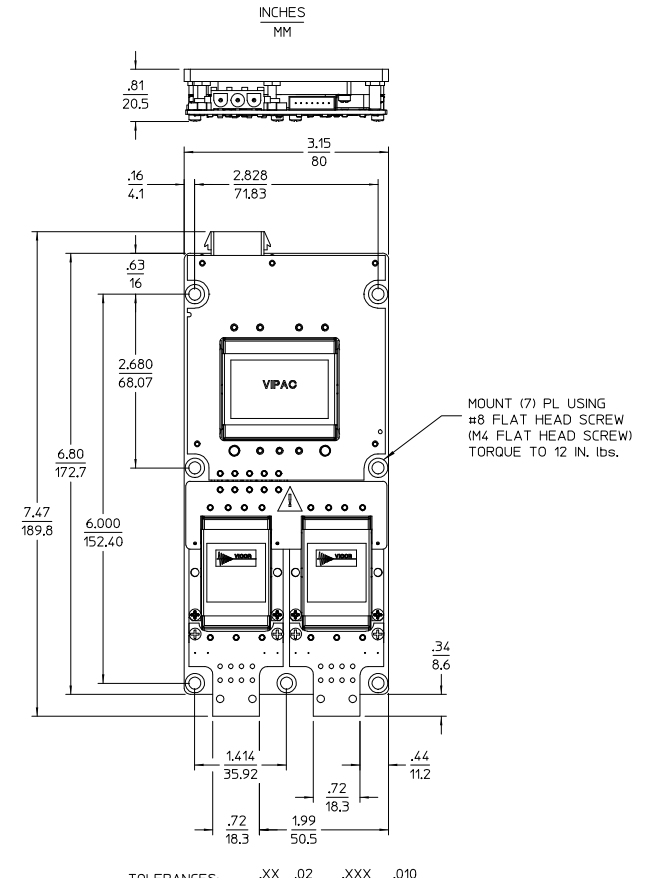
CONFIGURATION 'D'
COLDPLATE VERSION SHOWN
SINGLE OUTPUT
WITH PLUGMATES



CUSTOMER MUST WIRE OUTPUTS OF CONVERTERS IN PARALLEL AS SHOWN. REFER TO DATA SHEET FOR DETAILS.

TOLERANCES: $\frac{.XX}{MM} = \frac{.02}{.5}$ $\frac{.XXX}{MM} = \frac{.010}{.25}$

CONFIGURATION 'D'
COLDPLATE VERSION SHOWN
DUAL OUTPUT
WITH PLUGMATES



TOLERANCES: $\frac{.XX}{MM} = \frac{.02}{.5}$ $\frac{.XXX}{MM} = \frac{.010}{.25}$

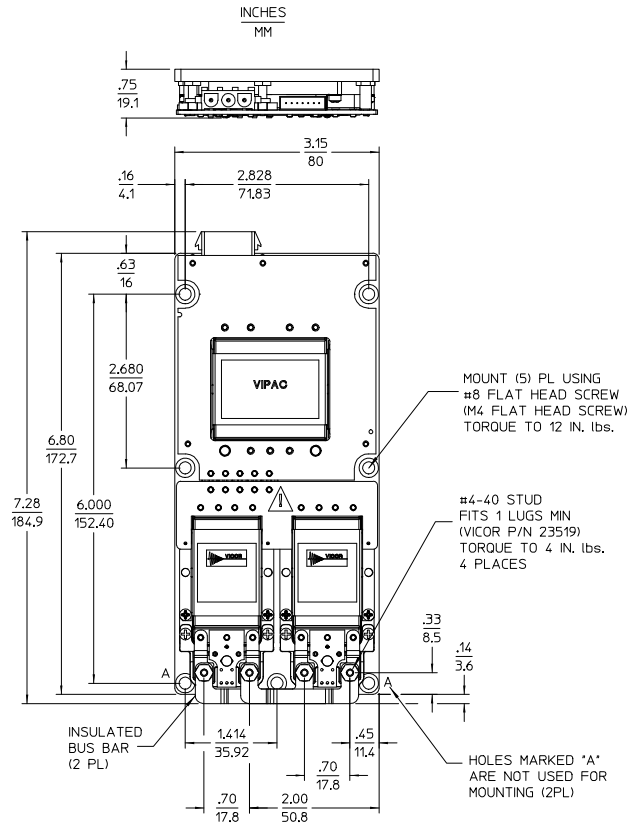
DRAWN BY A. RYAN	DATE 02/05/01				
<small>UNLESS OTHERWISE SPECIFIED DIMENSIONS ARE IN INCHES TOLERANCES ARE: FRACTIONS DECIMALS ANGLES .XX .01 .1° .XXX .005 .1°</small>					
THIRD ANGLE PROJECTION		SIZE D	P/SCH NO. 67131	DWG NO. 21320	REV #6
DO NOT SCALE DRAWING		SCALE 1:1	SHEET 2		OF 2

THIS DOCUMENT AND THE DATA DISCLOSED HEREIN OR HEREWITH IS NOT TO BE REPRODUCED, USED, OR DISCLOSED IN WHOLE OR IN PART TO ANYONE WITHOUT PERMISSION OF VICOR CORP.

REV.	DESCRIPTION	DATE	APVD
#1	DRAWN FOR DEVELOPMENT	AK 02/05/01	TR
#2	REVSD PER MRKUP	AK 07/31/01	GCK
#3	REVSD PER MRKUP	AK 12/05/01	GCK
#4	ADDED SHEETS 2 AND 3	AK 11/09/02	CFH
#5	ADDED WIRE OUTPUTS	DPK 03/12/03	AK
#6	REVSD PER MRKUP	AK 05/05/05	GCK

CONFIGURATION 'D'

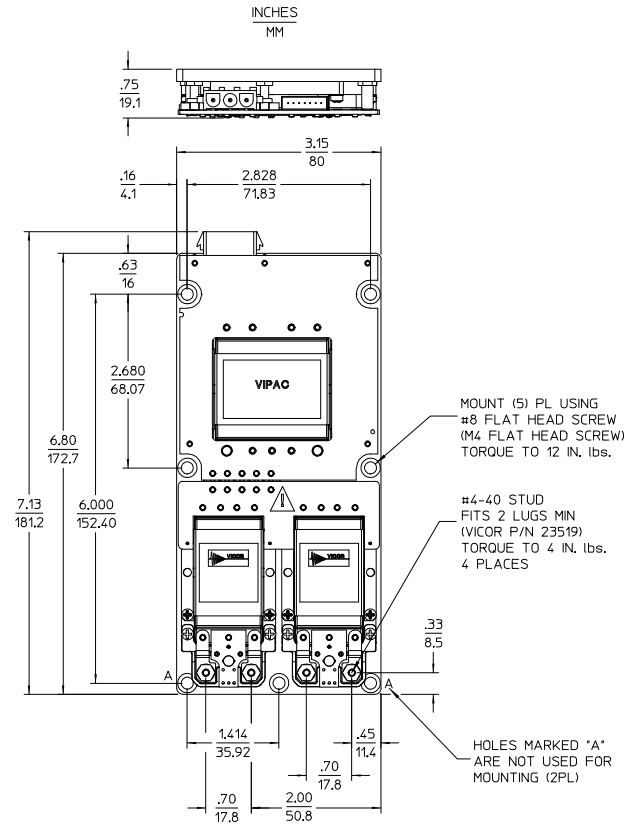
COLDPLATE VERSION SHOWN
SINGLE OUTPUT
WITH LUGMATES



TOLERANCES: $\frac{.XX}{MM} = \frac{-.02}{.5}$ $\frac{.XXX}{MM} = \frac{.010}{.25}$

CONFIGURATION 'D'

COLDPLATE VERSION SHOWN
DUAL OUTPUT
WITH LUGMATES



TOLERANCES: $\frac{.XX}{MM} = \frac{-.02}{.5}$ $\frac{.XXX}{MM} = \frac{.010}{.25}$

<small>DRAWN BY A. RIZMAR</small> <small>UNLESS OTHERWISE SPECIFIED DIMENSIONS ARE IN INCHES TOLERANCES ARE: FRACTIONS DECIMALS ANGLES +ve/- .01 .01 .1° X.XX .005 .005</small>	<small>DATE 02/05/01</small>
<small>THIRD ANGLE PROJECTION</small> 	<small>SCALE</small> 1:1
<small>SIZE</small> D	<small>P/SCH NO.</small> 67131
<small>DWG NO.</small> 21320	<small>REV</small> #6
<small>SHEET</small> 1	<small>OF</small> 2

OUTLINE DRAWING
VIPAC CONFIG 'D' (DC)