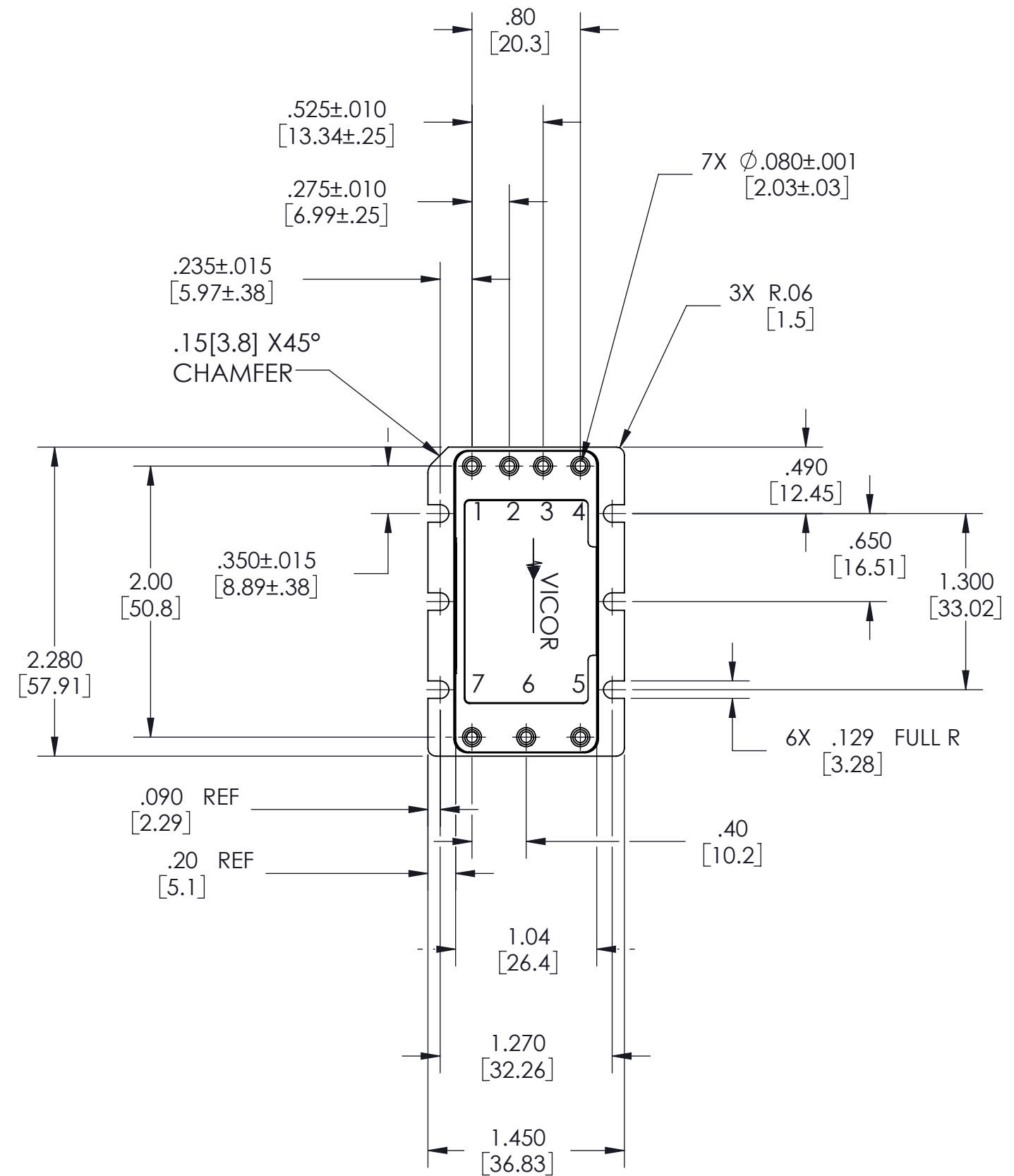
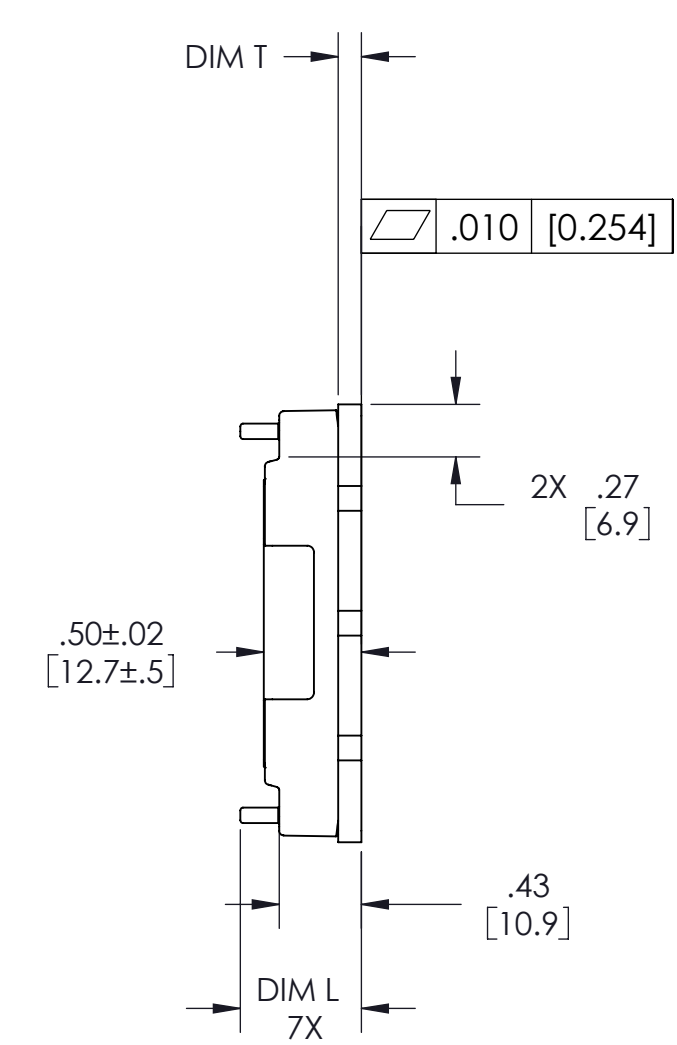


THIS DOCUMENT AND THE DATA DISCLOSED HEREIN OR HEREWITH IS NOT TO BE REPRODUCED, USED OR DISCLOSED IN WHOLE OR IN PART TO ANYONE WITHOUT THE PERMISSION OF VICOR CORP.

REV	DESCRIPTION	DATE	APPROVED
1	RELEASE PER E110024a	AR 01/11/11	KUK

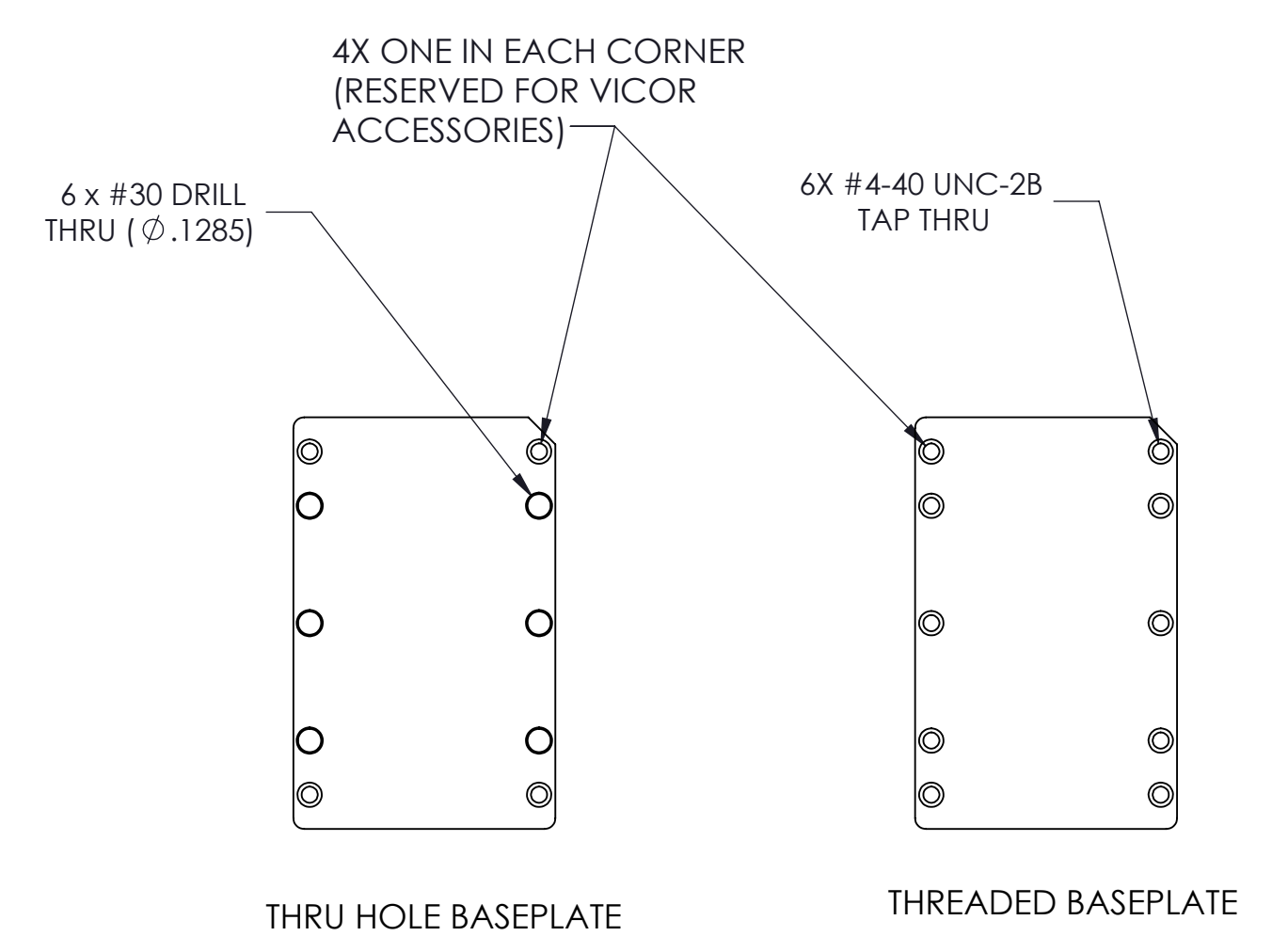


DIMENSION T
 SLOTTED.....0.12[3.1]
 THRU & THREADED...0.20[5.1]



DIMENSION L
 PIN SHORT...0.55±.015 [14.0±.38]
 PIN LONG....0.63±.015 [16.0±.38]

SLOTTED BASEPLATE
 DIMENSIONS FOR ALL MODULE TYPES
 ARE SHOWN ABOVE; VERSIONS AT RIGHT
 SHOW DIMENSIONS THAT VARY.



NOTES:
 1. MATERIAL:
 BASE: 6000 SERIES ALUMINUM
 PINS: ROHS PINS GOLD PLATE 30 MICRO INCH MIN;
 NON-ROHS PINS TIN/LEAD 90/10 BRIGHT.



DRAWN	DATE				
KRISHNA	12/20/2010				
MATERIAL	UNLESS OTHERWISE SPECIFIED DIMENSIONS ARE INCH [MM] TOLERANCES ARE: DECIMALS ANGLES X.XX [X.X] = ±0.01 [0.25] ±1° X.XXX [X.XX] = ±0.005 [0.127]		OUTLN DWG FAST TRACK MC PLASTIC		
FINISH	THIRD ANGLE PROJECTION	SIZE			CAGE CODE
		C	67131	37207	REV 1
		SCALE 1 : 1		SHEET 1 OF 1	