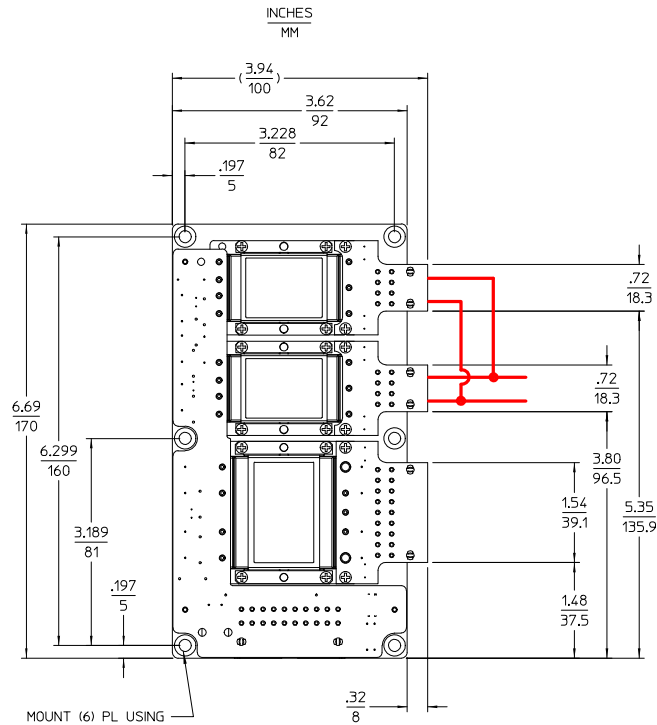


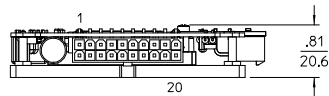
REV.	DESCRIPTION	DATE	APVD
SEE SHEET 1			

### CONFIGURATION 'B'

DUAL OUTPUT  
WITH PLUGMATES



MOUNT (6) PL USING  
#8 FLAT HEAD SCREW  
(M4 FLAT HEAD SCREW)  
TORQUE TO 12 in. lbs.

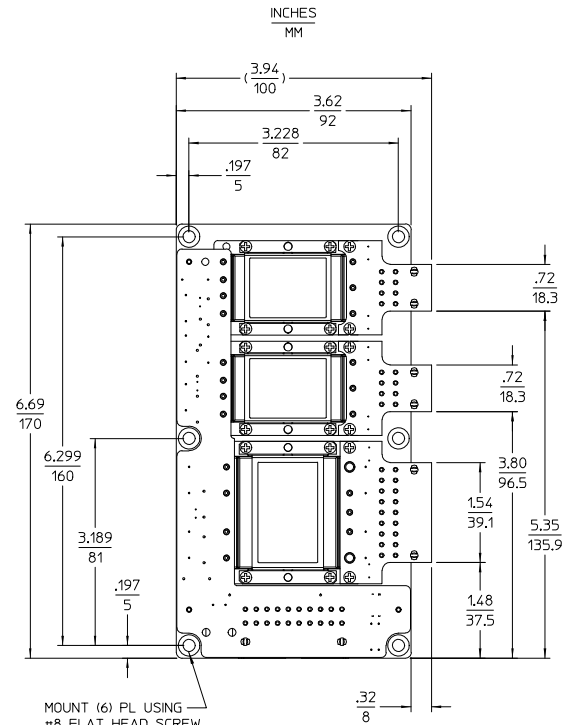


CUSTOMER MUST WIRE OUTPUTS OF  
CONVERTERS IN PARALLEL AS SHOWN  
REFER TO DATA SHEET FOR DETAILS

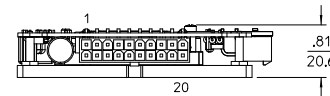
TOLERANCES: .XX = .02    .XXX = .010  
MM    .5        MM    .25

### CONFIGURATION 'B'

TRIPLE OUTPUT  
WITH PLUGMATES



MOUNT (6) PL USING  
#8 FLAT HEAD SCREW  
(M4 FLAT HEAD SCREW)  
TORQUE TO 12 in. lbs.



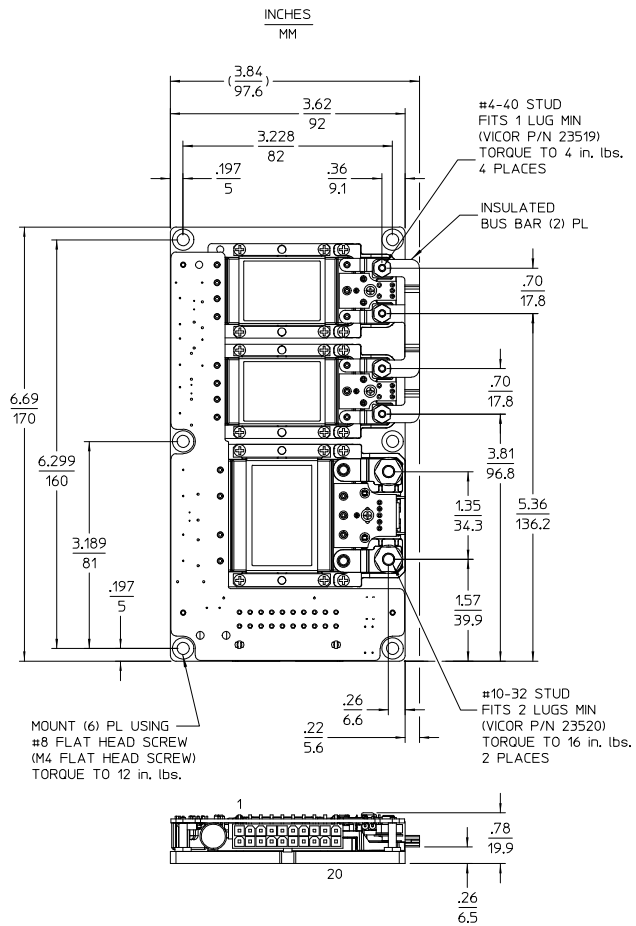
TOLERANCES: .XX = .02    .XXX = .010  
MM    .5        MM    .25

DRAWN BY A. KOTLAR	DATE 09/12/02			
<small>UNLESS OTHERWISE SPECIFIED DIMENSIONS ARE IN INCHES TOLERANCES ARE: FRACTIONS DECIMALS ANGLES XXX +.01    .01    °10</small>				
THIRD ANGLE PROJECTION	SIZE D	PSCH NO. 67131	DWG NO. 24823	REV 2
DO NOT SCALE DRAWING	SCALE 1:1	SHEET 2 OF 2		

REV.	DESCRIPTION	DATE	APVD
1	RELEASED PER E0430434	PEI 09/20/04	FN
2	REVSD PER E053078	AK 06/20/05	FN

### CONFIGURATION 'B'

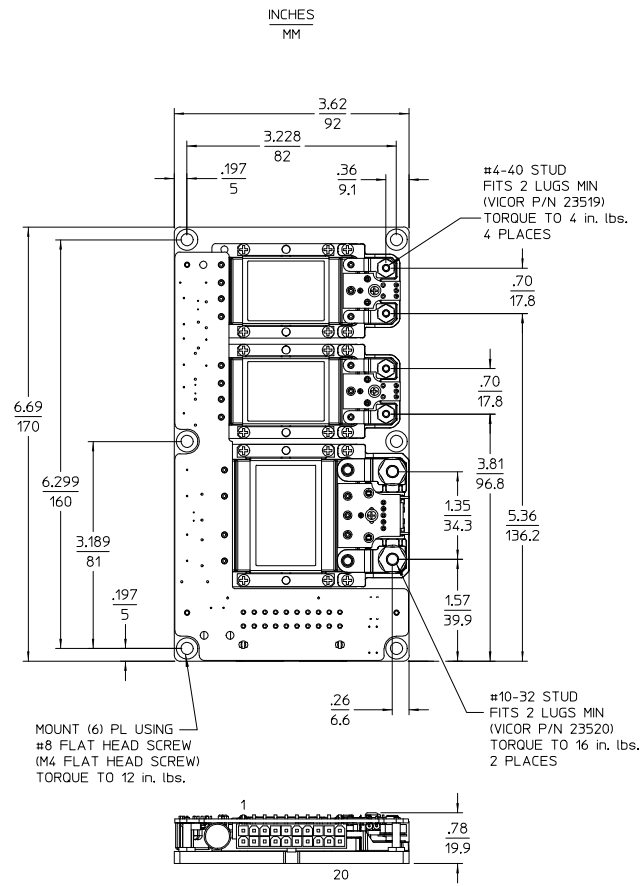
DUAL OUTPUT  
WITH LUGMATES



TOLERANCES: .XX = .02 MM .5 XXX = .010 MM .25

### CONFIGURATION 'B'

TRIPLE OUTPUT  
WITH LUGMATES



TOLERANCES: .XX = .02 MM .5 XXX = .010 MM .25

DRAWN BY A. RIZMAR	DATE 09/12/02				
UNLESS OTHERWISE SPECIFIED DIMENSIONS ARE IN INCHES TOLERANCES ARE: FRACTIONS DECIMALS ANGLES .XX .01 .015 .015 .XXX .01 .015 .015					
THIRD ANGLE PROJECTION		SIZE D	PSCH NO. 67131	DWG NO. 24823	REV 2
DO NOT SCALE DRAWING		SCALE 1:1	SHEET 1		OF 2