

8

7

6

5

4

3

2

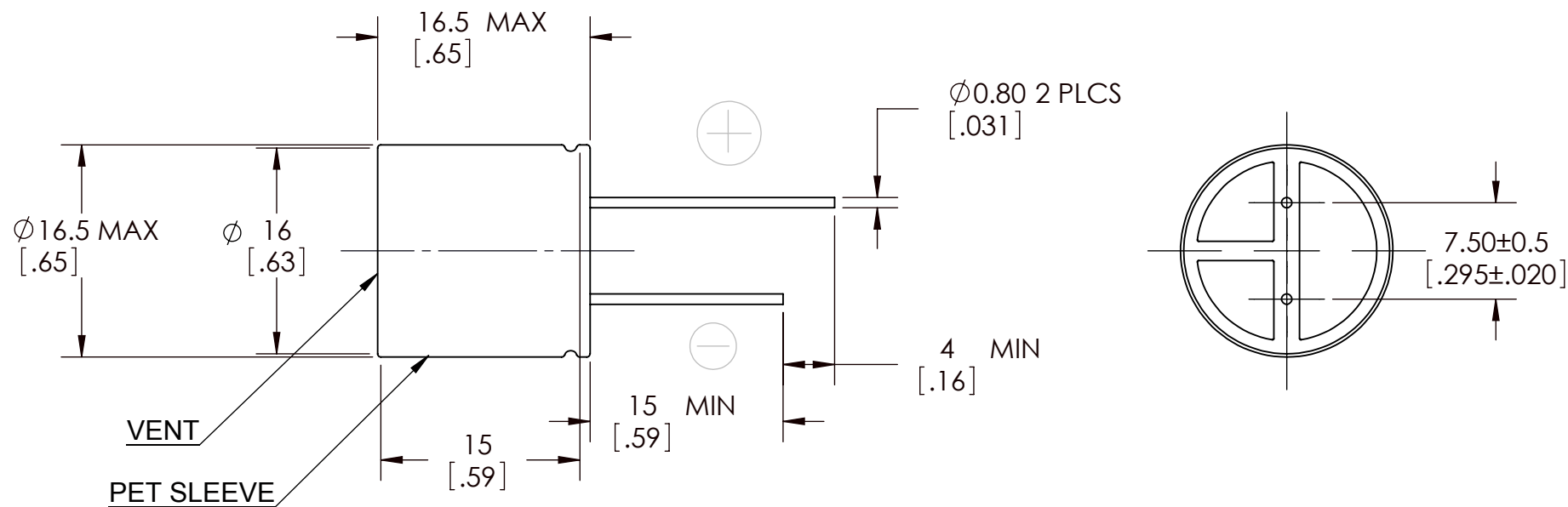
1

VICOR CONFIDENTIAL

THIS DOCUMENT AND THE DATA DISCLOSED HEREIN OR HEREWITH IS NOT TO BE REPRODUCED, USED OR DISCLOSED IN WHOLE OR IN PART TO ANYONE WITHOUT THE PERMISSION OF VICOR CORP.

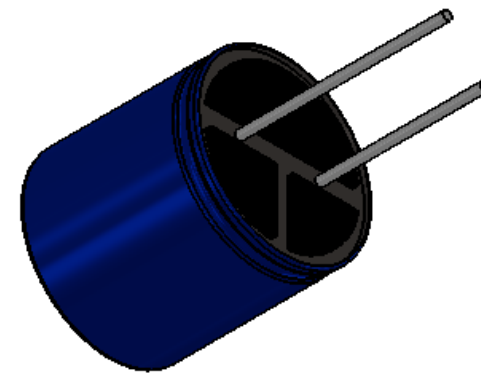
REVISIONS

REV	DESCRIPTION	DATE	APPROVED
1	RELEASED PER E060016 REJH	10/26/06	MH
2	REVISED PER ECO Request E100082 JS	01/20/10	MH
3	REVISED PER E100698A KUK	5/19/10	JG



ELECTRICAL CHARACTERISTICS @ Ta= 20°C, 120Hz (UNLESS OTHERWISE SPECIFIED)

PARAMETER	SYMBOL	MIN	MAX	UNITS	TEST CONDITIONS
CAPACITANCE	C	176	264	uF	0.5Vrms
WORKING VOLTAGE	V _{DCW}	63		V	
SURGE VOLTAGE	V _{SURGE}		79	V	
LEAKAGE CURRENT	I _{DCL}		415.8	uA	1 MINUTE
DISSIPATION FACTOR	tan		0.08		
IMPEDANCE	Z		0.15 0.41	Ω	100KHZ, 20 °C 100KHZ, -10 °C
RIPPLE CURRENT	I _{RIPPLE}		960	mA	Ta= 105°C, 100KHZ
OPERATING TEMPERATURE RANGE	T _{OP}	-55	+105	°C	



- NOTES:
 1. MATERIAL: ALUMINUM ELECTROLYTIC.
 2. RoHS COMPLIANT, LEAD FREE PER CST-0001 LATEST REVISION.

MAXIMUM PERMISSIBLE RIPPLE CURRENT

FREQUENCY MULTIPLIER

TEMPERATURE MULTIPLIER

FREQUENCY IN Hz					
50	120	300	1K	10K	100K
0.60	0.70	0.80	0.90	0.95	1.00

TEMPERATURE	85°C	105°C
MULTIPLIER	1.75	1

DRAWN	DATE			SWD	
P.E.IENI	11/28/05				
MATERIAL	UNLESS OTHERWISE SPECIFIED DIMENSIONS ARE MM [INCH] TOLERANCES ARE: DECIMALS ANGLES X.XX [X.X] = ±0.01 [0.25] ±1° X.XXX [X.XX] = ±0.005 [0.127]		CAPACITOR ALEL RADIAL 220uF 20% 63V		
FINISH	THIRD ANGLE PROJECTION	SIZE			CAGE CODE
		B	67131	30787	3
DO NOT SCALE DRAWING		SCALE 2 : 1		SHEET 1 OF 1	

8

7

6

5

4

3

2

1

F

F

E

E

D

D

C

C

B

B

A

A