

8

7

6

5

4

3

2

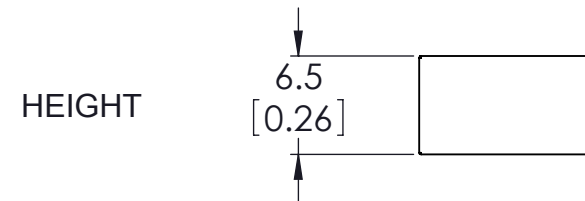
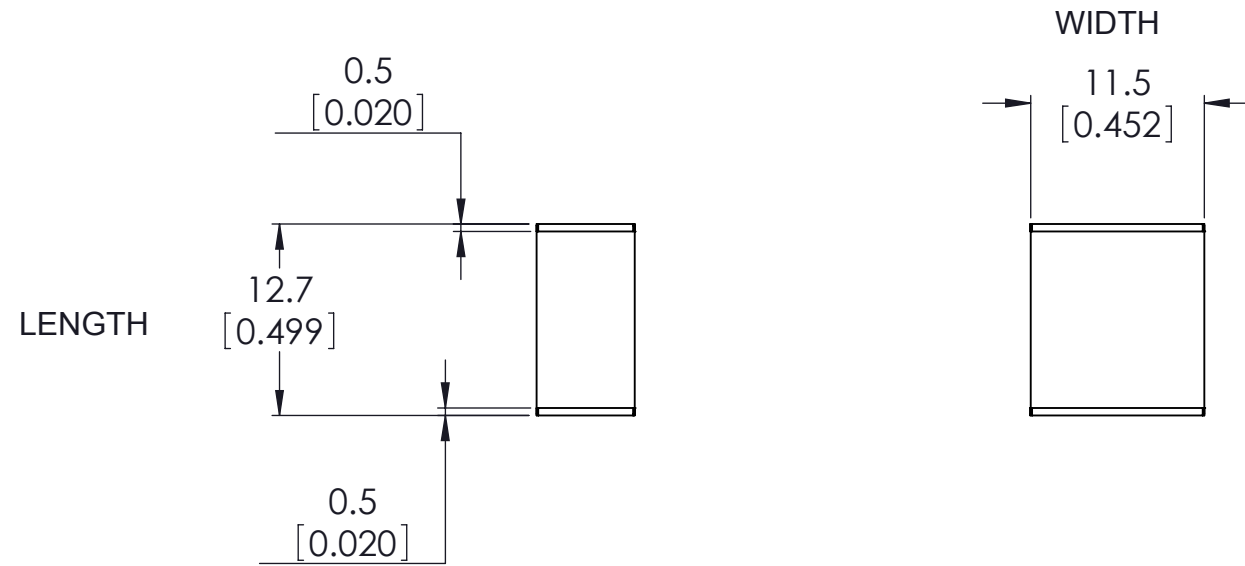
1

VICOR CONFIDENTIAL

THIS DOCUMENT AND THE DATA DISCLOSED HEREIN OR HEREWITH IS NOT TO BE REPRODUCED, USED OR DISCLOSED IN WHOLE OR IN PART TO ANYONE WITHOUT THE PERMISSION OF VICOR CORP.

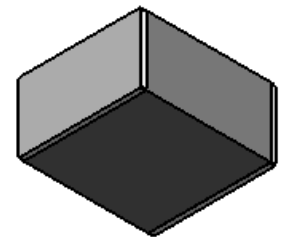
REVISIONS

REV	DESCRIPTION	DATE	APPROVED
1	RELEASE PER E100697A	5/18/10	JG



NOTES:

1. APPROVALS UL, CSA, S.
2. DIMENSIONS ARE IN MILLIMETERS/INCHES TOLERANCE ± 0.2 mm.
3. ELECTRODE TEMPERATURE, REFLOW SOLDERING. PREHEATING TEMPERATURE SHOULD BE LESS THAN 160°C. THE TIME ABOVE 180°C SHOULD BE LESS THAN 1 MINUTE. PEAK TEMPERATURE MUST NOT EXCEED 240°C.
4. RoHS COMPLIANT, LEAD FREE PER CST-0001, LATEST REVISION.



ELECTRICAL SPECIFICATIONS

RATED VOLTAGE	250 VAC
CAPACITANCE	4700 pF
CAPACITANCE TOLERANCE	$\pm 20\%$
CLASS	Y CLASS
DISSIPATION FACTOR	1.3% @ 1kHz
DIELECTRIC VOLTAGE	3000 VDC
INSULATION RESISTANCE @ 500VDC	$\geq 12000M\Omega$
TEMPERATURE RANGE	-40 TO +100°C

DRAWN	DATE	VICOR SWD			
KRISHNA	22/03/2010	 SMT CAPACITOR - (Y) 4700pF $\pm 20\%$ 250 VAC			
<small>UNLESS OTHERWISE SPECIFIED DIMENSIONS ARE MM [INCH] TOLERANCES ARE: DECIMALS ANGLES X.XX [X.X] = ± 0.01 [0.25] $\pm 1^\circ$ X.XXX [X.XX] = ± 0.005 [0.127]</small>					
MATERIAL	FINISH	SIZE	CAGE CODE	DWG NO	REV
	THIRD ANGLE PROJECTION	B	67131	25283	1
 DO NOT SCALE DRAWING		SCALE 2 : 1		SHEET 1 OF 1	

8

7

6

5

4

3

2

1