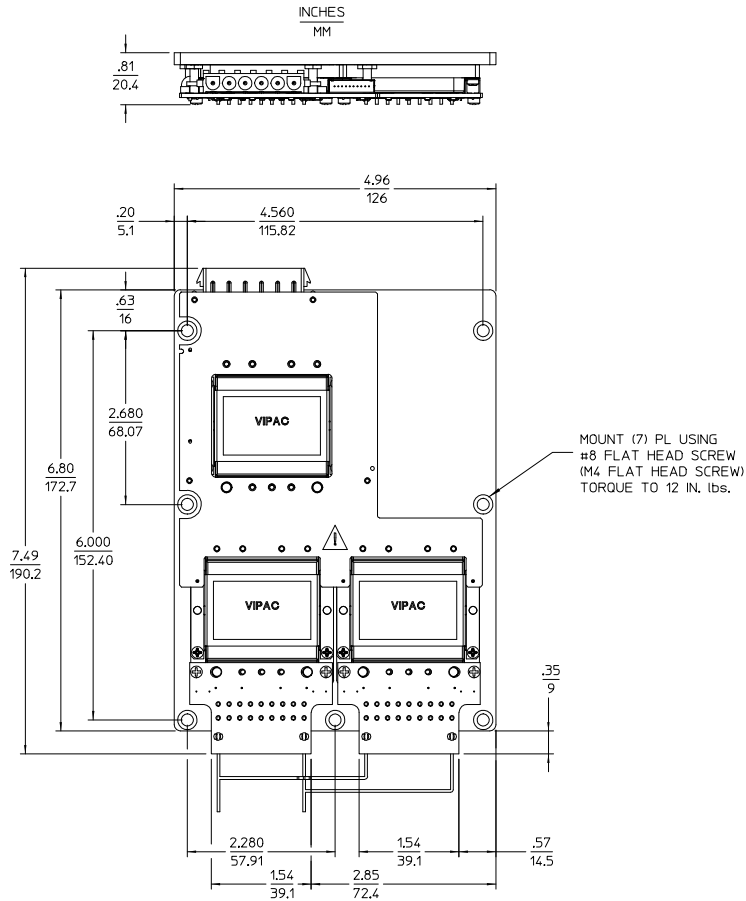


REV.	DESCRIPTION	DATE	APVD
SEE SHEET 1			

CONFIGURATION 'B'

COLDPLATE VERSION SHOWN
SINGLE OUTPUT
WITH PLUGMATES

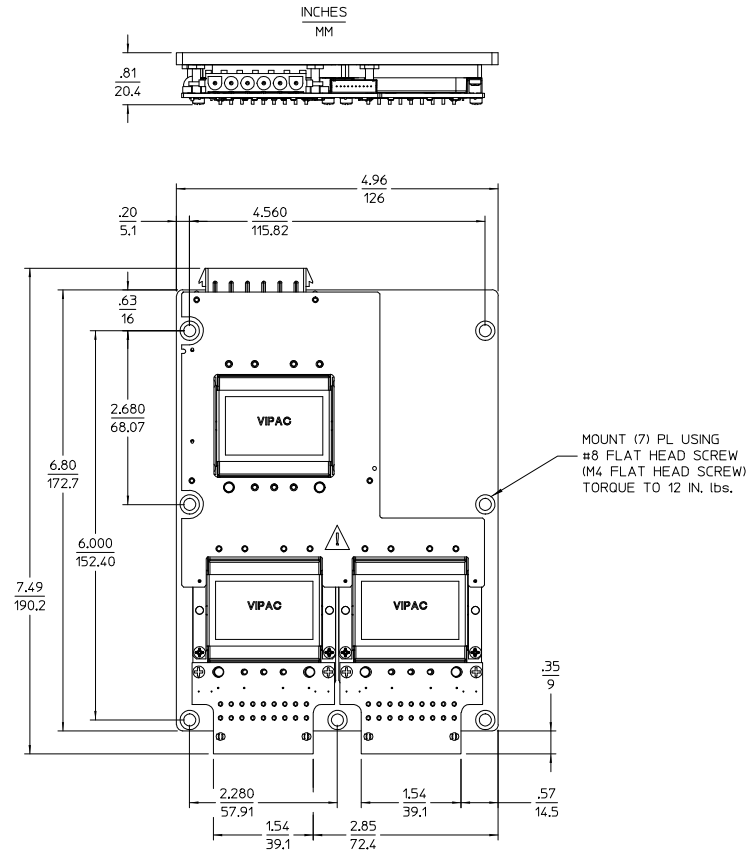


CUSTOMER MUST WIRE OUTPUTS OF CONVERTERS IN PARALLEL AS SHOWN REFER TO DATA SHEET FOR DETAILS.

TOLERANCES: $\frac{.XX}{MM} = \frac{.02}{.5}$ $\frac{.XXX}{MM} = \frac{.010}{.25}$

CONFIGURATION 'B'

COLDPLATE VERSION SHOWN
DUAL OUTPUT
WITH PLUGMATES

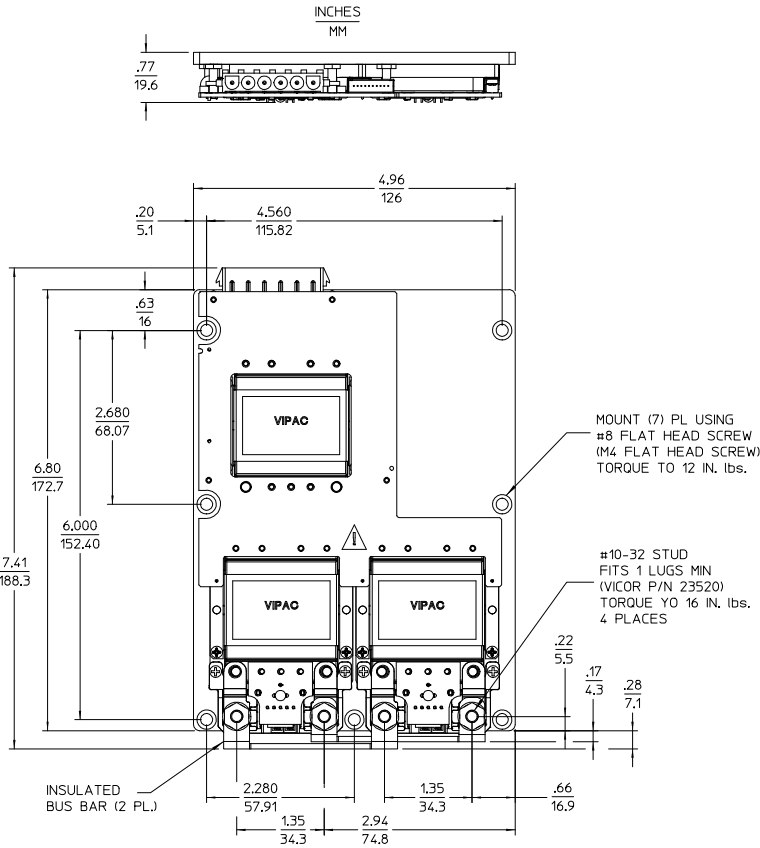


TOLERANCES: $\frac{.XX}{MM} = \frac{.02}{.5}$ $\frac{.XXX}{MM} = \frac{.010}{.25}$

DRAWN BY A. RIZMAR	DATE 08/28/08				
<small>UNLESS OTHERWISE SPECIFIED DIMENSIONS ARE IN INCHES TOLERANCES ARE: FRACTIONS DECIMALS ANGLES +1/64 .001 .010 .010</small>					
THIRD ANGLE PROJECTION		SIZE D	PSCM NO. 67131	DWG NO. 33016	REV 1
DO NOT SCALE DRAWING		SCALE 1:1	SHEET 2 OF 2		

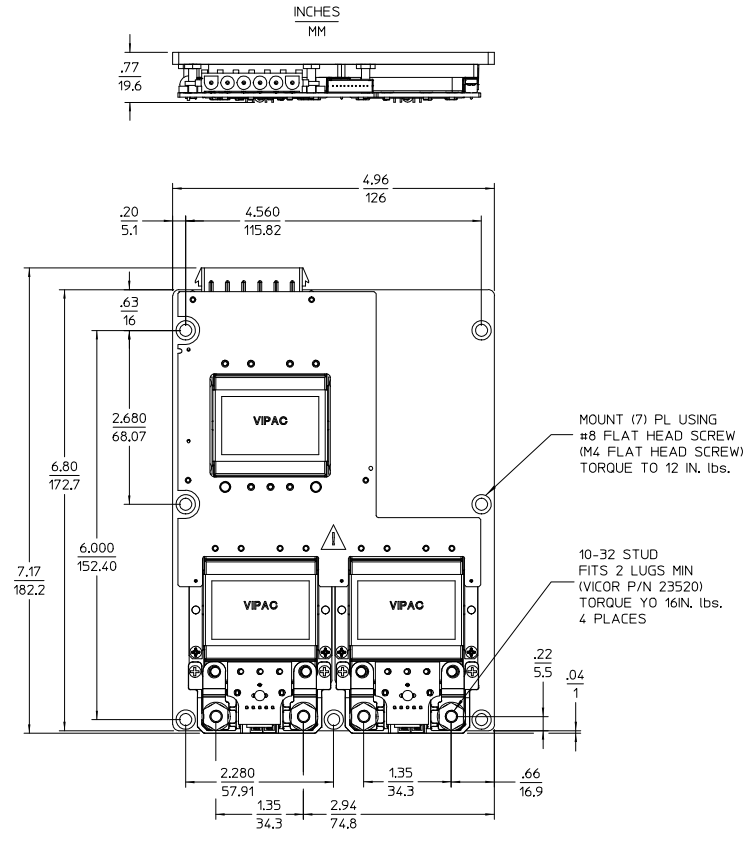
REV.	DESCRIPTION	DATE	APVD
1	RELEASE PER ECO REQUEST E080940	REJH 05/06/08	AK

CONFIGURATION 'B'
COLDPLATE VERSION SHOWN
SINGLE OUTPUT
WITH LUGMATES



TOLERANCES: .XX .02
MM .5 .XXX .010
MM .25

CONFIGURATION 'B'
COLDPLATE VERSION SHOWN
DUAL OUTPUT
WITH LUGMATES



TOLERANCES: .XX .02
MM .5 .XXX .010
MM .25

DRAWN BY A. RIZMAR	DATE 08/28/08	VICOR			
UNLESS OTHERWISE SPECIFIED DIMENSIONS ARE IN INCHES TOLERANCES ARE: FRACTIONS DECIMALS ANGLES +1/16 .001 .010 .010					
THIRD ANGLE PROJECTION		SIZE D	P/SCH NO. 67131	DWG NO. 33016	REV 1
DO NOT SCALE DRAWING		SCALE 1:1	SHEET 1 OF 2		