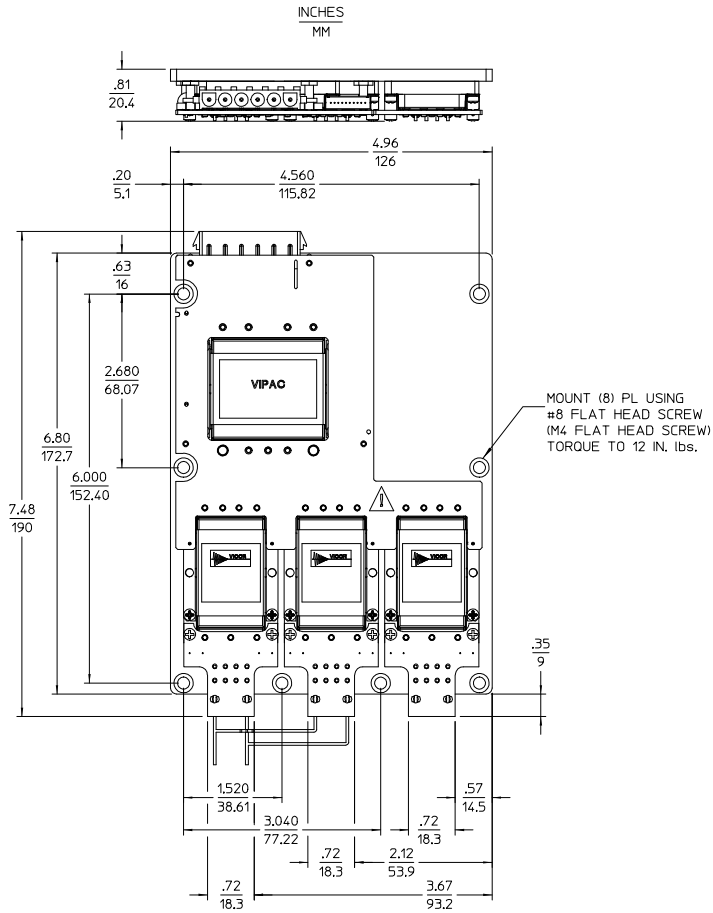


REV.	DESCRIPTION	DATE	APVD
SEE SHEET 1			

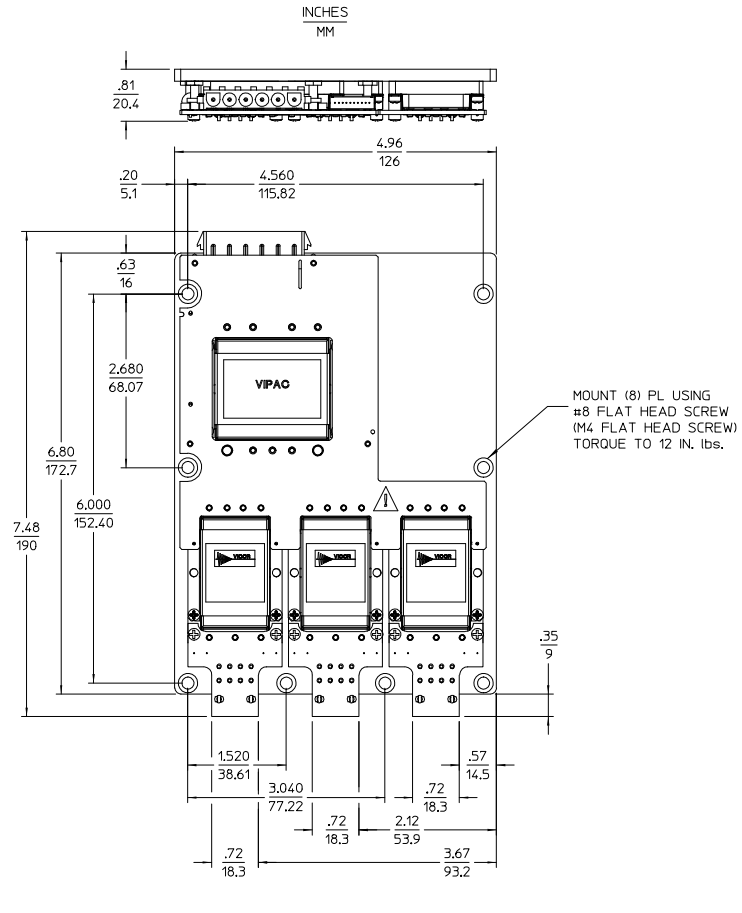
CONFIGURATION 'A'
COLDPLATE VERSION SHOWN
DUAL OUTPUT
WITH PLUGMATES



CUSTOMER MUST WIRE OUTPUTS OF CONVERTERS IN PARALLEL AS SHOWN. REFER TO DATA SHEET FOR DETAILS.

TOLERANCES: $\frac{.XX}{MM} = \frac{.02}{.5}$ $\frac{XXX}{MM} = \frac{.010}{.25}$

CONFIGURATION 'A'
COLDPLATE VERSION SHOWN
TRIPLE OUTPUT
WITH PLUGMATES



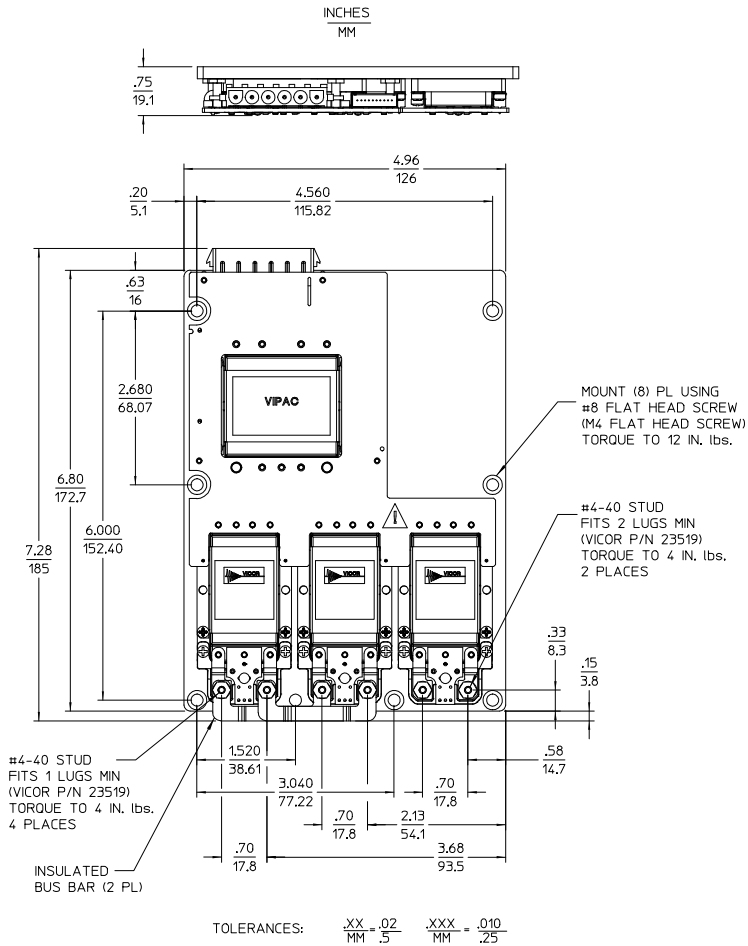
TOLERANCES: $\frac{.XX}{MM} = \frac{.02}{.5}$ $\frac{XXX}{MM} = \frac{.010}{.25}$

DRAWN BY: A. RIZMAR	DATE: 08/01/08			
<small>UNLESS OTHERWISE SPECIFIED DIMENSIONS ARE IN INCHES TOLERANCES ARE: FRACTIONS DECIMALS ANGLES XXX .XX .01 XXX .00 XXX .00</small>				
OUTLINE DWG VIPAC CONFIG "A" AC		PSCM NO. 67131	DWG NO. 33015	REV 1
THIRD ANGLE PROJECTION 	SCALE 1:1	SHEET 2	OF 2	

REV.	DESCRIPTION	DATE	APVD
1	RELEASE PER ECO REQUEST E080940	REJH 05/06/08	AK

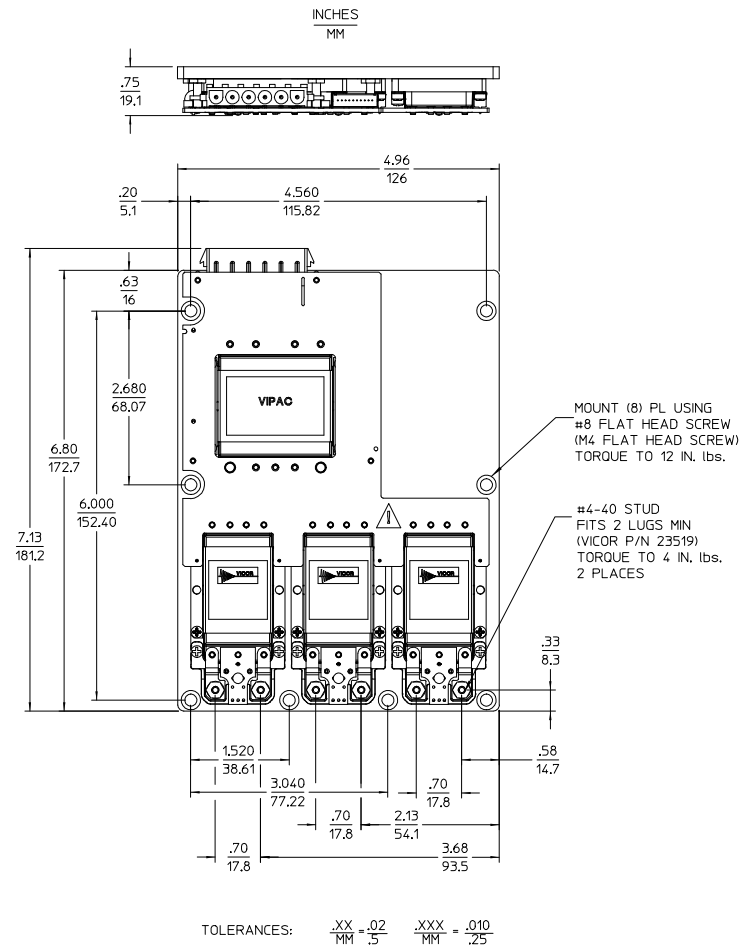
CONFIGURATION 'A'

COLDPLATE VERSION SHOWN
DUAL OUTPUT
WITH LUGMATES



CONFIGURATION 'A'

COLDPLATE VERSION SHOWN
TRIPLE OUTPUT
WITH LUGMATES



DRAWN BY A. RIZMAR	DATE 08/01/08				
UNLESS OTHERWISE SPECIFIED DIMENSIONS ARE IN INCHES TOLERANCES ARE: FRACTIONS DECIMALS ANGLES .XX+.01 .XX+.01 .XX+.01 .XXX+.005 .XXX+.005 .XXX+.005					
THIRD ANGLE PROJECTION		SIZE D	P/SCH NO. 67131	DWG NO. 33015	REV 1
DO NOT SCALE DRAWING		SCALE 1:1	SHEET 1 OF 2		