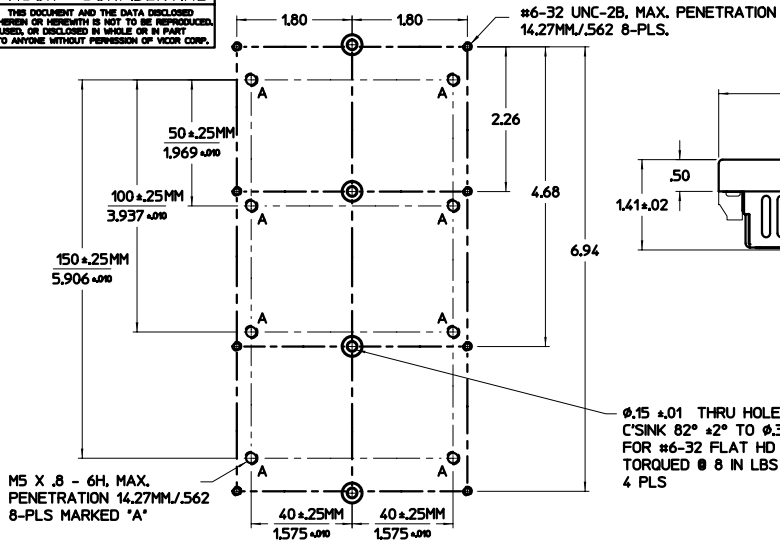


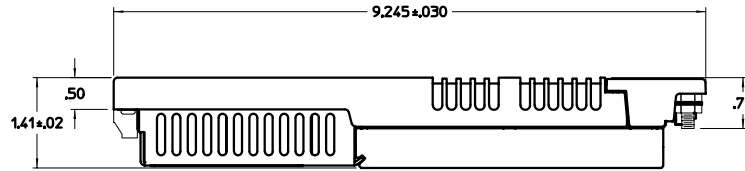
VICOR CONFIDENTIAL

THIS DOCUMENT AND THE DATA DISCLOSED HEREIN OR HEREWITH IS NOT TO BE REPRODUCED, USED, OR DISCLOSED IN WHOLE OR IN PART TO ANYONE WITHOUT PERMISSION OF VICOR CORP.

REV.	DESCRIPTION	DATE	APVD
01	RELEASE PER E970285	DPK 7/2/97	RCH
02	REVISED PER E990099	DKC 3/23/98	RCH

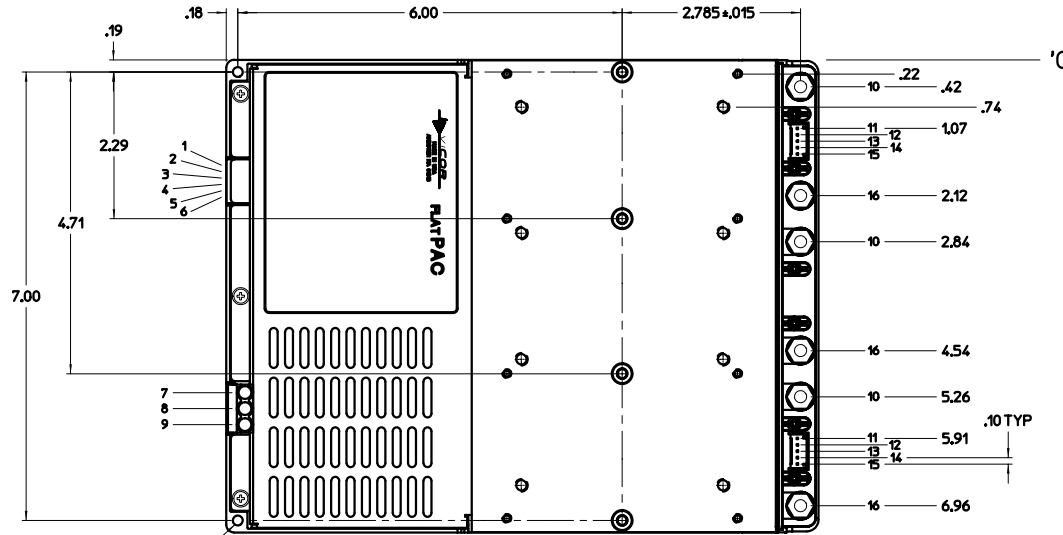
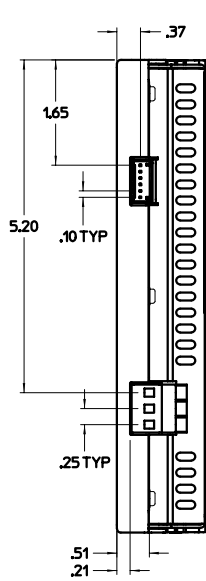


MOUNTING HOLE PATTERN

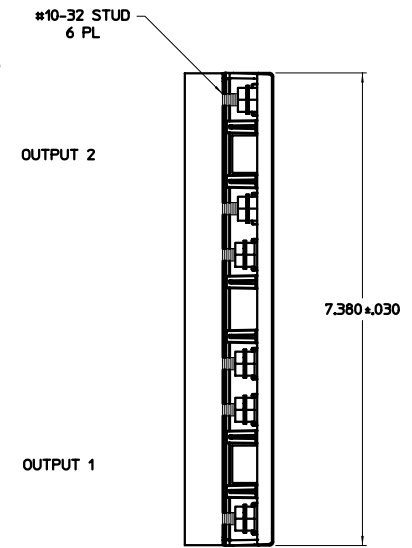


- 1 MOD DIS -
- 2 MOD DIS +
- 3 AC OK -
- 4 AC OK +
- 5 BUS OK -
- 6 BUS OK +
- 7 AC IN L1
- 8 AC IN L2/N
- 9 CHASSIS GND
- 10 + OUT
- 11 + OUT SENSE
- 12 + SENSE
- 13 TRIM
- 14 - SENSE
- 15 - OUT SENSE
- 16 - OUT

Ø.15 ±.01 THRU HOLE  
C'SINK 82° ±2° TO Ø.31  
FOR #6-32 FLAT HD SCR  
TORQUED 8 IN LBS  
4 PLS



DUAL OUTPUT  
'Q' CONFIGURATION



NOTES:  
1. MOUNTING HOLE DIMENSIONS ARE METRIC INCH

DESIGN BY	DATE	VICOR	
RELEASE CONTROLLED	0/97	OUTLINE DRAWING, 600 W A/R FLATPAC Q CONFIG	
PRODUCTION	000000	SIZE	D 87101
SCALE	FULL	DWG NO	16754
REV	02	SHEET	1 OF 1