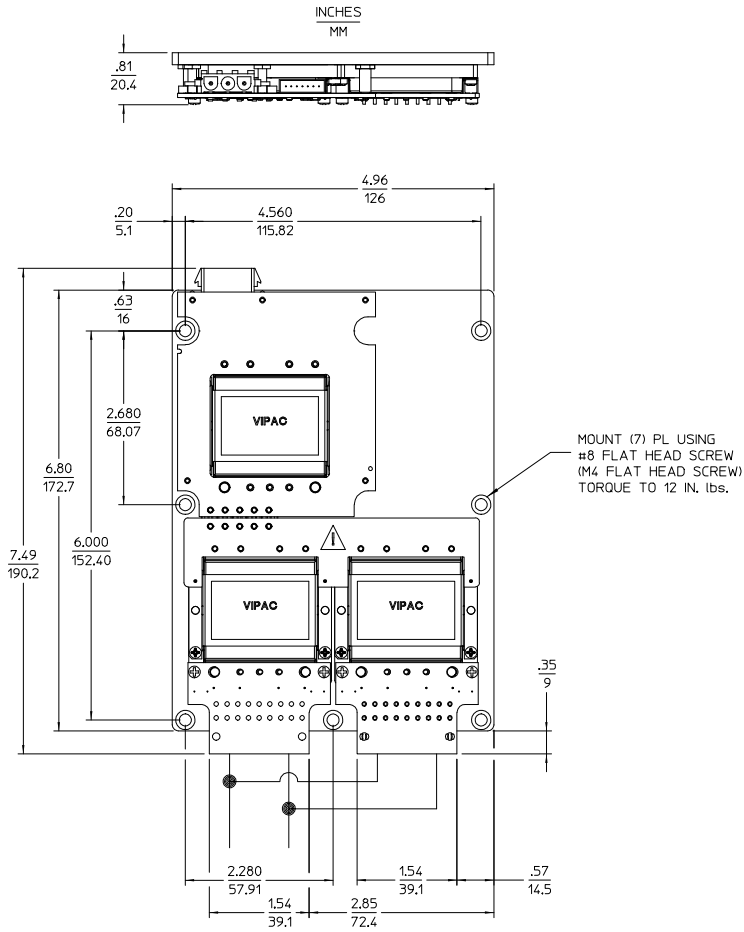


REV.	DESCRIPTION	DATE	APVD
SEE SHEET 1			

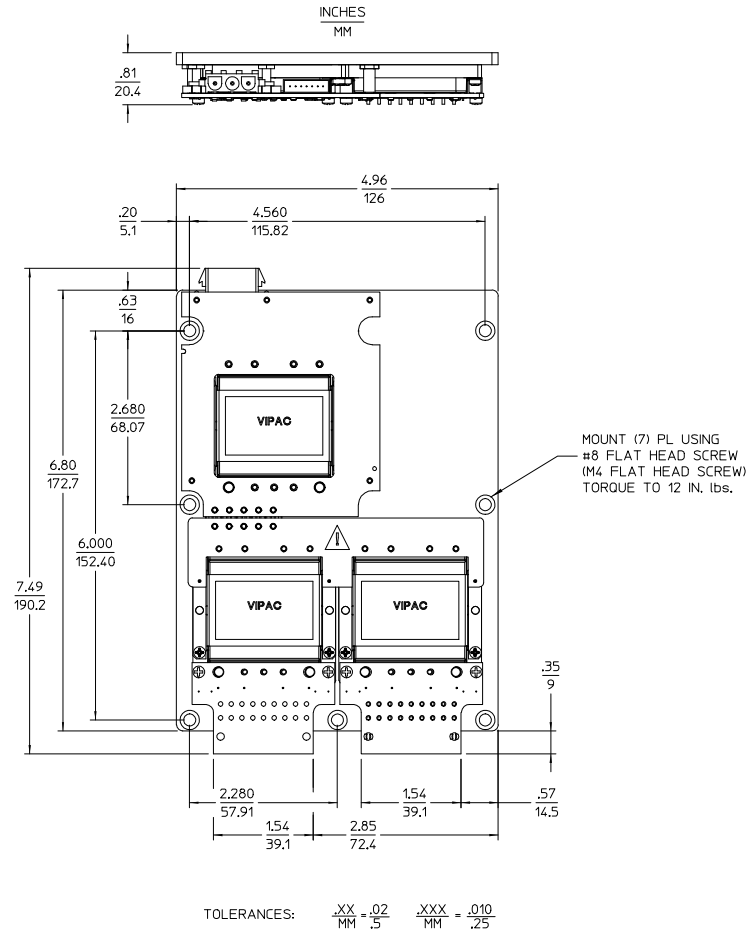
**CONFIGURATION 'B'**  
 COLDPLATE VERSION SHOWN  
 SINGLE OUTPUT  
 WITH PLUGMATES



CUSTOMER MUST WIRE OUTPUTS OF CONVERTERS IN PARALLEL AS SHOWN REFER TO DATA SHEET FOR DETAILS.

TOLERANCES:  $\frac{XX}{MM} = \frac{.02}{.5}$   $\frac{XXX}{MM} = \frac{.010}{.25}$

**CONFIGURATION 'B'**  
 COLDPLATE VERSION SHOWN  
 DUAL OUTPUT  
 WITH PLUGMATES



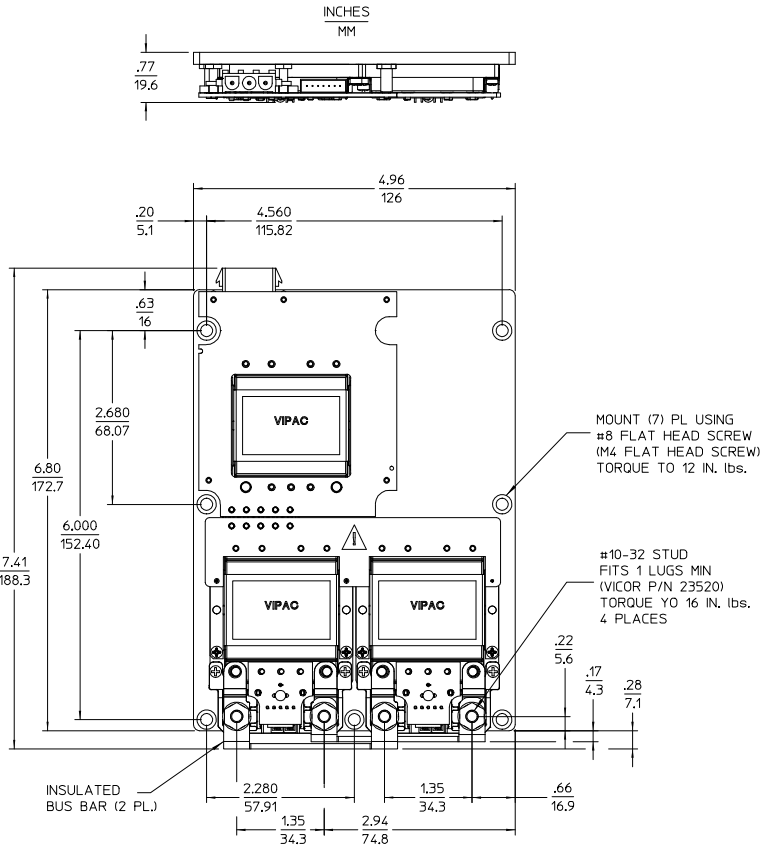
TOLERANCES:  $\frac{XX}{MM} = \frac{.02}{.5}$   $\frac{XXX}{MM} = \frac{.010}{.25}$

DRAWN BY A. RIZMAR	DATE 12/12/00				
UNLESS OTHERWISE SPECIFIED DIMENSIONS ARE IN INCHES TOLERANCES ARE: FRACTIONS DECIMALS ANGLES .XX +.01 .XX - .005 +.01					
THIRD ANGLE PROJECTION		SIZE D	PSCH NO. 67131	DWG NO. 21318	REV #6
DO NOT SCALE DRAWING		SCALE 1:1	SHEET 2 OF 2		

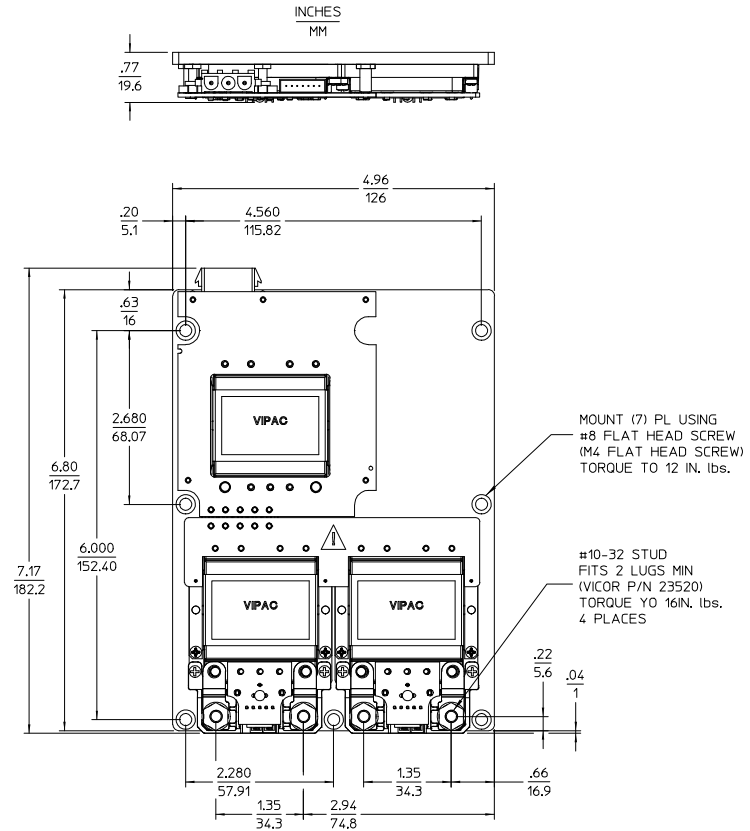
THIS DOCUMENT AND THE DATA DISCLOSED HEREIN OR HEREWITH IS NOT TO BE REPRODUCED, USED, OR DISCLOSED IN WHOLE OR IN PART TO ANYONE WITHOUT PERMISSION OF VICOR CORP.

REV.	DESCRIPTION	DATE	APVD
#1	DRAWN FOR DEVELOPMENT	AK 12/13/00	TR
#2	REVSD PER MRKUP	AK 7/30/01	GCK
#3	REVSD PER MRKUP	AK 12/04/01	GCK
#4	ADDED SHEET 2 AND 3	AK 11/08/02	CFH
#5	ADDED WIRE OUTPUTS: SHT1/3 50	DPK 03/12/03	AK
#6	REVSD PER MRKUP	AK 05/04/05	GCK

**CONFIGURATION 'B'**  
COLDPLATE VERSION SHOWN  
SINGLE OUTPUT  
WITH LUGMATES



**CONFIGURATION 'B'**  
COLDPLATE VERSION SHOWN  
DUAL OUTPUT  
WITH LUGMATES



DRAWN BY A. ARDMAN	DATE 12/13/00				
<small>UNLESS OTHERWISE SPECIFIED DIMENSIONS ARE IN INCHES TOLERANCES ARE: FRACTIONS DECIMALS ANGLES +1/16 .001 .010 +1/32 .002 .010 +1/64 .003 .010</small>					
THIRD ANGLE PROJECTION		SIZE D	PSCM NO. 67131	DWG NO. 21318	REV #6
DO NOT SCALE DRAWING		SCALE 1:1	SHEET 1		OF 2