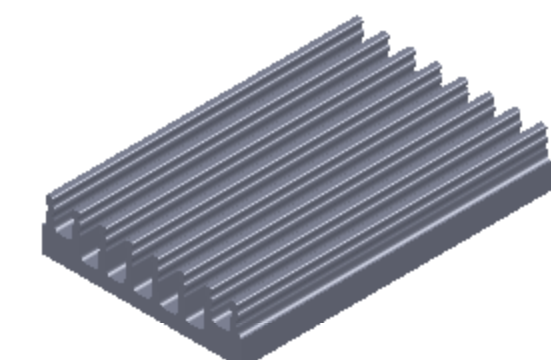
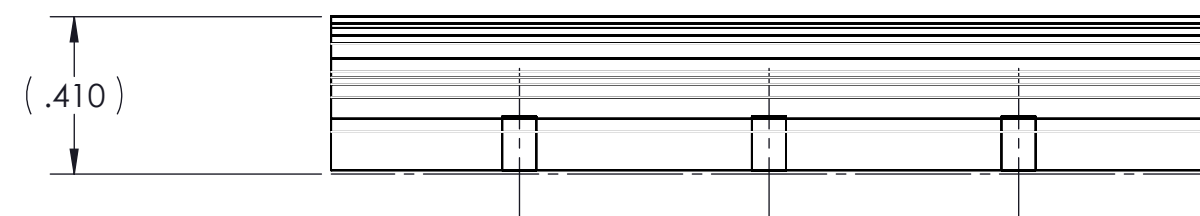
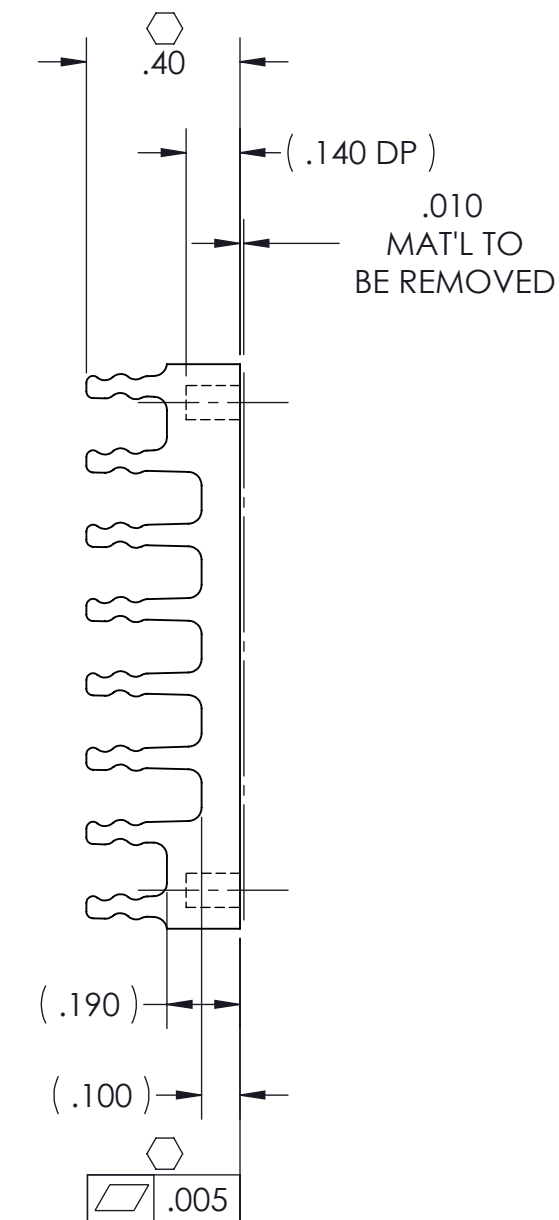
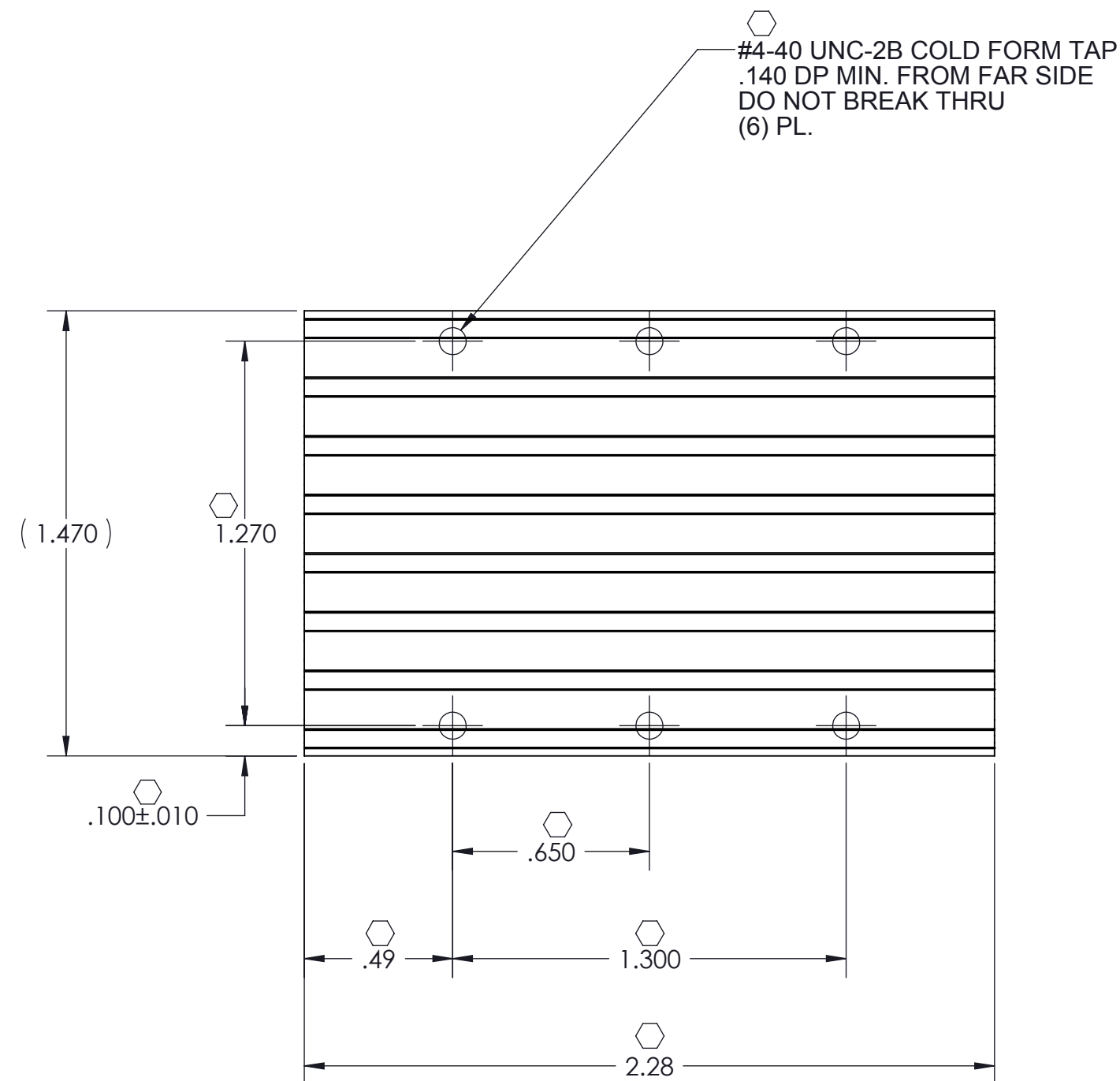


THIS DOCUMENT AND THE DATA DISCLOSED HEREIN OR HEREWITH IS NOT TO BE REPRODUCED, USED OR DISCLOSED IN WHOLE OR IN PART TO ANYONE WITHOUT THE PERMISSION OF VICOR CORP.

REV	DESCRIPTION	DATE	APPROVED
1	RELEASED PER E053488	01/04/06	ECF
2	REVISED PER E090758	05/08/09	REJH
3	REDRAWN PER E100902	7/14/10	KUK



NOTES:

1. MATERIAL: EXTRUSION SEE SHEET 2 OF 2.
2. REMOVE ALL BURRS AND SHARP EDGES
3. CLEAR FINISH, RoHS COMPLIANT, CHROMIUM FREE PER CST-0001 LATEST REVISION.
4. "⬡" DENOTES CRITICAL CHARACTERISTIC FOR LOT INSPECTION
5. DIMENSIONS ARE INCHES ONLY.

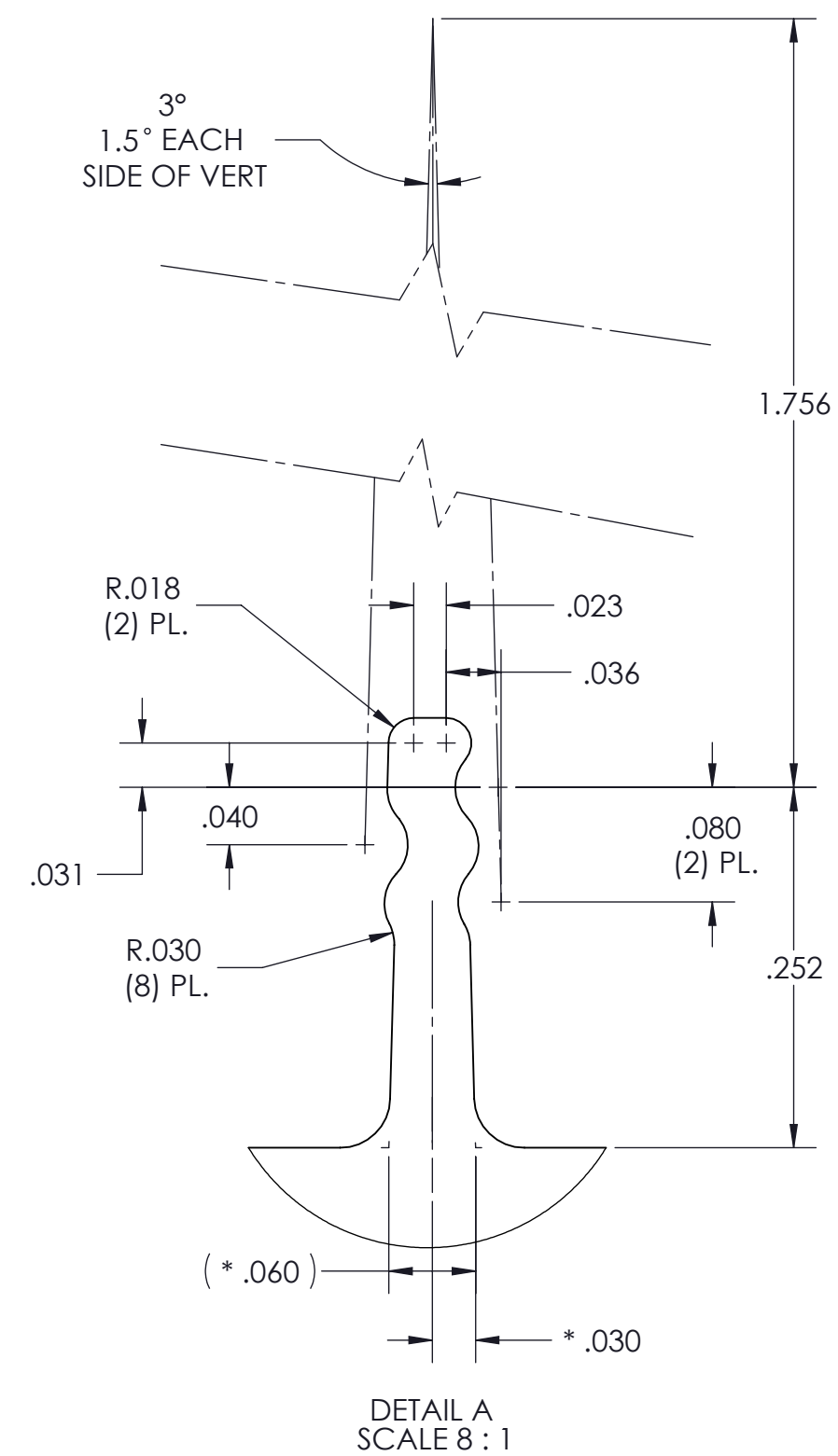
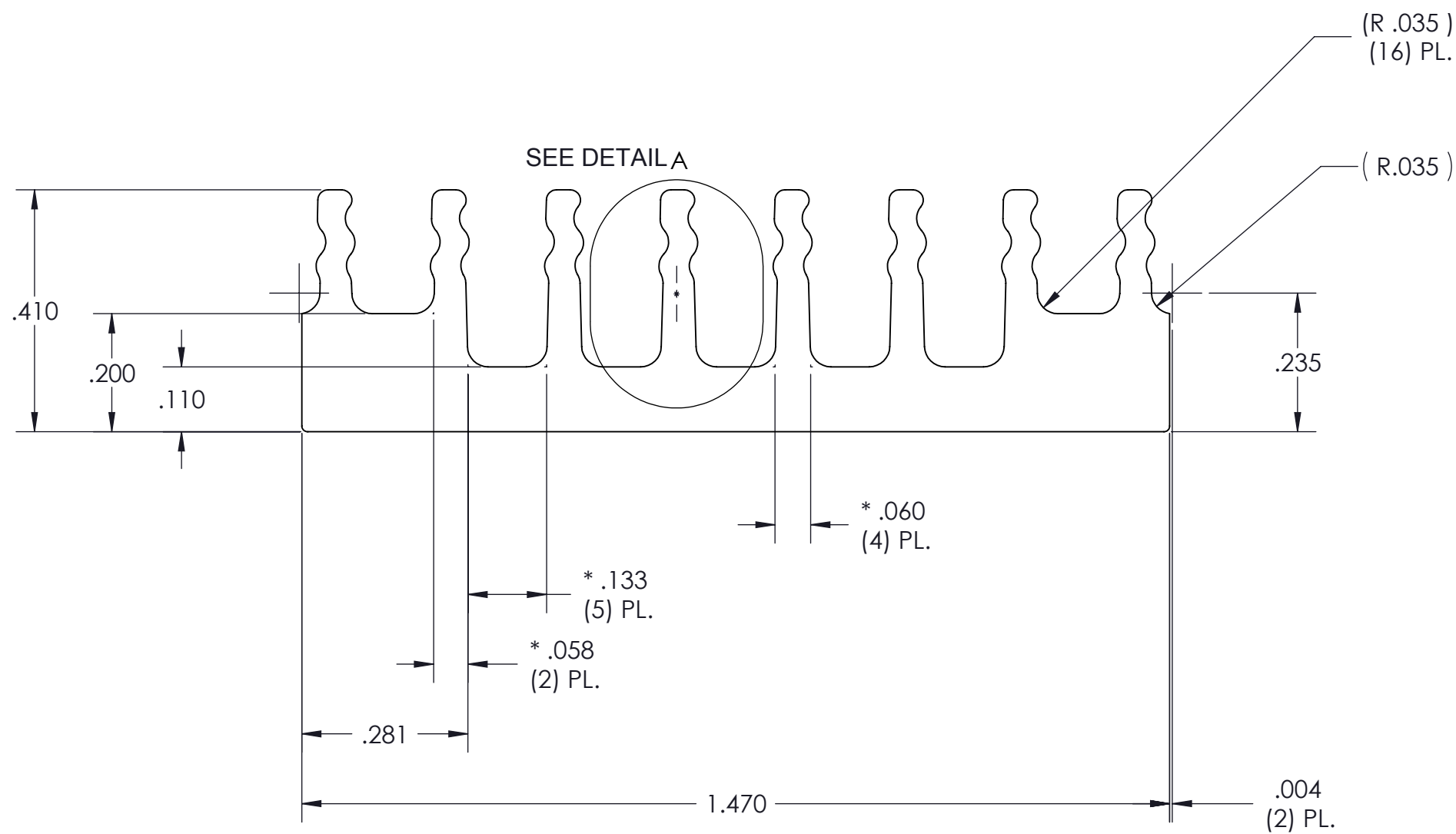
DRAWN	DATE				
P.E.IENI	12/01/05				
MATERIAL	UNLESS OTHERWISE SPECIFIED DIMENSIONS ARE INCH [MM]	<b>'HS CFG "C" LONG .4H' LOW FLOW THREADED</b>			
SEE NOTES	TOLERANCES ARE: DECIMALS ANGLES X.XX [X.X] = ±0.01 [0.25] ±1° X.XXX [X.XX] = ±0.005 [0.127]				
FINISH	THIRD ANGLE PROJECTION	SIZE	CAGE CODE	DWG NO	REV
SEE NOTES		<b>C</b>	<b>67131</b>	<b>32174</b>	<b>3</b>
		SCALE 2 : 1		SHEET 1 OF 2	

VICOR CONFIDENTIAL

THIS DOCUMENT AND THE DATA DISCLOSED HEREIN OR HEREWITH IS NOT TO BE REPRODUCED, USED OR DISCLOSED IN WHOLE OR IN PART TO ANYONE WITHOUT THE PERMISSION OF VICOR CORP.

REVISIONS

REV	DESCRIPTION	DATE	APPROVED
	SEE SHEET 1 OF 2		



PROFILE COMMON FOR
30719
32174

- NOTES:
- MAT'L: ALUMINUM 6063-T5"
  - \* DENOTES DIMENSION TO THEORETICAL SHARP CORNER.
  - DIMENSIONS ARE INCHES ONLY.

DRAWN ANUYUGH RAGIPANI	DATE 05/08/09	<b>VICOR</b> <span style="float: right;">SWD</span>			
MATERIAL SEE NOTES	UNLESS OTHERWISE SPECIFIED DIMENSIONS ARE INCH [MM] TOLERANCES ARE: DECIMALS ANGLES X.XX [X.X] = ±0.01 [0.25] ±1° X.XXX [X.XX] = ±0.005 [0.127]	<b>'HS CFG "C" LONG .4H', LOW FLOW, THREADED, EXTRUSION</b>			
FINISH SEE NOTES	THIRD ANGLE PROJECTION 	SIZE <b>C</b>	CAGE CODE <b>67131</b>	DWG NO <b>32174</b>	REV <b>3</b>
		SCALE 4 : 1		SHEET 2 OF 2	