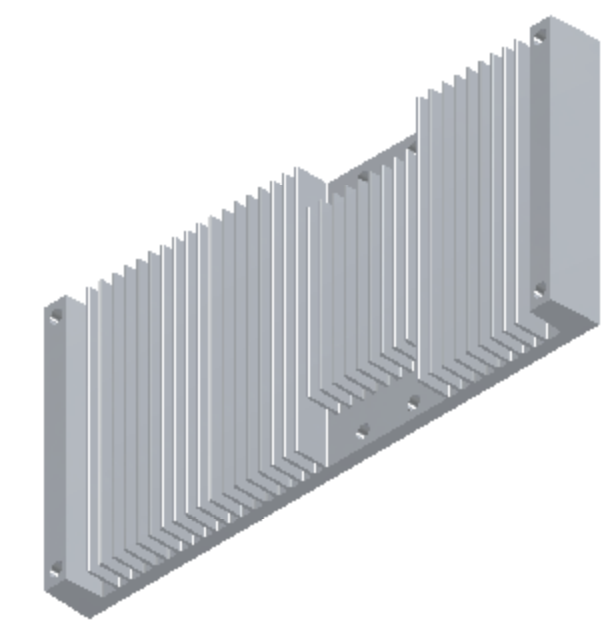
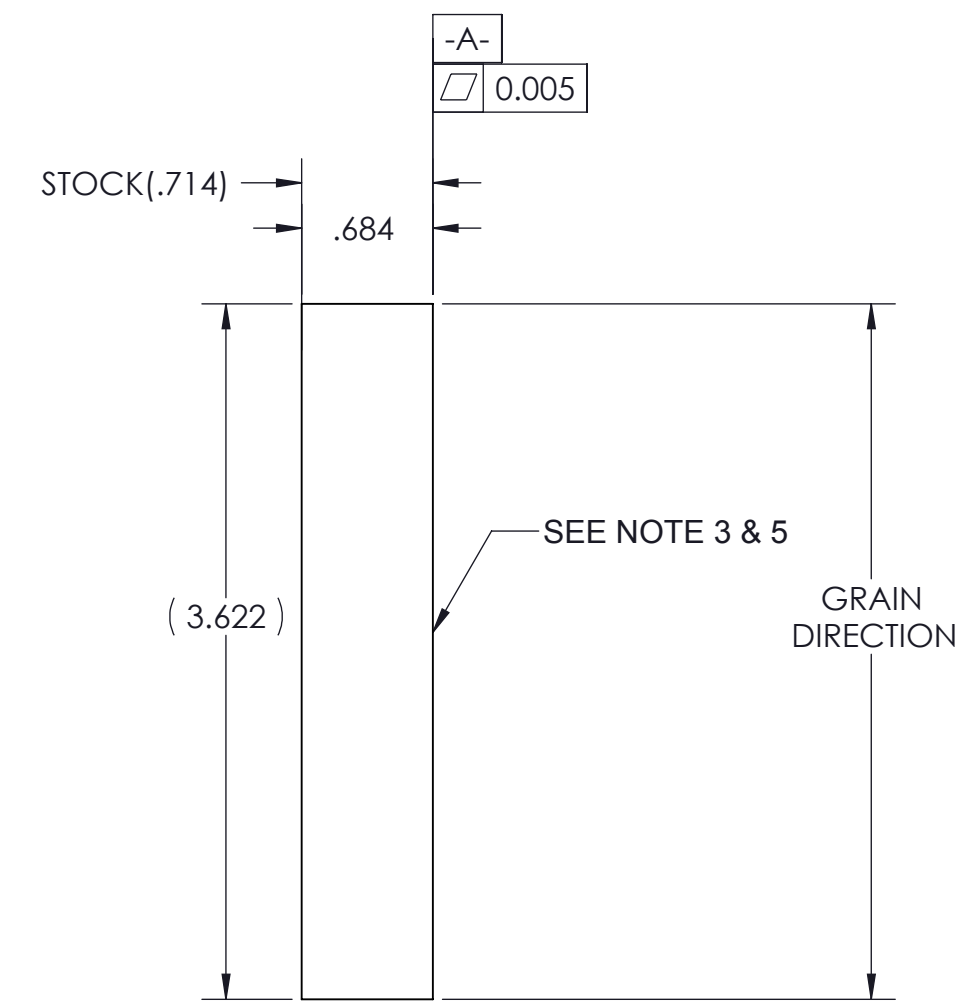
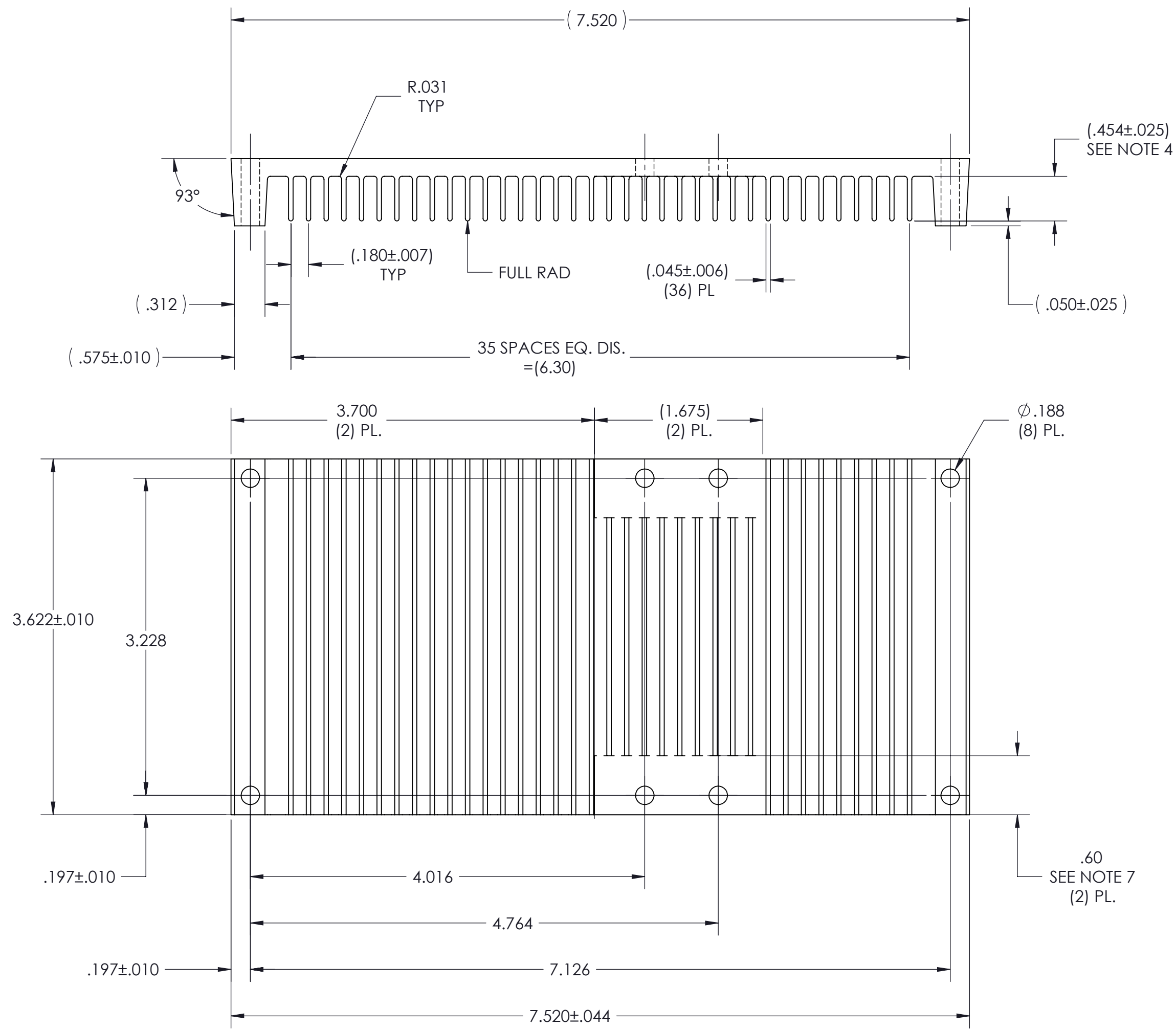


THIS DOCUMENT AND THE DATA DISCLOSED HEREIN OR HEREWITH IS NOT TO BE REPRODUCED, USED OR DISCLOSED IN WHOLE OR IN PART TO ANYONE WITHOUT THE PERMISSION OF VICOR CORP.

REV	DESCRIPTION	DATE	APPROVED
1	RELEASED PER E054246	1/3/06	ECF
2	REVISED PER E100888A	07/09/10	DCS



- NOTES:
- MATERIAL: ALUM. 6063-T5 (EXT#82655)(040393)
 - REMOVE ALL BURRS AND SHARP EDGES.
 - CLEAR FINISH, RoHS COMPLIANT, CHROMIUM FREE PER CST-0001 LATEST REVISION.
 - TOLERANCE ON DIMENSION INDICATED TO ALLOW FOR CROWN OF RAW STOCK.
 - NO MACHINING MISMATCH PERMITTED THIS SURFACE.
 - NOTES 3 AND 5 ARE CRITICAL CHARACTERISTIC FOR LOT INSPECTION.
 - FINS SHALL BE MILLED FLUSH TO BASE OR -.010" UNDER FLUSH.
 - VICOR WORKMANSHIP SPECIFICATIONS WS-0003 AND WS-0007 APPLY TO THE FABRICATION OF THIS ITEM.
 - DIMENSIONS ARE INCHES ONLY.

DRAWN	DATE				
P.E.IENI	12/08/05				
MATERIAL	UNLESS OTHERWISE SPECIFIED DIMENSIONS ARE INCH [MM]	F/A HS CFG "E" & "F" X-FLOW ARRAY (VIPAC)			
SEE NOTES	TOLERANCES ARE: DECIMALS ANGLES X.XX [X.X] = ±0.01 [0.25] ±1° X.XXX [X.XX] = ±0.005 [0.127]				
FINISH	THIRD ANGLE PROJECTION	SIZE	CAGE CODE	DWG NO	REV
SEE NOTES		C	67131	32179	2
		SCALE 1 : 1	SHEET 1 OF 1		