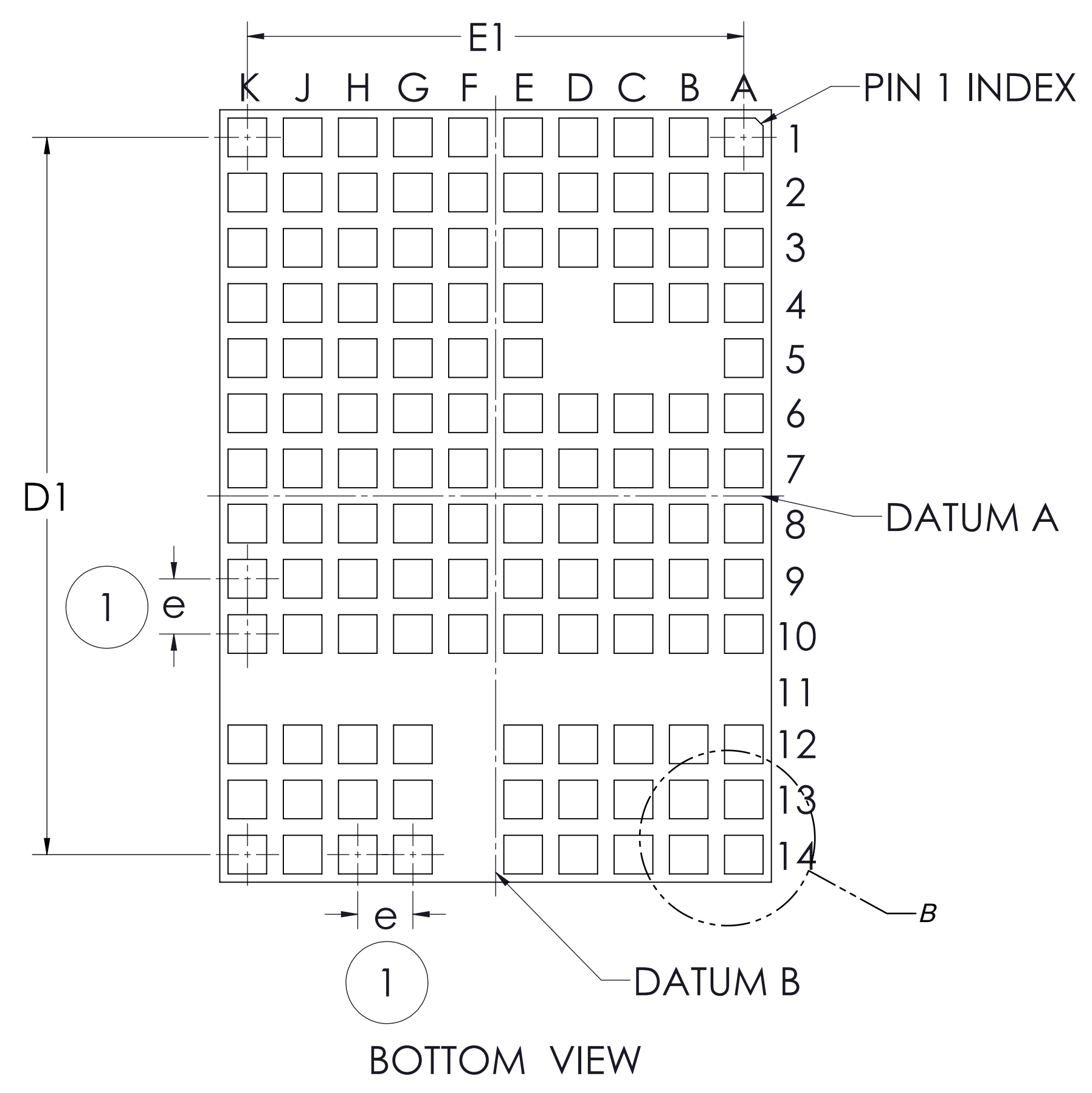
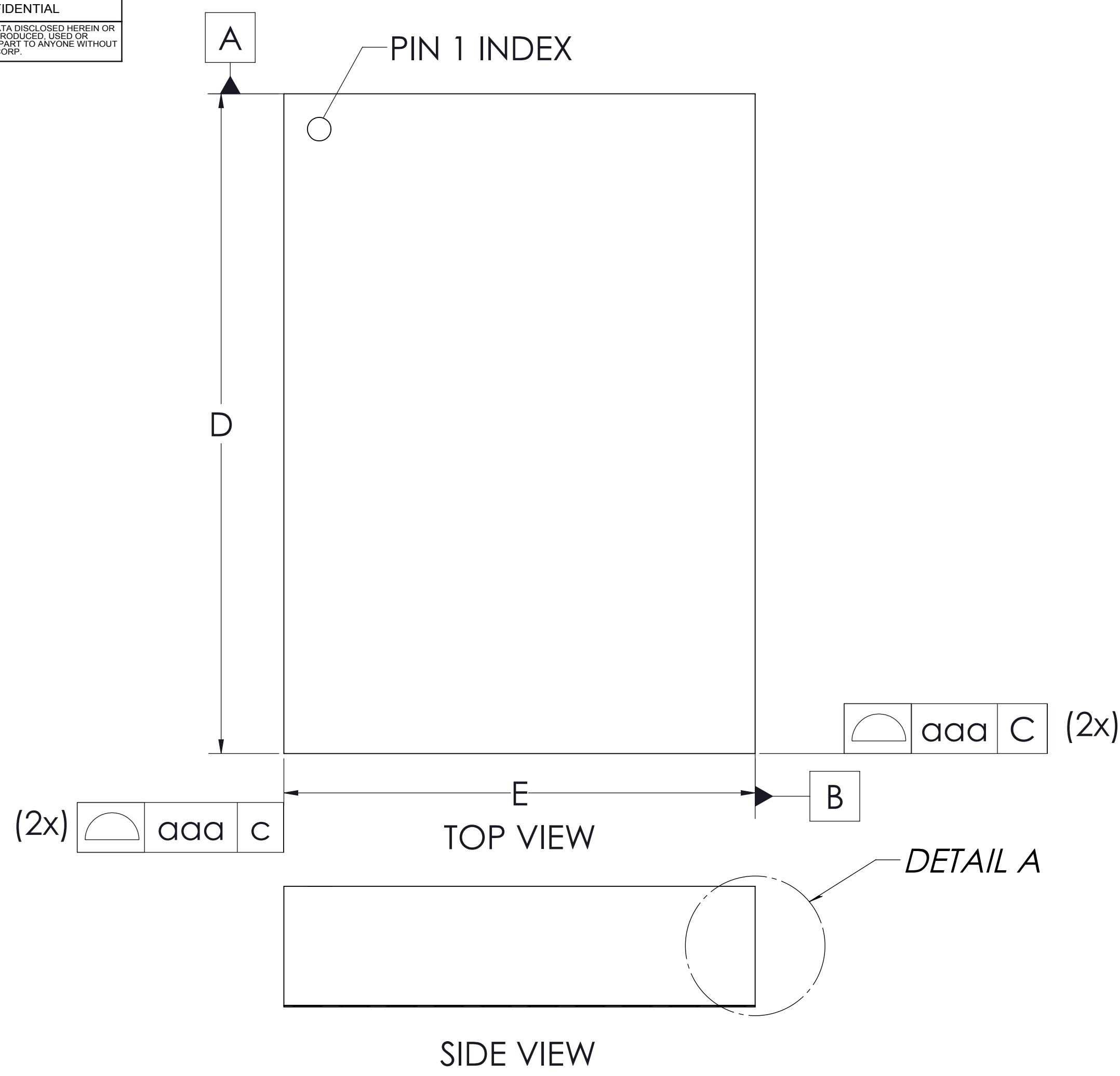


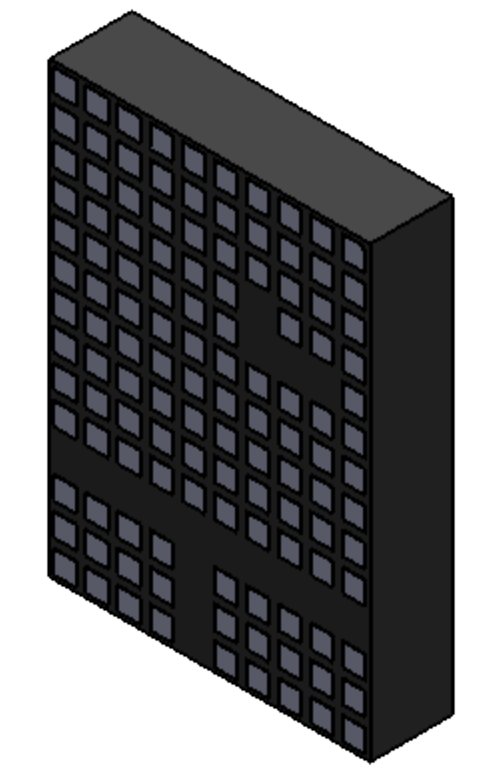
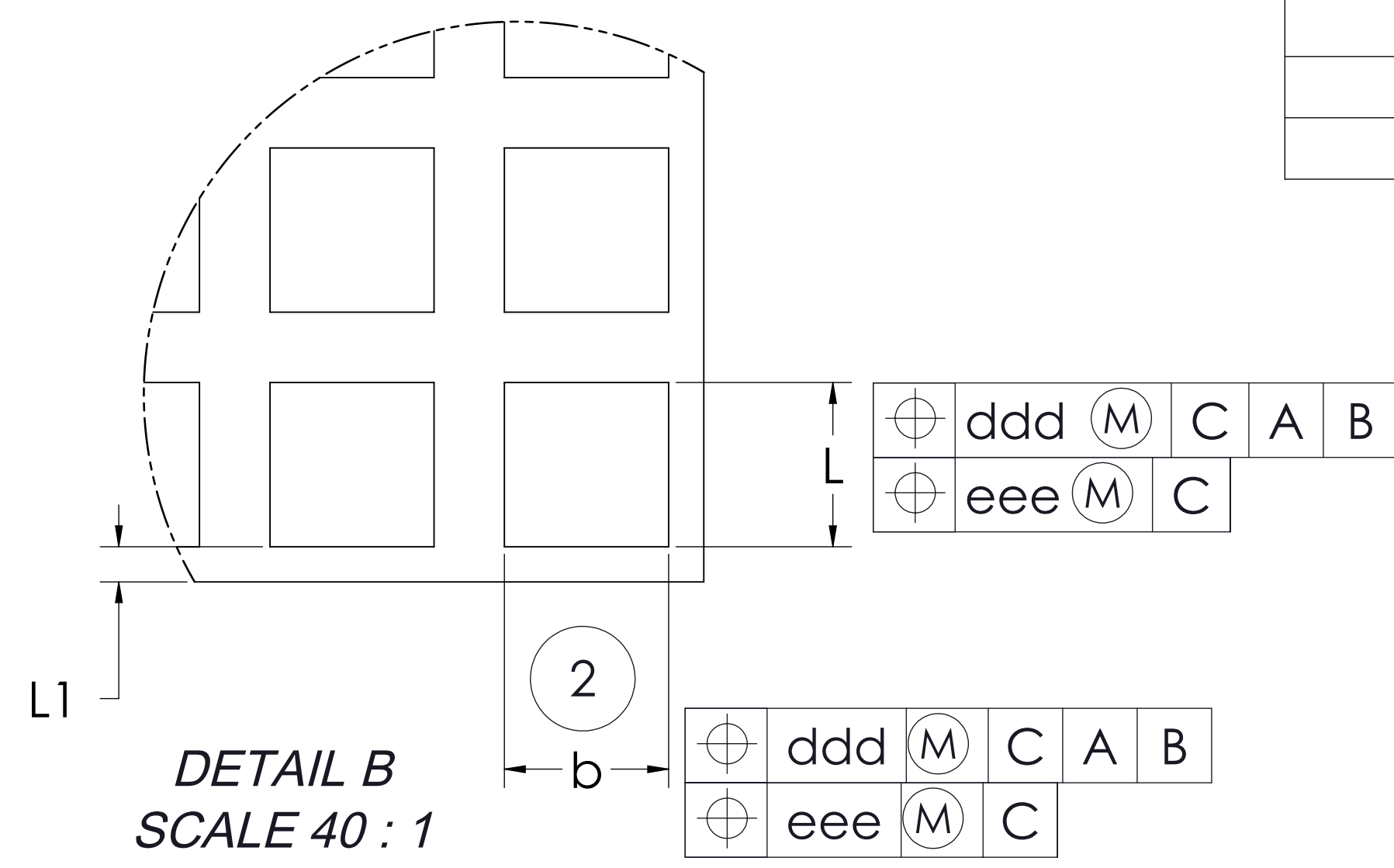
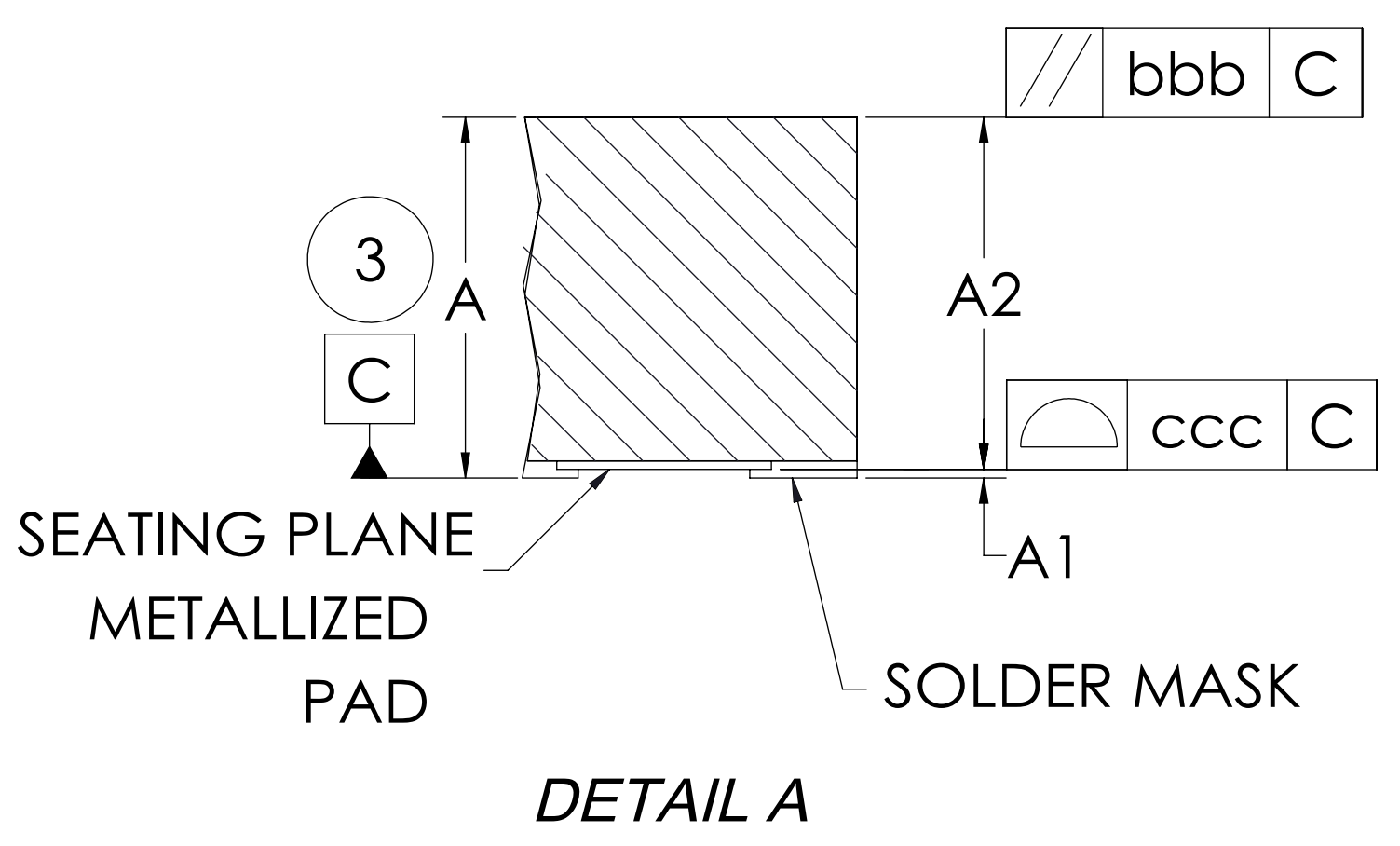
VICOR CONFIDENTIAL  
THIS DOCUMENT AND THE DATA DISCLOSED HEREIN OR HEREWITH IS NOT TO BE REPRODUCED, USED OR DISCLOSED IN ANY MANNER OR IN PART TO ANYONE WITHOUT THE PERMISSION OF VICOR CORP.

REV.	DESCRIPTION	INTL	DATE	APVD
#1	DRAWN FOR DEVELOPMENT	JF	12/10/2015	JA
#2	EDITED DRAWING SHEET	CMY	07/30/2018	GCK
#3	EDITED TITLE, ADDED PGD TO PIN 1	AY	03/28/19	GCK



10 x 14mm SIP			
DIMENSIONAL REFERENCES			
REF.	MIN.	NOM.	MAX.
A	2.49	2.56	2.63
A1	--	--	0.04
A2	--	--	2.59
b	0.50	0.55	0.60
L	0.50	0.55	0.60
D	14.00 BSC		
E	10.00 BSC		
D1	13.00 BSC		
E1	9.00 BSC		
e	1.00 BSC		
L1	0.175	0.225	0.250

DIMENSIONAL REFERENCES	
REF.	TOLERANCE OF FORM AND POSITION
aaa	0.10
bbb	0.10
ccc	0.08
ddd	0.10
eee	0.08

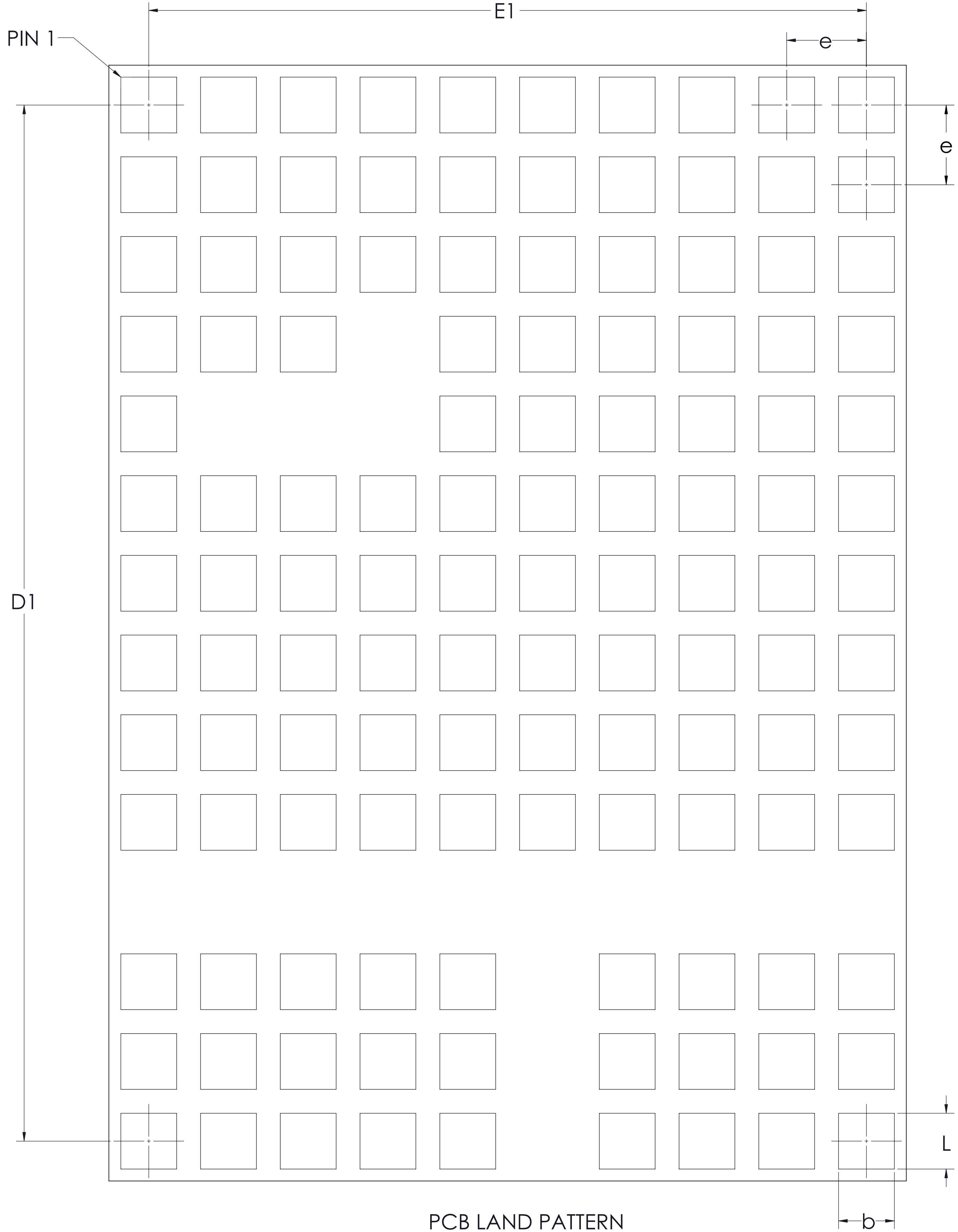


- NOTES:
- 'e' REPRESENTS THE BASIC TERMINAL PITCH. SPECIFIES THE TRUE GEOMETRIC POSITION OF THE TERMINAL AXIS.
  - DIMENSION 'b' APPLIES TO METALLIZED TERMINAL AND IS MEASURED BETWEEN 0.00mm AND 0.25mm FROM TERMINAL TIP.
  - DIMENSION 'A' INCLUDES PACKAGE WARPAGE
  - EXPOSED METALLIZED PADS ARE CU PADS WITH SURFACE FINISH PROTECTION.
  - ALL DIMENSIONS ARE IN MM UNLESS OTHERWISE SPECIFIED.
  - RoHS COMPLIANT PER CST-0001 LATEST REVISION.

DRAWN BY Jackson Flynn	DATE 12/10/2015	<b>VICOR</b>	
UNLESS OTHERWISE SPECIFIED DIMENSIONS ARE MM (INCH)		<b>PICOR PI33xx, PI34xx, ZVS BUCK REGULATOR, 18VIN</b>	
TOLERANCES ARE: DECIMALS: ±0.10 (±0.01) ±1° ANGLES: ±0.125 (±0.005)		SIZE <b>D</b>	CAGE CODE <b>67131</b>
THIRD ANGLE PROJECTION DO NOT SCALE DRAWING		DWG NO <b>43461</b>	REV <b>#3</b>
SCALE 12:1		SHEET 1 OF 3	

VICOR CONFIDENTIAL  
THIS DOCUMENT AND THE DATA DISCLOSED HEREIN OR  
HEREIN IS NOT TO BE REPRODUCED, USED OR  
DISCLOSED IN ANY MANNER OR IN PART TO ANYONE WITHOUT  
THE PERMISSION OF VICOR CORP.

REVISIONS			
REV	DESCRIPTION	DATE	APPROVED
	SEE SHEET 1		



DIMENSIONAL REFERENCES			
REF.	MIN.	NOM.	MAX.
b	0.50	0.55	0.60
D1	13.00 BSC		
E1	9.00 BSC		
e	1.00 BSC		
L	.50	.55	.60

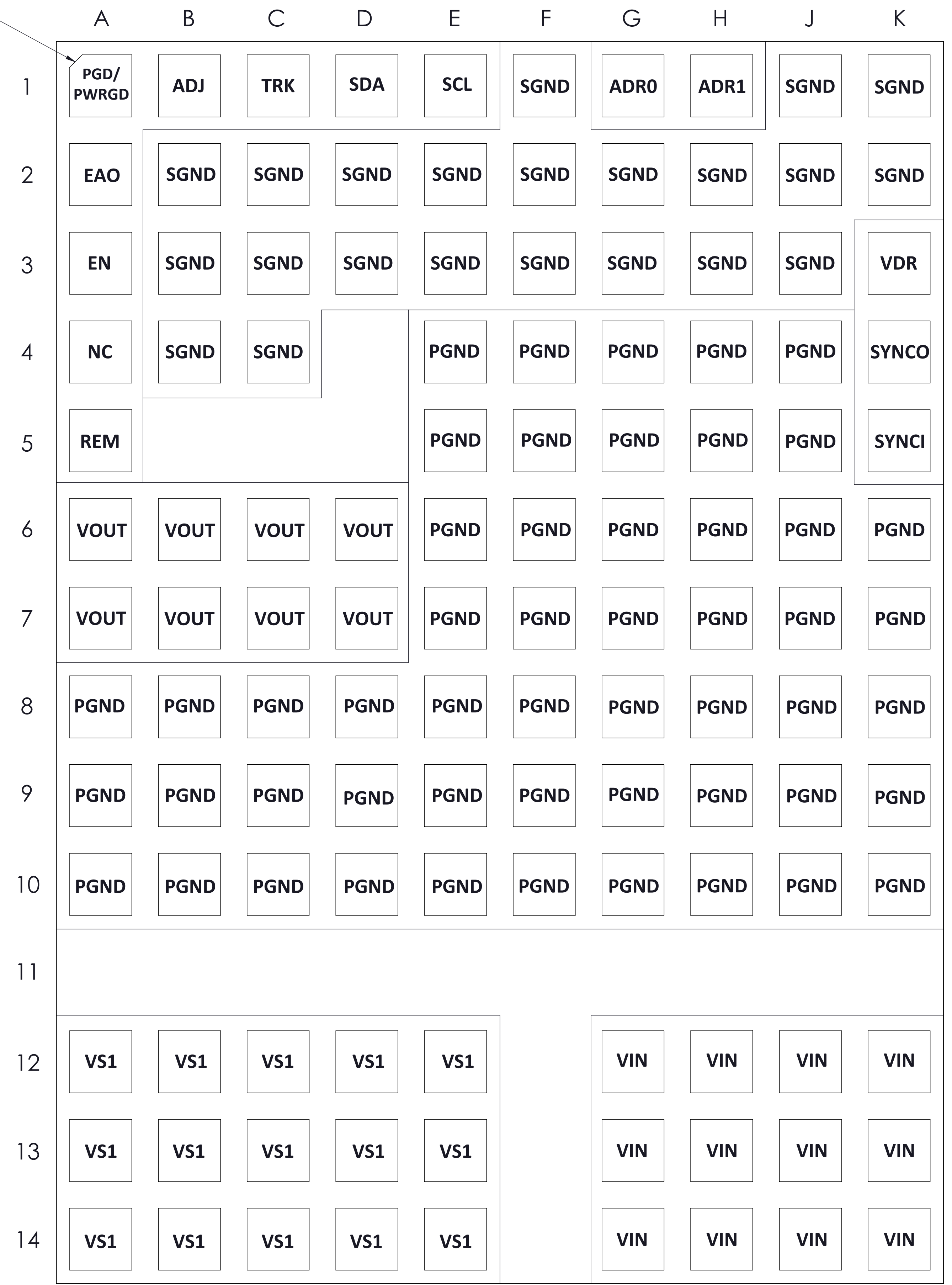
PCB LAND PATTERN

DRAWN BY Jackson Flynn	DATE 12/10/2015	<b>VICOR</b> <small>swd</small>	
UNLESS OTHERWISE SPECIFIED DIMENSIONS ARE MM (INCH)		<b>PICOR PI33xx, PI34xx, ZVS BUCK REGULATOR, 18VIN</b>	
TOLERANCES ARE: DECIMALS ANGLES X.XX (X.XX) = +0.25 (0.01) ±1° X.XXX (X.XXX) = ±0.127 (0.005)		SIZE <b>D</b>	CAGE CODE <b>67131</b>
THIRD ANGLE PROJECTION 		DWG NO <b>43461</b>	REV <b>#3</b>
DO NOT SCALE DRAWING		SCALE 12:1	SHEET 2 OF 3


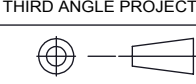
VICOR CONFIDENTIAL  
 THIS DOCUMENT AND THE DATA DISCLOSED HEREIN OR  
 HEREIN IS NOT TO BE REPRODUCED, USED OR  
 DISCLOSED IN ANY MANNER OR IN PART TO ANYONE WITHOUT  
 THE PERMISSION OF VICOR CORP.

REVISIONS			
REV	DESCRIPTION	DATE	APPROVED
	SEE SHEET 1		

PIN 1



TOP THROUGH VIEW OF PRODUCT

DRAWN BY Jackson Flynn	DATE 12/10/2015	 <b>VICOR</b> <small>swd</small>	
UNLESS OTHERWISE SPECIFIED DIMENSIONS ARE MM (INCH)		<b>PICOR PI33xx, PI34xx, ZVS BUCK REGULATOR, 18VIN</b>	
TOLERANCES ARE: DECIMALS ANGLES X.XX (X.XX) = +0.25 (0.01) ±1° X.XXX (X.XXX) = ±0.127 (0.005)		SIZE <b>D</b>	CAGE CODE <b>67131</b>
THIRD ANGLE PROJECTION 		DWG NO <b>43461</b>	REV <b>#3</b>
DO NOT SCALE DRAWING		SCALE 12:1	SHEET 3 OF 3