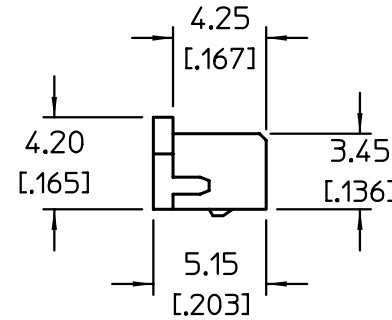
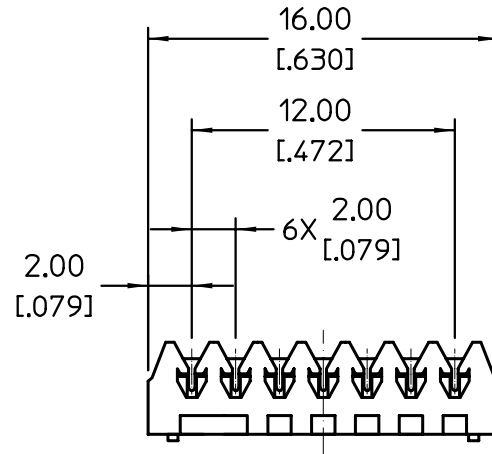


VICOR CONFIDENTIAL

THIS DOCUMENT AND THE DATA DISCLOSED HEREIN OR HEREWITH IS NOT TO BE REPRODUCED, USED, OR DISCLOSED IN WHOLE OR IN PART TO ANYONE WITHOUT PERMISSION OF VICOR CORP.

REV.	DESCRIPTION	DATE	APPROVED
01	RELSD- E010390	8/13/01	CFH



NOTES:

1. MATERIALS & FINISH:


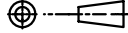
- A. CONTACT: PHOSPHOR BRONZE, COPPER-UNDERCOATED, TIN/LEAD PLATED.
- B. HOUSING: NYLON 66, UL94V-0.

2. SPECIFICATIONS:

- CURRENT RATING: 1.0A AC, DC (AWG #26)
- VOLTAGE RATING: 100V AC, DC
- TEMPERATURE RANGE: -25°C TO +85°C. (INCLUDING TEMPERATURE RISE IN APPLYING ELECTRICAL CURRENT)
- CONTACT RESISTANCE: INITIAL VALUE/ 10 mOHM MAX. (AFTER ENVIRONMENTAL TESTING/ 20 mOHM MAX.)
- INSULATION RESISTANCE: 1,000 MOHMS MIN.
- WITHSTANDING VOLTAGE: 800V AC/MINUTE
- APPLICABLE WIRE: AWG #26; UL1571, 1061; CONDUCTOR/7 STRANDS, TIN-COATED; INSULATION O.D./0.9 TO 1.0mm[.035" TO .039"]

3. DIMENSIONS ARE IN MM [IN].

4. FOR ADDITIONAL SPECS & DIMENSIONS- CONTACT THE VENDOR & CHECK DATA SHEET.

DRAWN BY <i>RCM</i>		DATE 8/14/01			
<small>UNLESS OTHERWISE SPECIFIED DIMENSIONS ARE IN INCHES- TOLERANCES ARE:</small> <small>FRACTIONS DECIMALS ANGLES</small> <small>±1/64 .XX ±.01 ° ±1'</small> <small> .XXX ±.005</small>					
THIRD ANGLE PROJECTION		SIZE	FSCM NO.	DWG NO	REV
		B	67131	22988	01
DO NOT SCALE DRAWING		SCALE	2X	SHEET 1 OF 1	