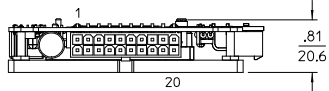
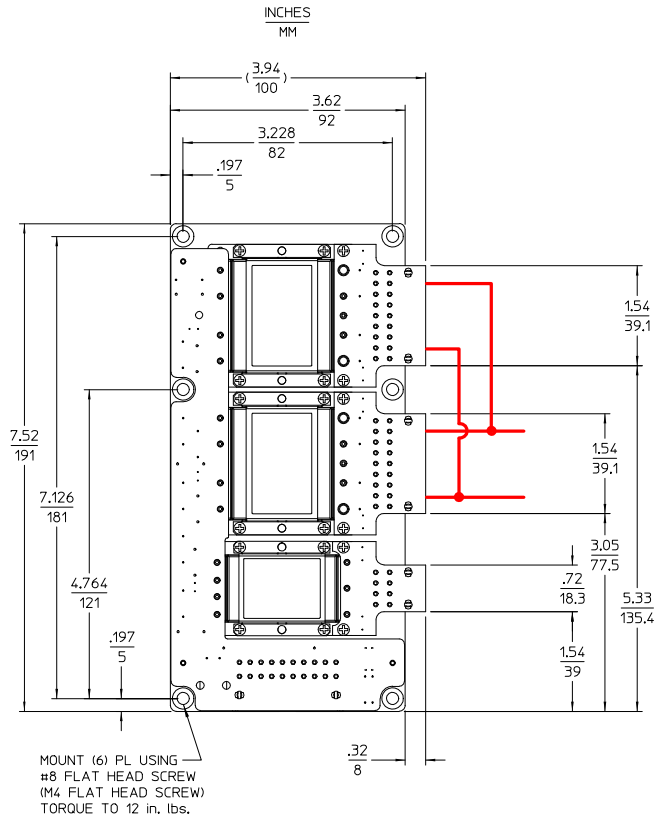


VICOR CONFIDENTIAL
 THIS DOCUMENT AND THE DATA DISCLOSED
 HEREIN OR HEREWITH IS NOT TO BE REPRODUCED,
 USED, OR DISCLOSED IN WHOLE OR IN PART
 TO ANYONE WITHOUT PERMISSION OF VICOR CORP.

REV.	DESCRIPTION	DATE	APPROV.
SEE SHEET 1			

CONFIGURATION 'E'

DUAL OUTPUT
 WITH PLUGMATES

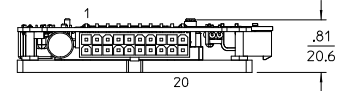
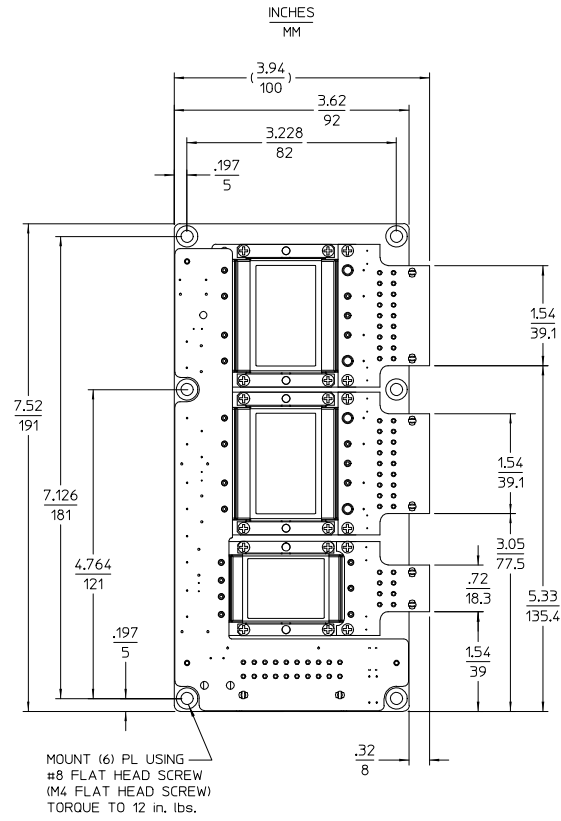


CUSTOMER MUST WIRE OUTPUTS OF
 CONVERTERS IN PARALLEL AS SHOWN
 REFER TO DATA SHEET FOR DETAILS

TOLERANCES: .XX = .02 .XXX = .010
 MM = .5 MM = .25

CONFIGURATION 'E'

TRIPLE OUTPUT
 WITH PLUGMATES



TOLERANCES: .XX = .02 .XXX = .010
 MM = .5 MM = .25

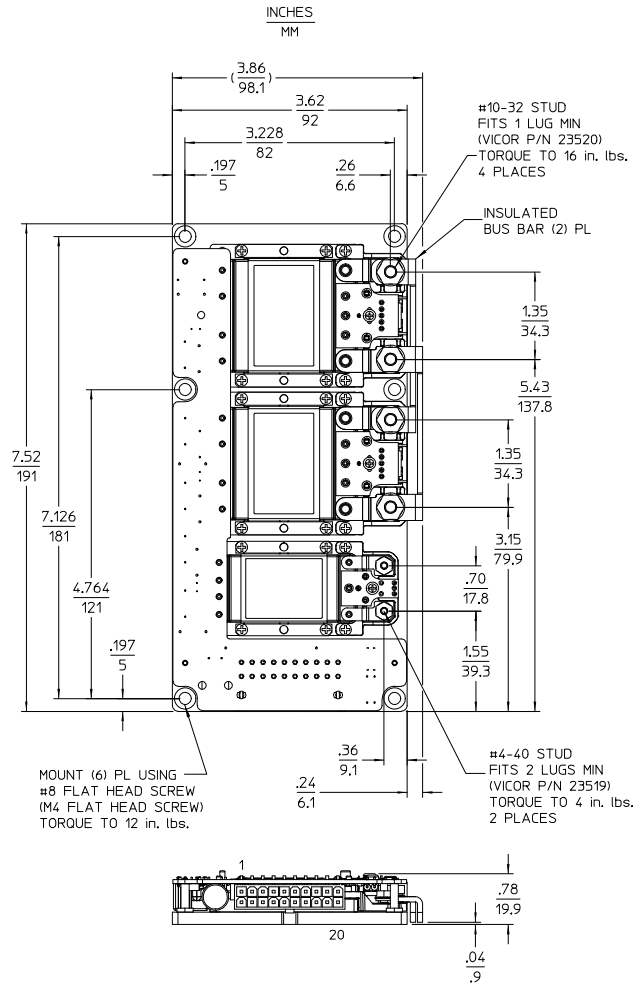
DRAWN BY A. ARDMAN	DATE 09/12/02			
<small>UNLESS OTHERWISE SPECIFIED DIMENSIONS ARE IN INCHES TOLERANCES ARE: FRACTIONS DECIMALS ANGLES .XX .XX .XX .XX .XX .XX .XX .XX .XX</small>				
THIRD ANGLE PROJECTION	SIZE D	PSCH NO. 67131	DWG NO. 24826	REV 2
DO NOT SCALE DRAWING	SCALE 1:1	SHEET 2 OF 2		

THIS DOCUMENT AND THE DATA DISCLOSED HEREIN OR HEREWITH IS NOT TO BE REPRODUCED, USED, OR DISCLOSED IN WHOLE OR IN PART TO ANYONE WITHOUT PERMISSION OF VICOR CORP.

REV.	DESCRIPTION	DATE	APVD
1	RELEASED PER E0430434	PEI 09/20/04	FN
2	REVSD PER E053078	AK 06/22/05	FN

CONFIGURATION 'E'

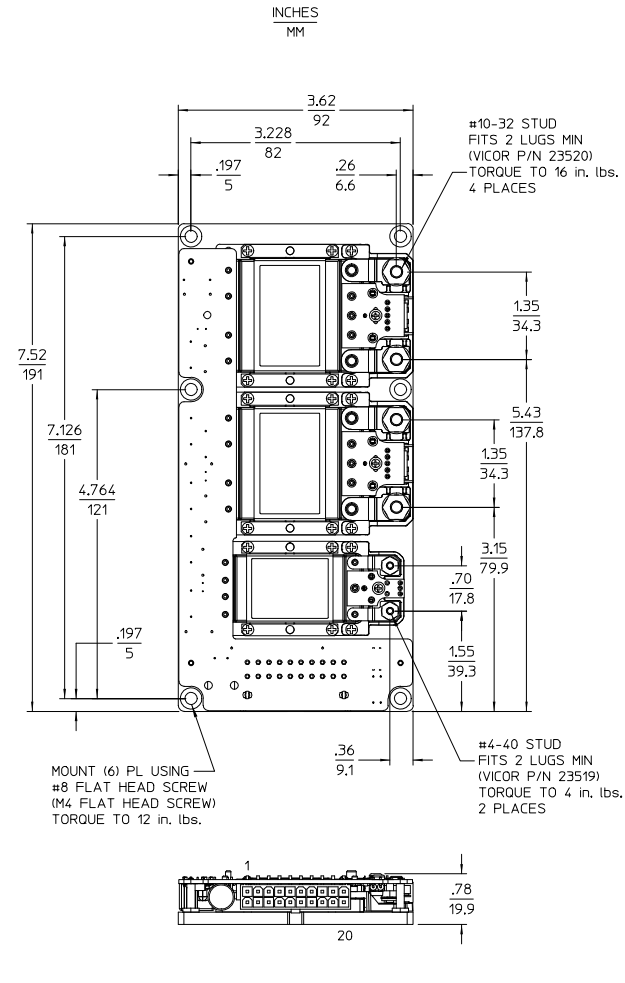
DUAL OUTPUT
WITH LUGMATES



TOLERANCES: .XX = .02 .XXX = .010
MM = .5 MM = .25

CONFIGURATION 'E'

TRIPLE OUTPUT
WITH LUGMATES



TOLERANCES: .XX = .02 .XXX = .010
MM = .5 MM = .25

DRAWN BY A. ARDMAN	DATE 09/12/02				
<small>UNLESS OTHERWISE SPECIFIED DIMENSIONS ARE IN INCHES TOLERANCES ARE: FRACTIONS DECIMALS ANGLES +1/64 .001 .01 .015</small>					
<small>THIRD ANGLE PROJECTION</small>		<small>SIZE</small> D	<small>PSCH NO.</small> 67131	<small>DWG NO.</small> 24826	<small>REV</small> 2
<small>DO NOT SCALE DRAWING</small>		<small>SCALE</small> 1:1	<small>SHEET</small> 1 OF 2		