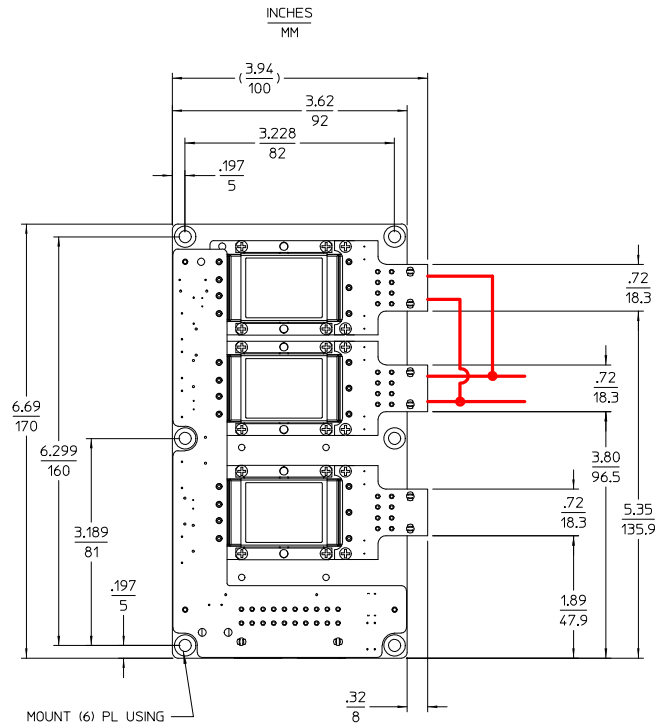


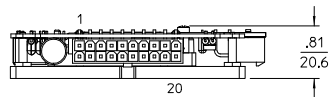
REV.	DESCRIPTION	DATE	APVD
SEE SHEET 1			

CONFIGURATION 'C'

DUAL OUTPUT
WITH PLUGMATES



MOUNT (6) PL USING
#8 FLAT HEAD SCREW
(M4 FLAT HEAD SCREW)
TORQUE TO 12 in. lbs.

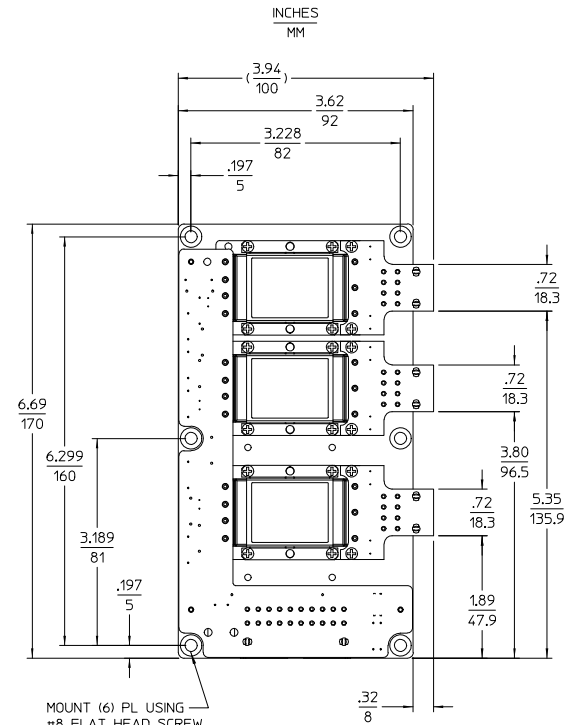


CUSTOMER MUST WIRE OUTPUTS OF
CONVERTERS IN PARALLEL AS SHOWN
REFER TO DATA SHEET FOR DETAILS

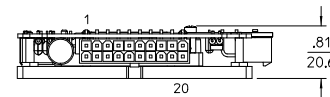
TOLERANCES: .XX = .02 .XXX = .010
MM .5 MM .25

CONFIGURATION 'C'

TRIPLE OUTPUT
WITH PLUGMATES



MOUNT (6) PL USING
#8 FLAT HEAD SCREW
(M4 FLAT HEAD SCREW)
TORQUE TO 12 in. lbs.



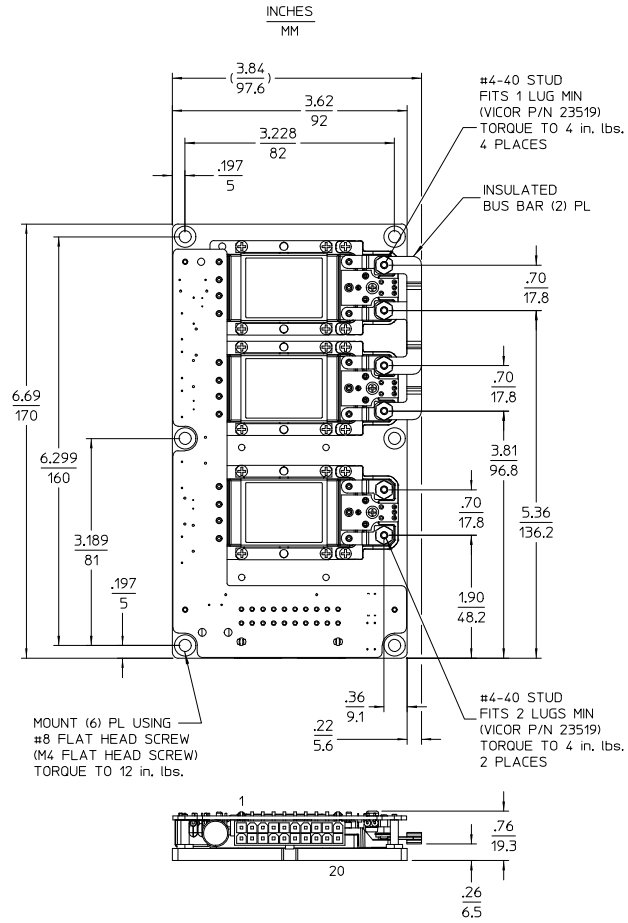
TOLERANCES: .XX = .02 .XXX = .010
MM .5 MM .25

DRAWN BY A. KOTLAR	DATE 09/12/02				
<small>UNLESS OTHERWISE SPECIFIED DIMENSIONS ARE IN INCHES TOLERANCES ARE: FRACTIONS DECIMALS ANGLES XXX +.01 .XX +.005 ° ±1°</small>					
THIRD ANGLE PROJECTION		SIZE D	PSCH NO. 67131	DWG NO. 24824	REV 2
DO NOT SCALE DRAWING		SCALE 1:1	SHEET 2		OF 2

REV.	DESCRIPTION	DATE	APVD
1	RELEASED PER E0430434	PEI 09/20/04	FN
2	REVSD PER E053078	AK 06/20/05	FN

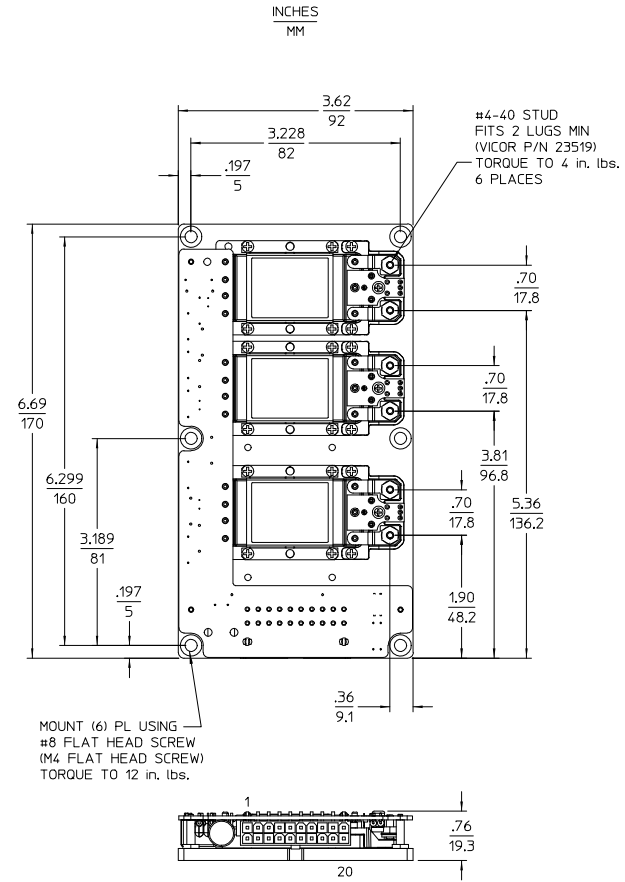
CONFIGURATION 'C'

DUAL OUTPUT WITH LUGMATES



CONFIGURATION 'C'

TRIPLE OUTPUT WITH LUGMATES



DRAWN BY A. RIZMAR	DATE 09/12/02			
<small>UNLESS OTHERWISE SPECIFIED DIMENSIONS ARE IN INCHES TOLERANCES ARE FRACTIONS DECIMALS ANGLES</small> .XX = .01 .XXX = .005 ° = 10'				
THIRD ANGLE PROJECTION	SIZE D	PSCH NO. 67131	DWG NO. 24824	REV 2
DO NOT SCALE DRAWING	SCALE 1:1	SHEET 1 OF 2		