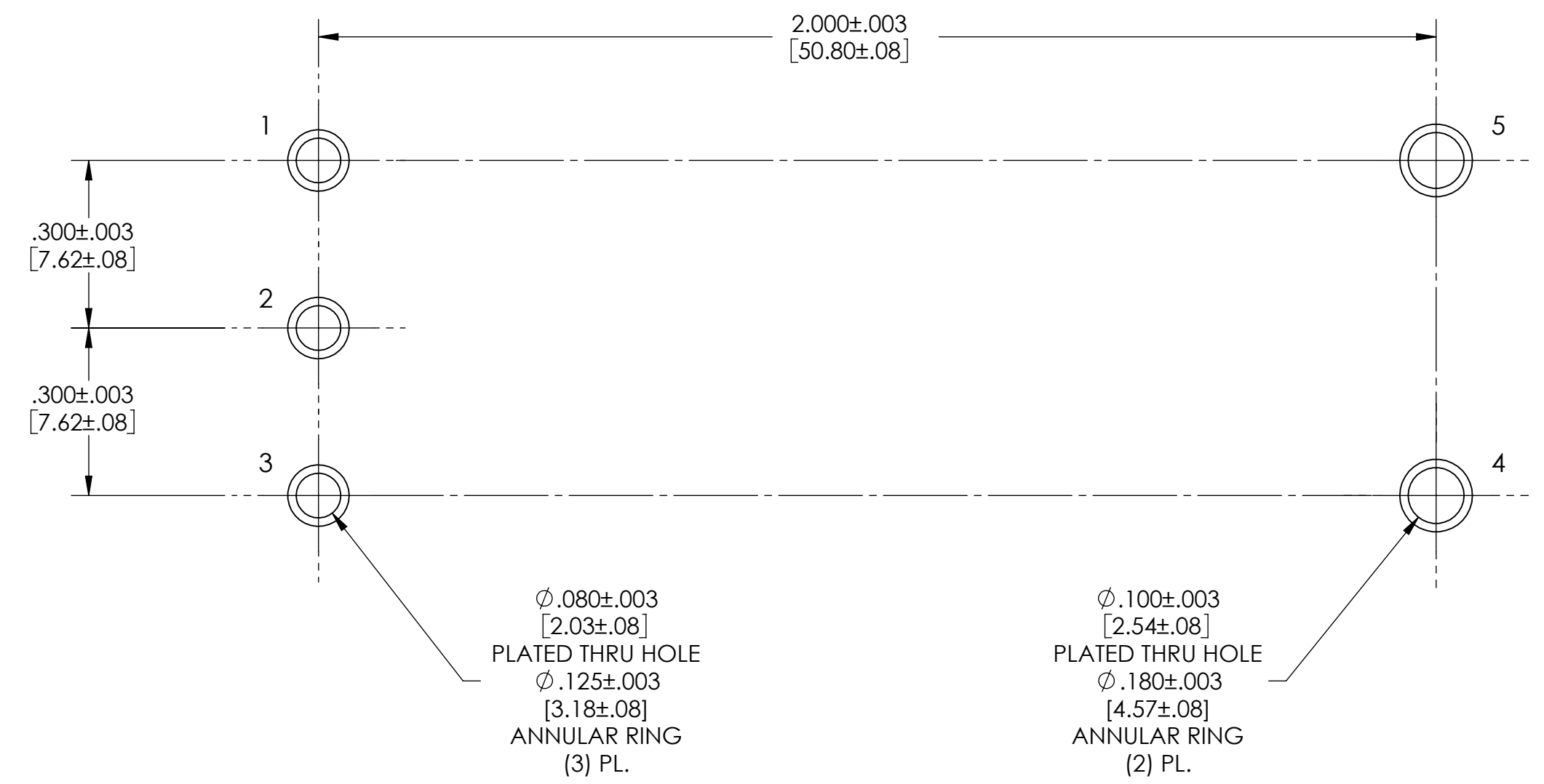
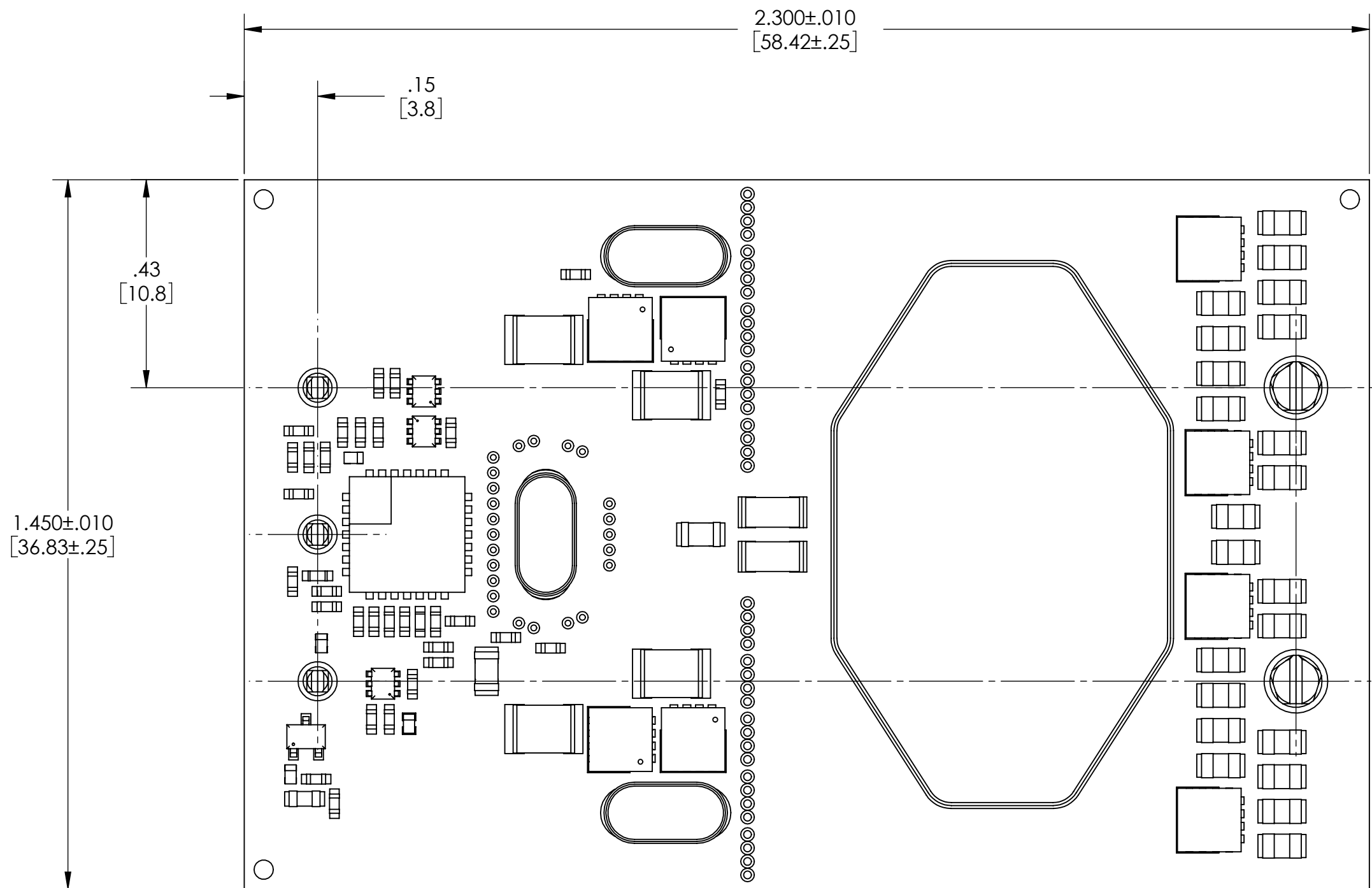


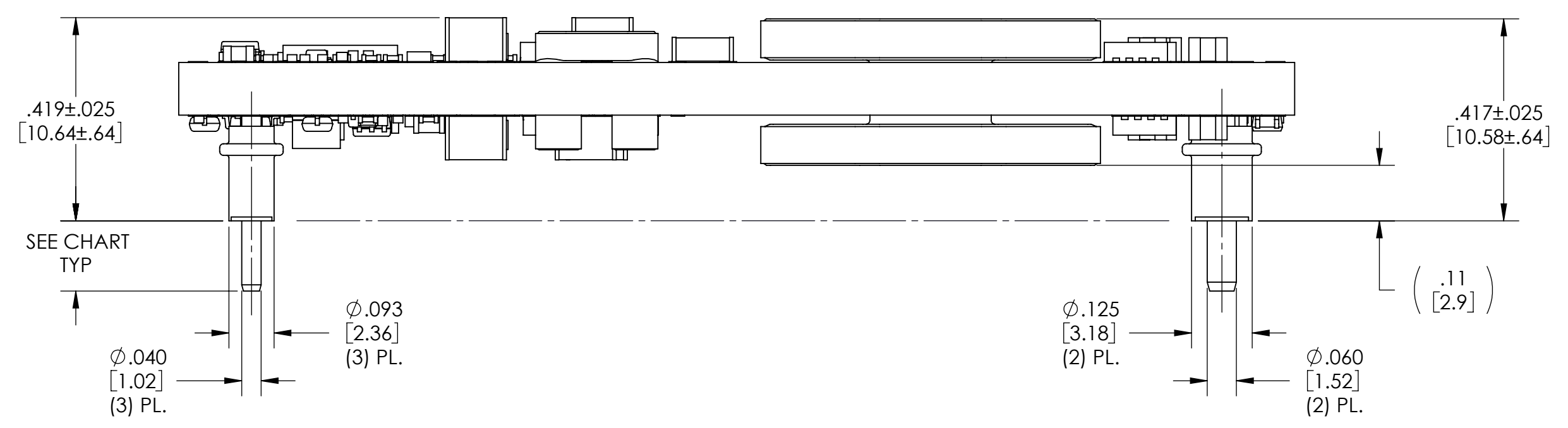
VICOR CONFIDENTIAL
 THIS DOCUMENT AND THE DATA DISCLOSED HEREIN OR
 HEREWITH IS NOT TO BE REPRODUCED, USED OR
 DISCLOSED IN WHOLE OR IN PART TO ANYONE WITHOUT
 THE PERMISSION OF VICOR CORP.

| REV. | DESCRIPTION | DATE | APPROVED |
|------|---------------------|----------|----------|
| 1 | RELEASE PER E120283 | 03/27/12 | YZ |
| 2 | REVISED PER E120361 | 04/24/12 | REJH |



RECOMMENDED LAND PATTERN
 (COMPONENT SIDE SHOWN)

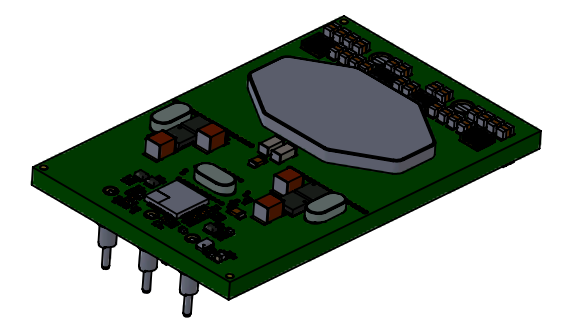
| PIN | DESIGNATION |
|-----|-------------|
| 1 | +IN |
| 2 | EN |
| 3 | -IN |
| 4 | -OUT |
| 5 | +OUT |



OPEN FRAME

| DESIGNATOR | LENGTH |
|------------|-------------|
| 1 | .145 [3.68] |
| 2 | .210 [5.33] |
| 3 | .180 [4.57] |

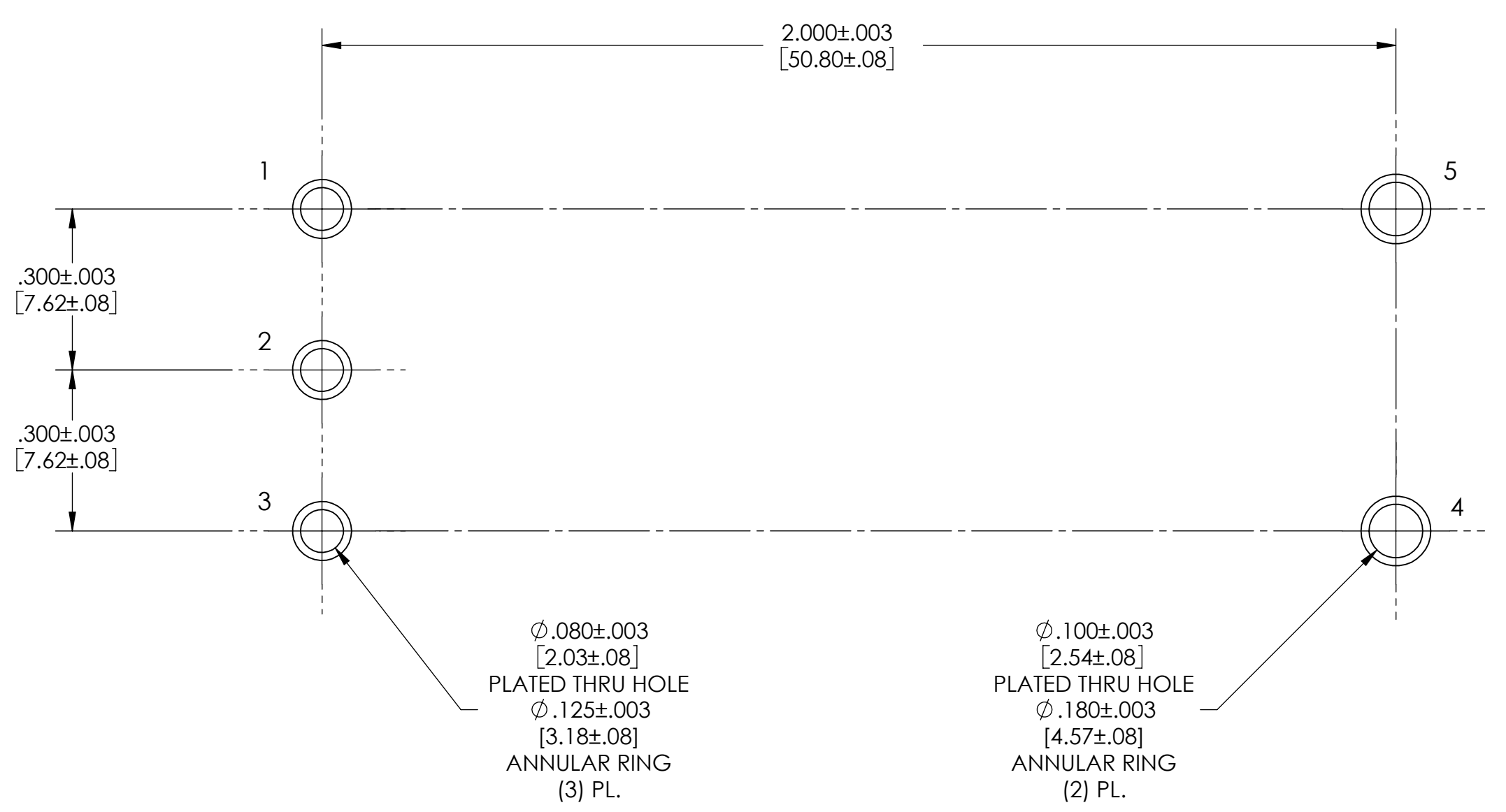
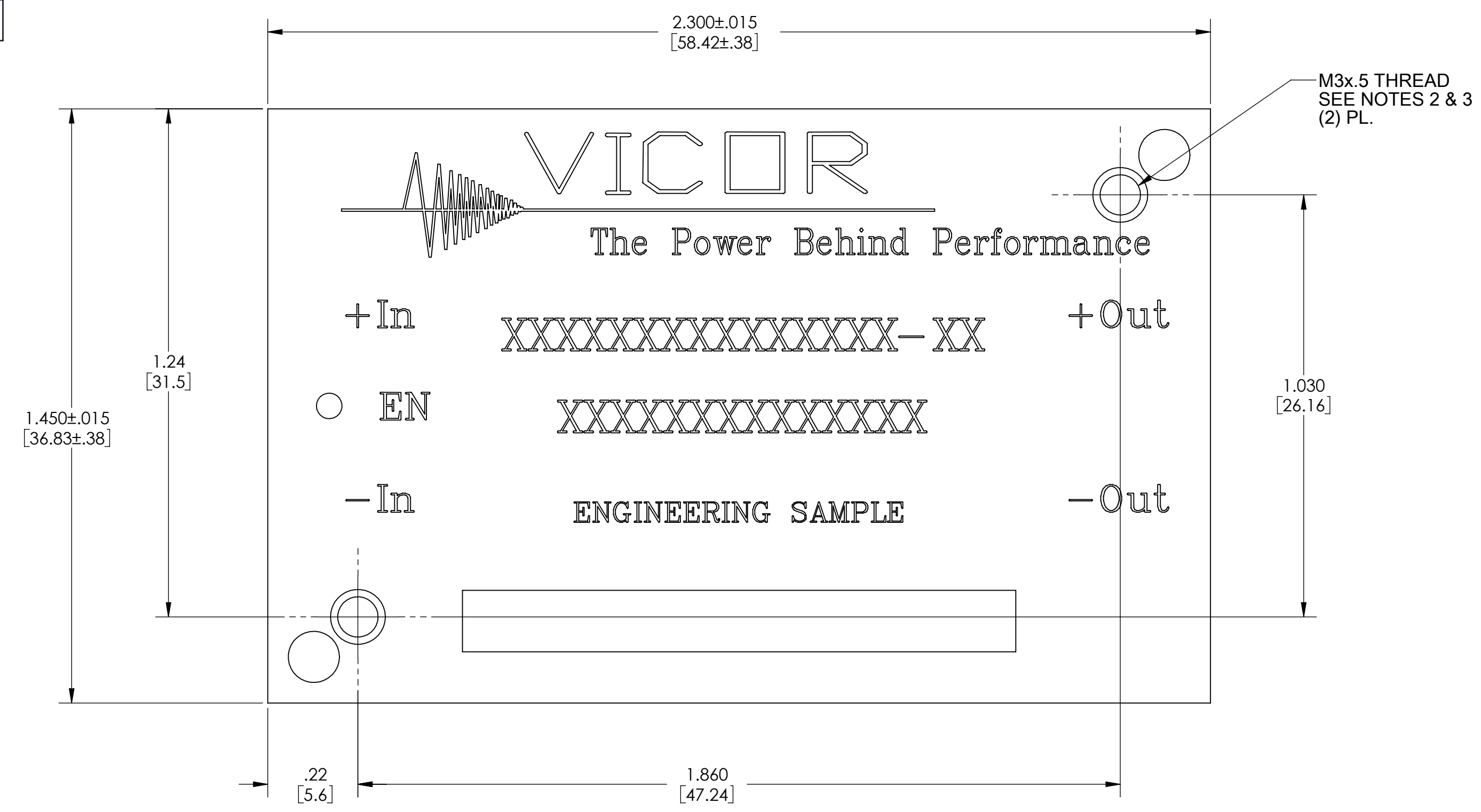
NOTES:
 1. RoHS COMPLIANT PER CST-0001 LATEST REVISION.



| | | | |
|--|--------------------|---|---------------------------|
| DRAWN BY R.E.J Hickey | DATE 03/14/2012 | VICOR <small>SWD</small> | |
| UNLESS OTHERWISE SPECIFIED DIMENSIONS ARE: INCH / [MM] | | OUTL DWG, 1/4 BRICK, (3oz) K=1/5 (D) | |
| TOLERANCES ARE: DECIMALS X.XX (X.X) = ±0.01 (0.25) X.XXX (X.XXX) = ±0.005 (0.127) | ANGLES ±1° | SIZE D | CAGE CODE 67131 |
| THIRD ANGLE PROJECTION | SCALE 4:1 | DWG NO 38439 | REV 2 |
| DO NOT SCALE DRAWING | | SHEET 1 OF 2 | |

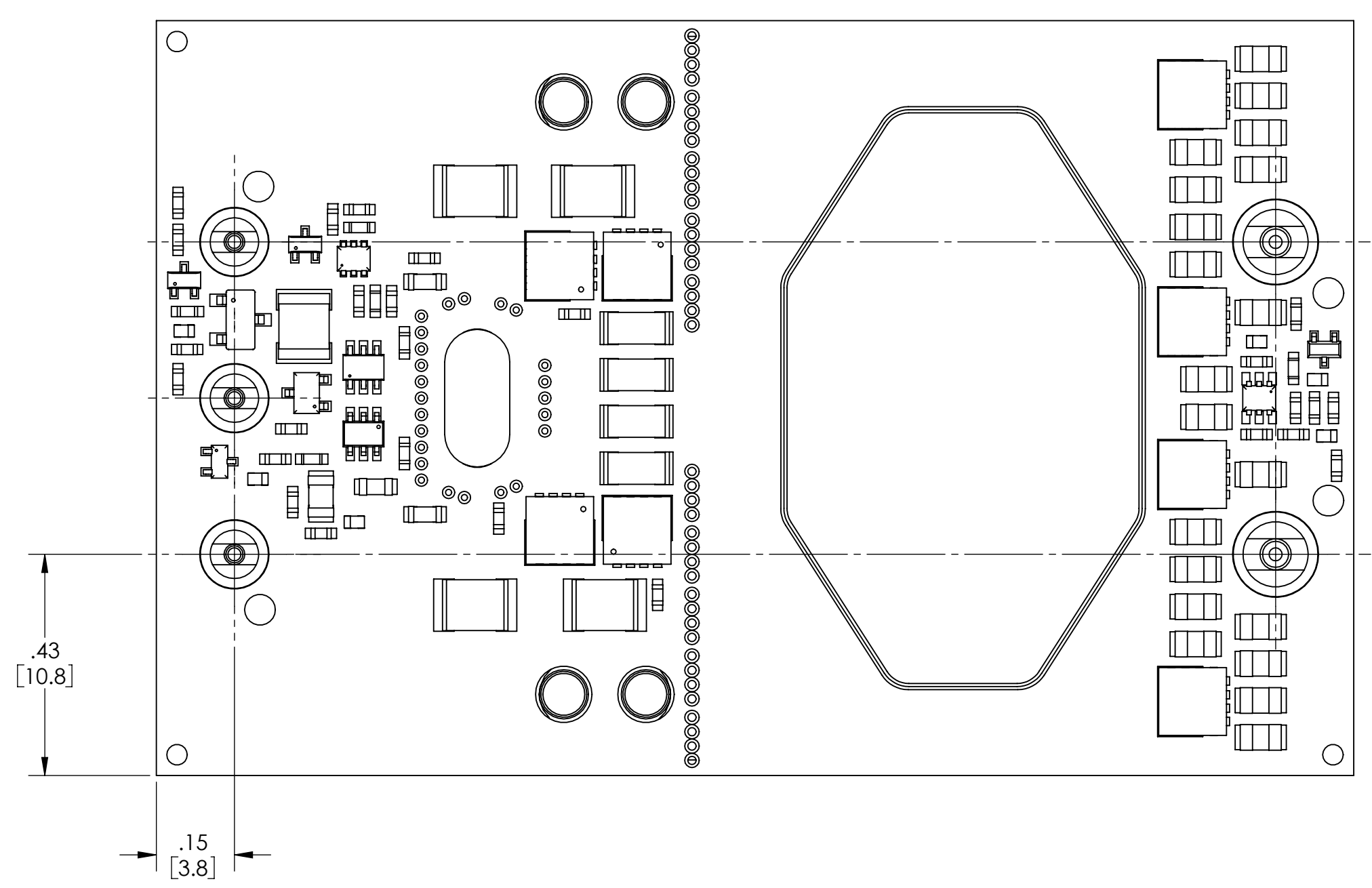
VICOR CONFIDENTIAL
THIS DOCUMENT AND THE DATA DISCLOSED HEREIN OR HEREWITH IS NOT TO BE REPRODUCED, USED OR DISCLOSED IN WHOLE OR IN PART TO ANYONE WITHOUT THE PERMISSION OF VICOR CORP.

| REVISIONS | | | |
|-----------|-------------|------|----------|
| REV | DESCRIPTION | DATE | APPROVED |
| | SEE SHEET 1 | | |



RECOMMENDED LAND PATTERN
(COMPONENT SIDE SHOWN)

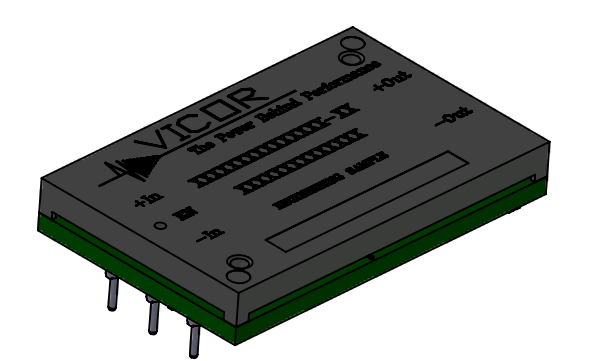
| PIN | DESIGNATION |
|-----|-------------|
| 1 | +IN |
| 2 | EN |
| 3 | -IN |
| 4 | -OUT |
| 5 | +OUT |



BASEPLATE

| DESIGNATOR | LENGTH |
|------------|-------------|
| 1 | .145 [3.68] |
| 2 | .210 [5.33] |
| 3 | .180 [4.57] |

- NOTES:
- RoHS COMPLIANT PER CST-0001 LATEST REVISION.
 - M3 SCREWS USED FOR ATTACHMENT MUST NOT PROTRUDE MORE THAN .100 [2.54] INTO THE BASEPLATE.
 - APPLIED TORQUE PER SCREW SHOULD NOT EXCEED 4in-lb [.45Nm].



| | | | |
|---|--------------------------------------|---|---------------------------|
| DRAWN BY R.E.J Hickey | DATE 03/14/2012 | VICOR <small>swd</small> | |
| UNLESS OTHERWISE SPECIFIED DIMENSIONS ARE: INCH / (MM) | | OUTL DWG, 1/4 BRICK, (3oz) K=1/5 (D) | |
| TOLERANCES ARE: DECIMALS XXX (X.X) = +0.01 (0.25) | ANGLES XXX (X.X) = ±0.005 (0.127) | SIZE D | CAGE CODE 67131 |
| THIRD ANGLE PROJECTION | SCALE 4:1 | DWG NO 38439 | REV 2 |
| DO NOT SCALE DRAWING | | SHEET 2 OF 2 | |