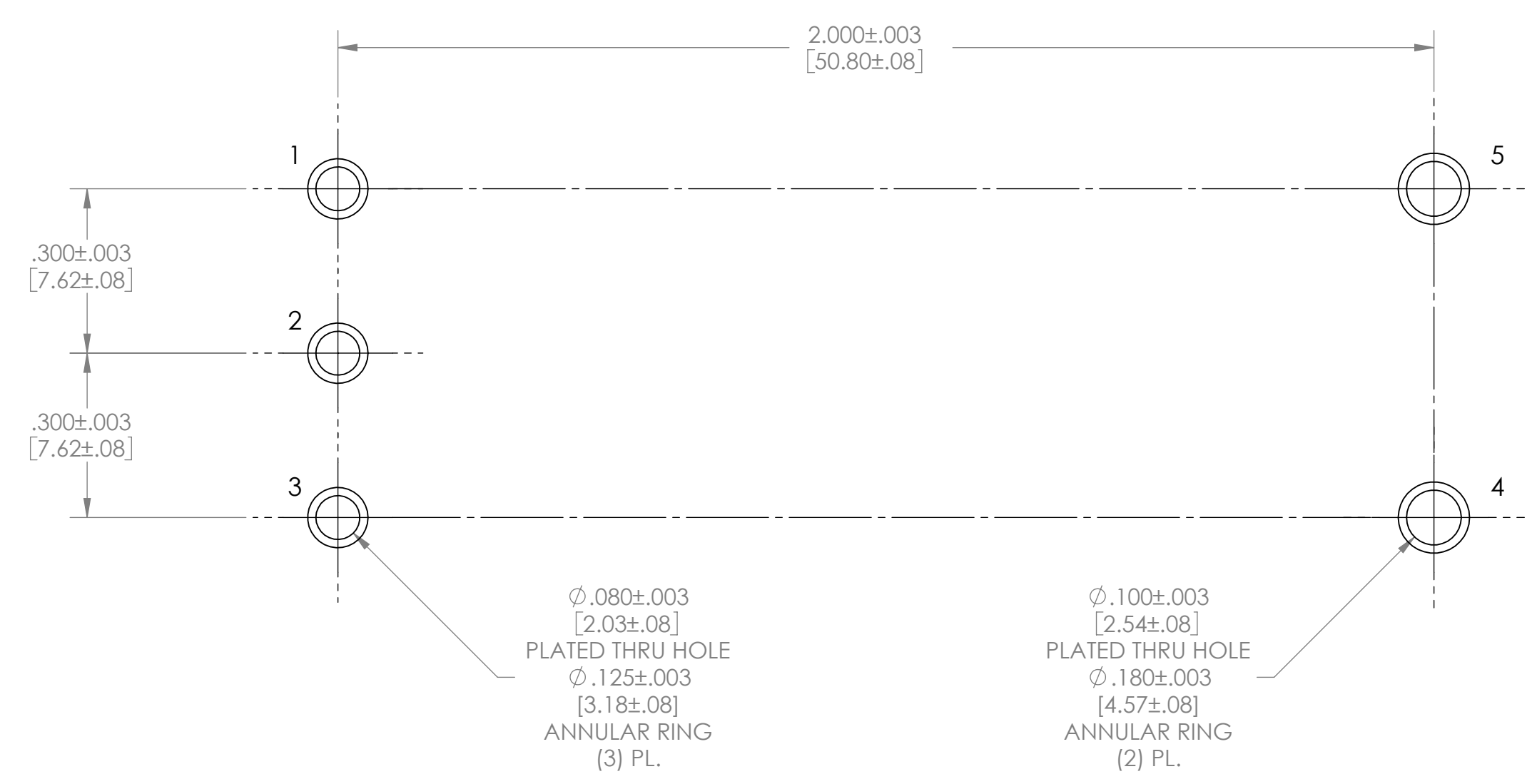
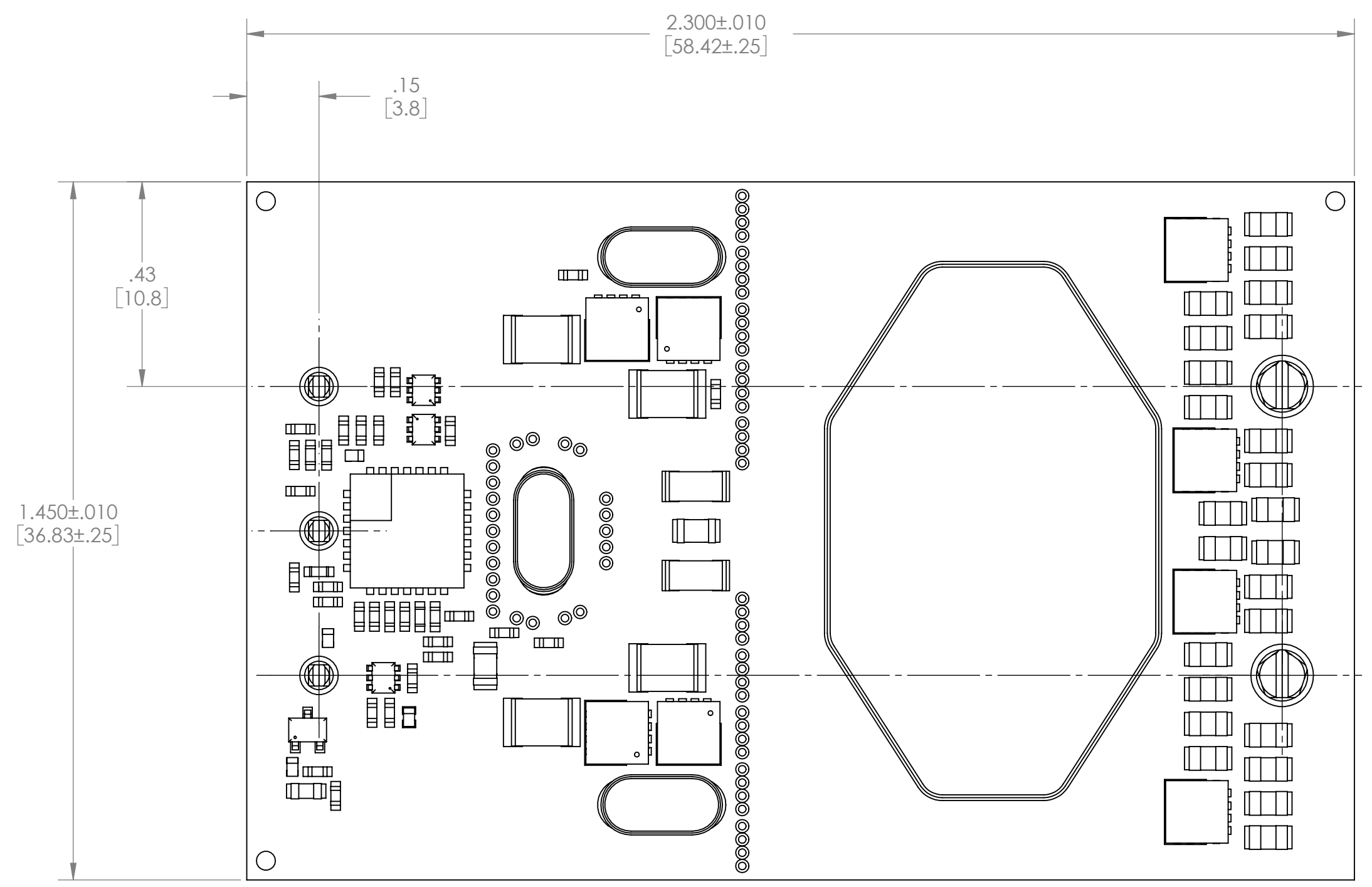


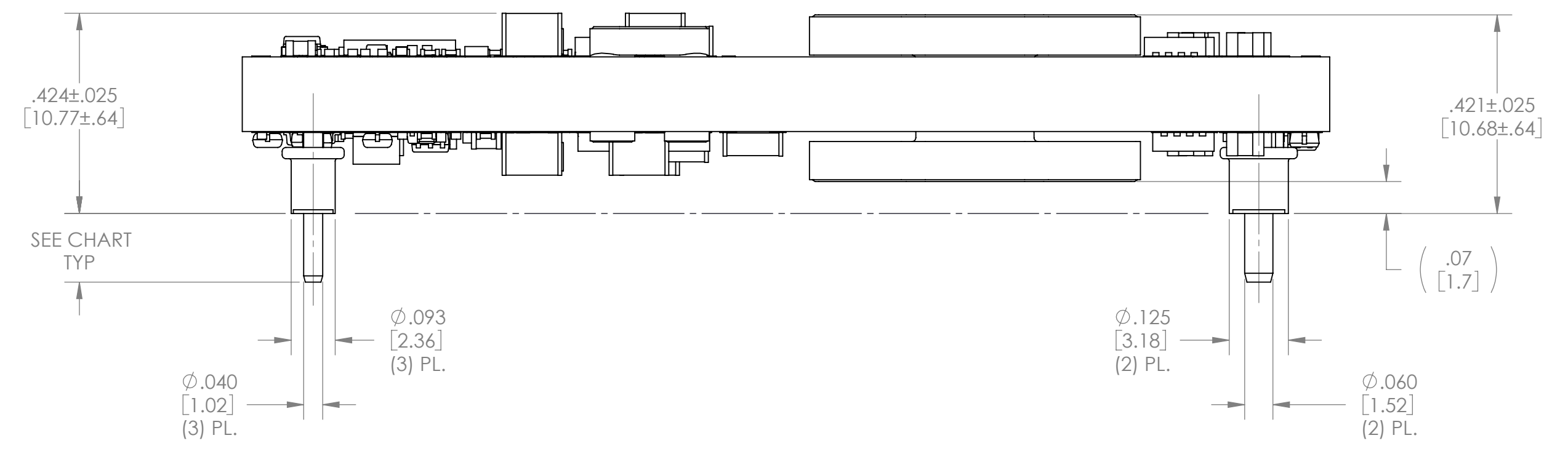
VICOR CONFIDENTIAL
 THIS DOCUMENT AND THE DATA DISCLOSED HEREIN OR HEREWITH IS NOT TO BE REPRODUCED, USED OR DISCLOSED IN WHOLE OR IN PART TO ANYONE WITHOUT THE PERMISSION OF VICOR CORP.

REV.	DESCRIPTION	DATE	APPROVED
1	RELEASED PER E120284 GCK	03/28/12	NZ
2	REVISED PER E120361 VSS	04/24/12	REJH



RECOMMENDED LAND PATTERN
 (COMPONENT SIDE SHOWN)

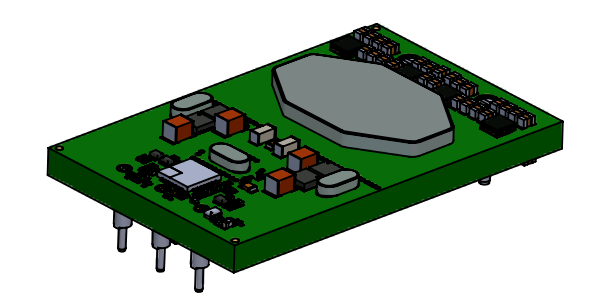
PIN	DESIGNATION
1	+ IN
2	EN
3	- IN
4	- OUT
5	+ OUT



OPEN FRAME

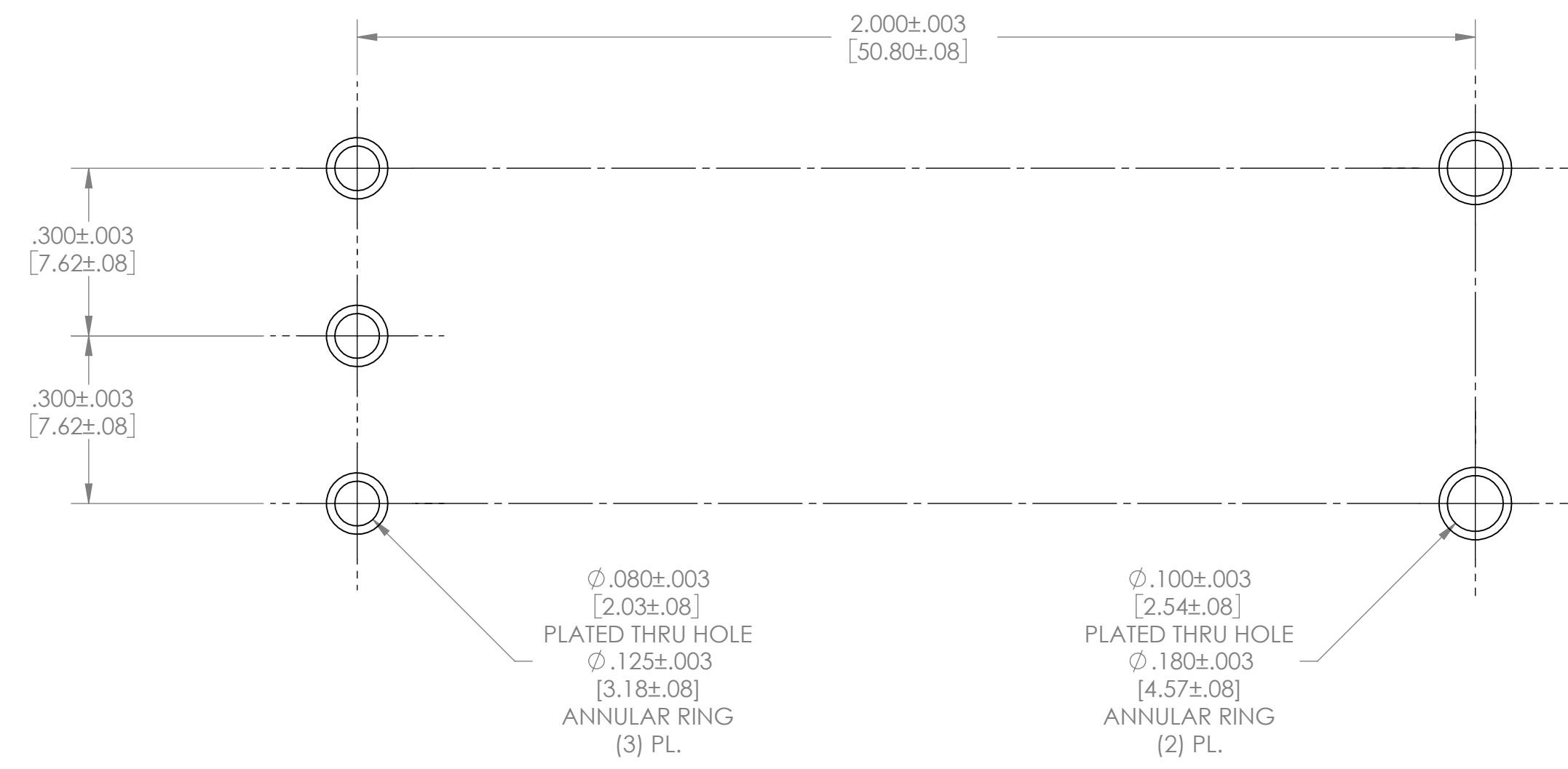
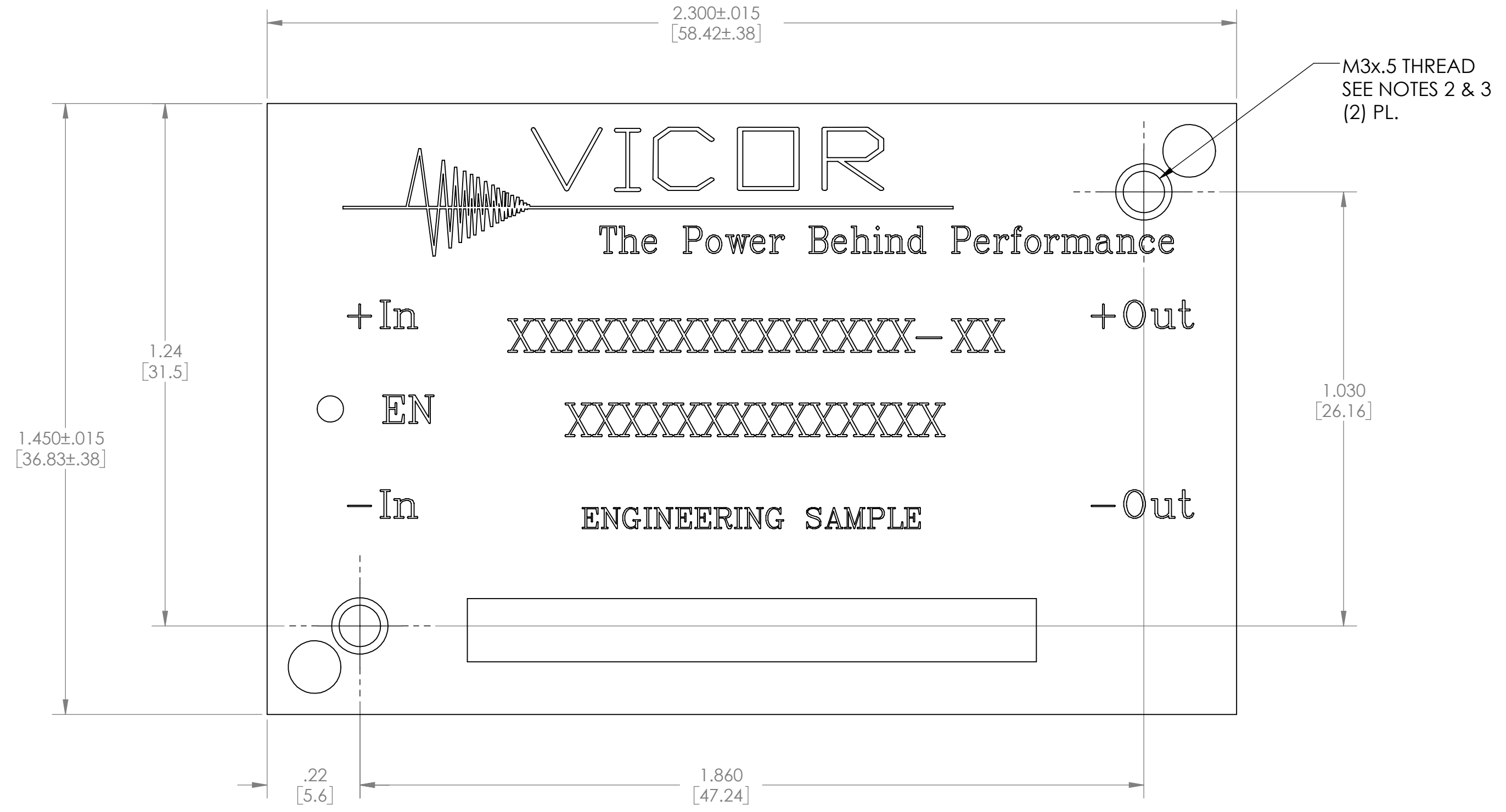
DESIGNATOR	LENGTH
1	.145 [3.68]
2	.210 [5.33]
3	.180 [4.57]

NOTES:
 1. RoHS COMPLIANT PER CST-0001 LATEST REVISION.



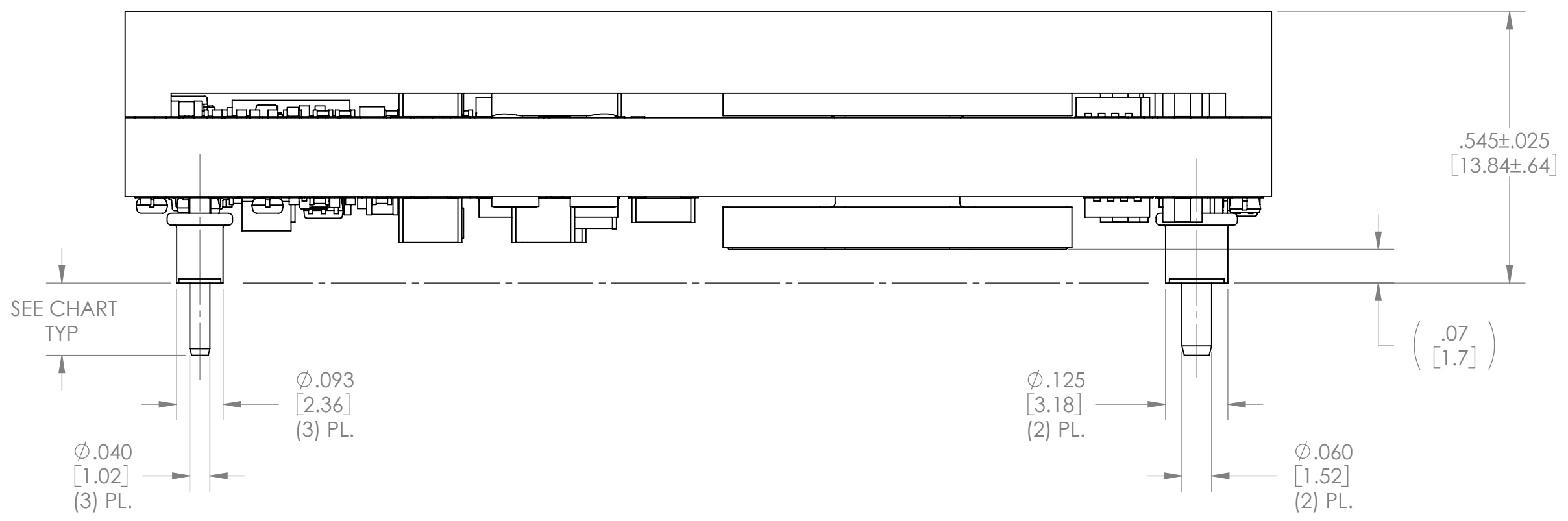
DRAWN BY R.E.J. Hickey	DATE 02/28/2012	VICOR <small>swd</small>	
UNLESS OTHERWISE SPECIFIED DIMENSIONS ARE: INCH / [MM]		OUTL DWG 1/4 BRICK (2oz) K=1/5 (30LYR) (A)	
TOLERANCES ARE: DECIMALS X.XX (X.X) = +0.01 (0.25) X.XXX (X.XXX) = ±0.005 (0.127)	ANGLES ±1°	SIZE D	CAGE CODE 67131
THIRD ANGLE PROJECTION 	SCALE 4:1	DWG NO 38325	REV 2
DO NOT SCALE DRAWING		SHEET 1 OF 2	

REVISIONS			
REV	DESCRIPTION	DATE	APPROVED
	SEE SHEET 1		



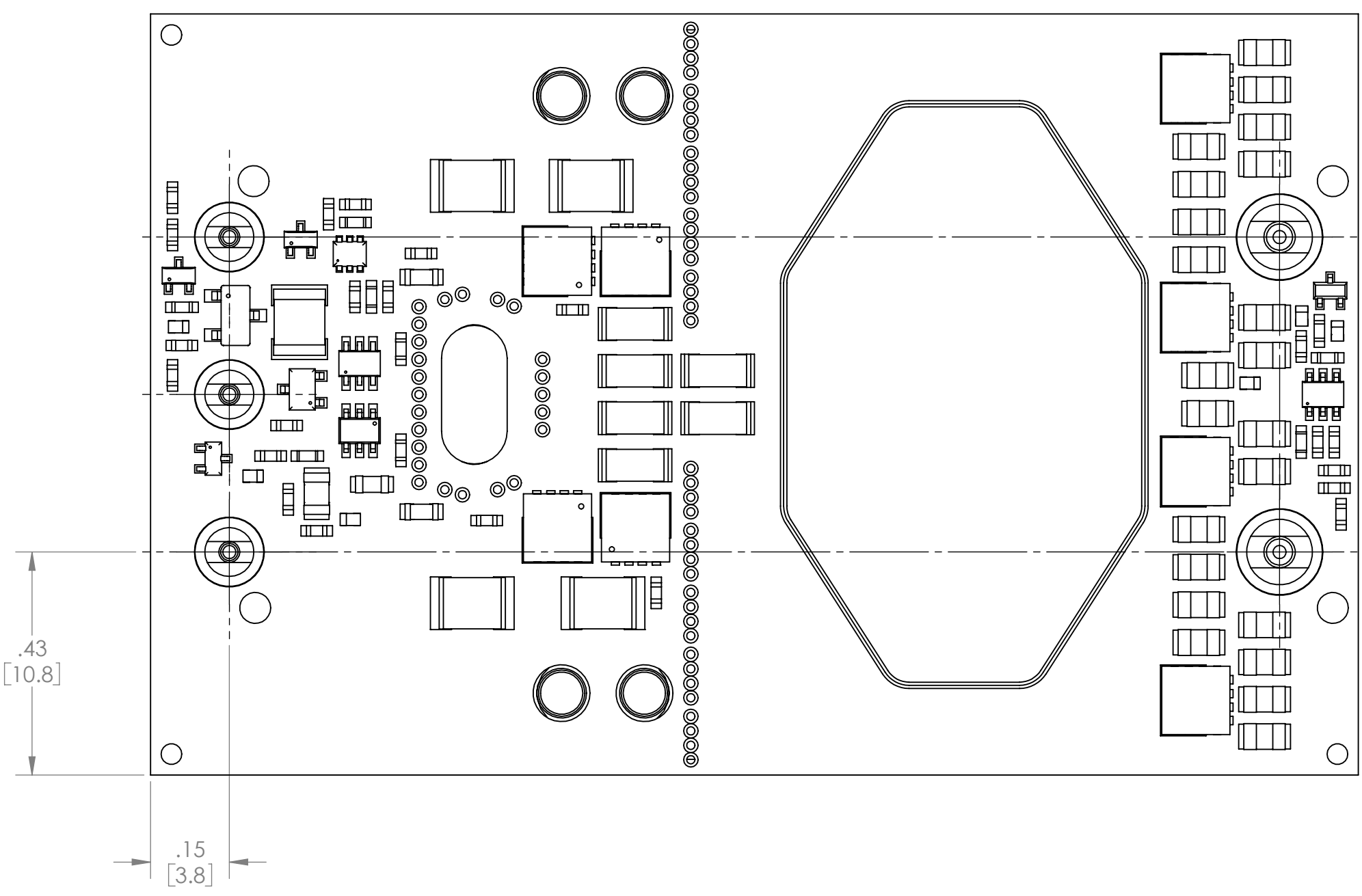
RECOMMENDED LAND PATTERN
(COMPONENT SIDE SHOWN)

PIN	DESIGNATION
1	+IN
2	EN
3	-IN
4	-OUT
5	+OUT

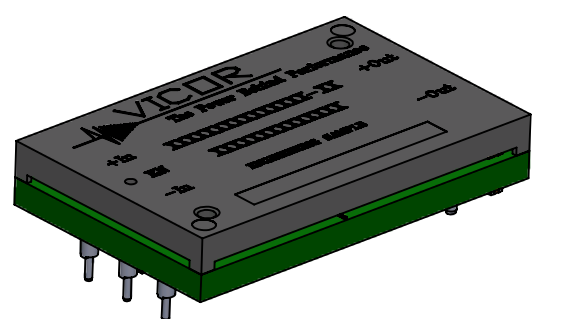


BASEPLATE

DESIGNATOR	LENGTH
1	.145 [3.68]
2	.210 [5.33]
3	.180 [4.57]



- NOTES:
- RoHS COMPLIANT PER CST-0001 LATEST REVISION.
 - M3 SCREWS USED FOR ATTACHMENT MUST NOT PROTRUDE MORE THAN .100 [2.54] INTO THE BASEPLATE.
 - APPLIED TORQUE PER SCREW SHOULD NOT EXCEED 4in-lb [.45Nm].



DRAWN BY R.E.J. Hickey	DATE 02/28/2012	VICOR <small>SWD</small>	
UNLESS OTHERWISE SPECIFIED DIMENSIONS ARE : INCH / [MM]		OUTL DWG 1/4 BRICK (2oz) K=1/5 (30LYR) (A)	
TOLERANCES ARE: DECIMALS XXX (X.X) = +0.01 (0.25) X.XXX (X.XX) = ±0.005 (0.127)	ANGLES ±1°	SIZE D	CAGE CODE 67131
THIRD ANGLE PROJECTION 	SCALE 4:1	DWG NO 38325	REV 2
DO NOT SCALE DRAWING		SHEET 2 OF 2	