

8

7

6

5

4

3

2

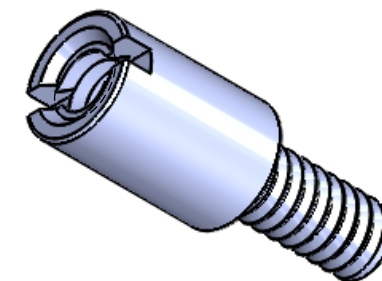
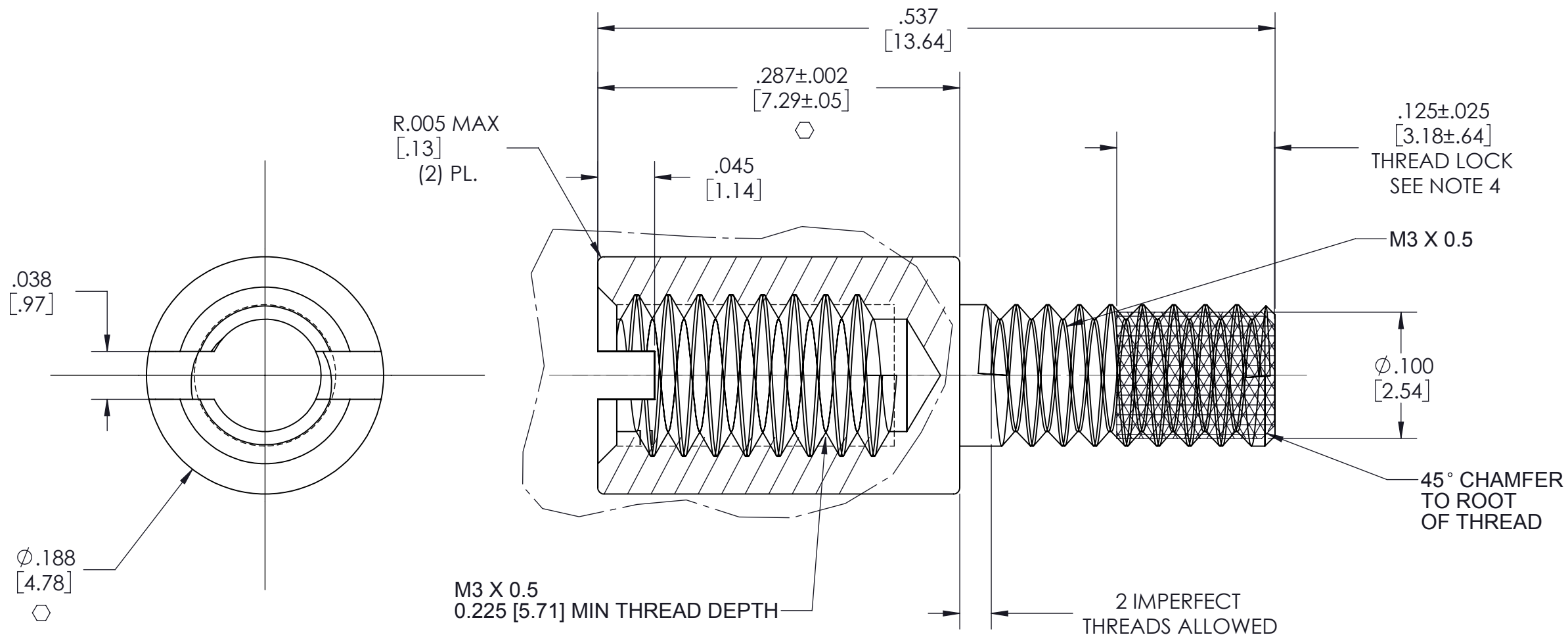
1

VICOR CONFIDENTIAL

THIS DOCUMENT AND THE DATA DISCLOSED HEREIN OR HEREWITH IS NOT TO BE REPRODUCED, USED OR DISCLOSED IN WHOLE OR IN PART TO ANYONE WITHOUT THE PERMISSION OF VICOR CORP.

REVISIONS

REV	DESCRIPTION	DATE	APPROVED
1	RELEASED PER E080703 SA	4/08/08	REJH
2	REVISE PER E100944 KUK	07/22/10	DCS



NOTES:

- 1. MATERIAL: 300 SERIES STAINLESS STEEL PER AISI.
- 2. REMOVE ALL BURRS AND SHARP EDGES.
- 3. CLEAR FINISH. RoHS COMPLIANT LEAD FREE AND CHROMIUM FREE PER CST-0001 LATEST REVISION.
- 4. MACHINE APPLY LOCTITE DRI-LOC 204 OR EQUIVALENT TO THREADS AS SHOWN.
- 5. ◻ DENOTES CRITICAL CHARACTERISTIC FOR LOT INSPECTION.
- 6. KIT P/N 34719 AND 34710.
- 7. DIMENSIONS ARE INCHES ONLY.

DRAWN	DATE
R.E.J.HICKEY	03/26/08



MATERIAL	UNLESS OTHERWISE SPECIFIED DIMENSIONS ARE INCH [MM] TOLERANCES ARE: DECIMALS      ANGLES X.XX [X.X] = ±0.01 [0.25]      ±1° X.XXX [X.XX] = ±0.005 [0.127]
FINISH	
THIRD ANGLE PROJECTION	
DO NOT SCALE DRAWING	

**STANDOFF .287 LONG MALE - FEMALE**

SIZE	CAGE CODE	DWG NO	REV
<b>B</b>	<b>67131</b>	<b>34703</b>	<b>2</b>
SCALE 10 : 1		SHEET 1 OF 1	

8

7

6

5

4

3

2

1