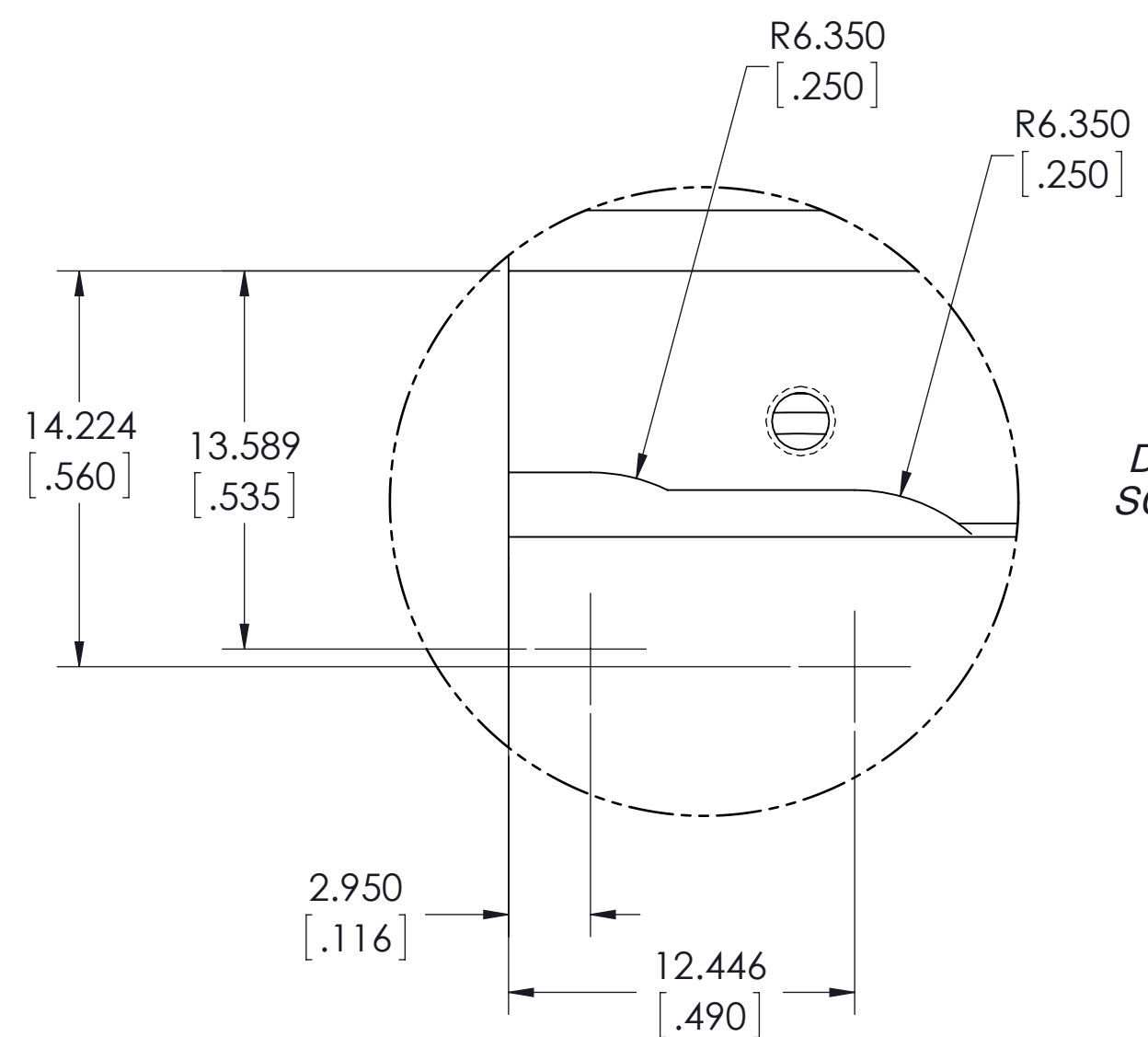
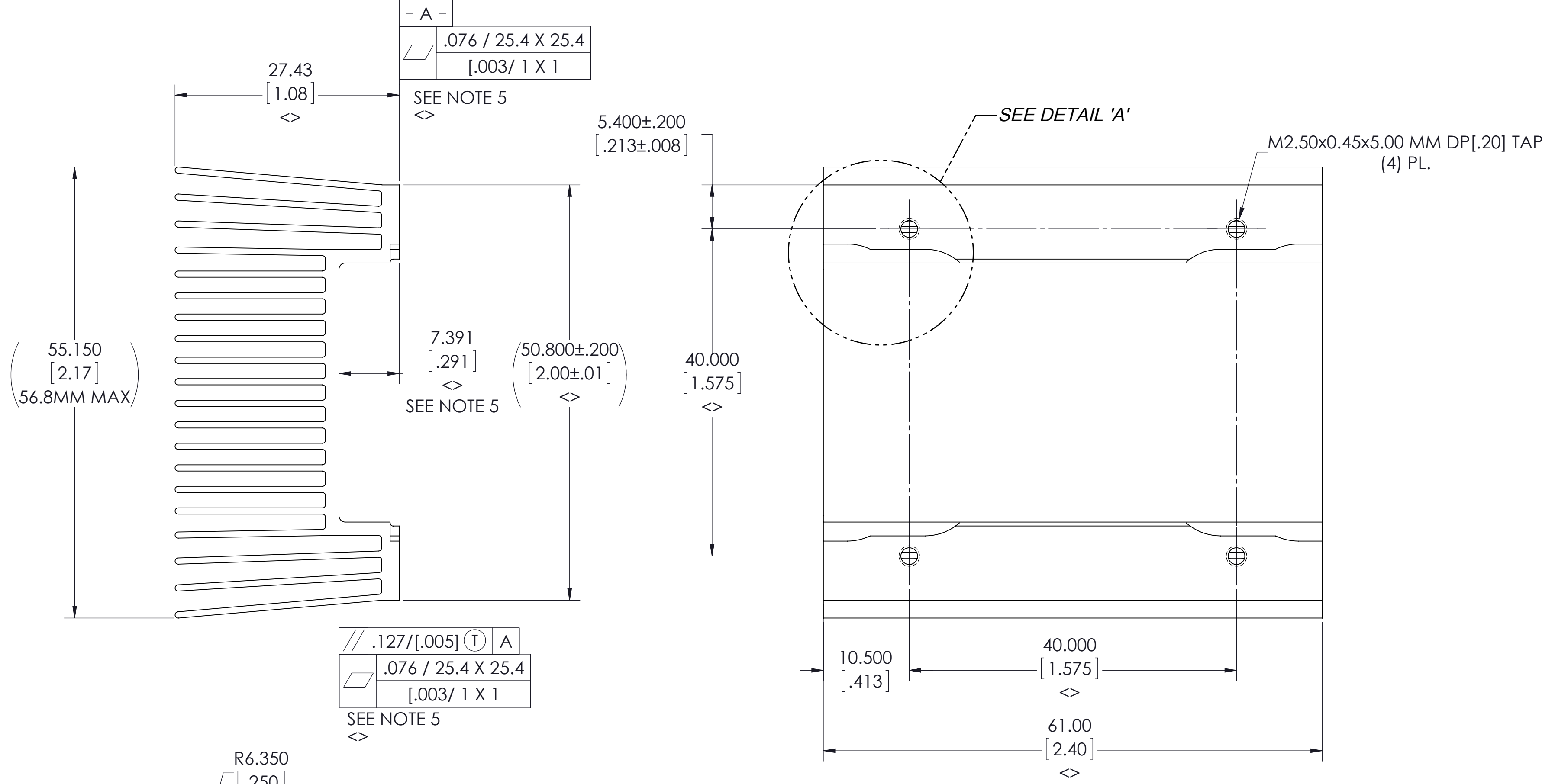


VICOR CONFIDENTIAL
THIS DOCUMENT AND THE DATA DISCLOSED HEREIN OR
HEREWITH IS NOT TO BE REPRODUCED, USED OR
DISCLOSED IN WHOLE OR IN PART TO ANYONE WITHOUT
THE PERMISSION OF VICOR CORP.

REV.	DESCRIPTION	INTL	DATE	APVD
1	RELEASE PER E141082	GCK	09/11/14	PM

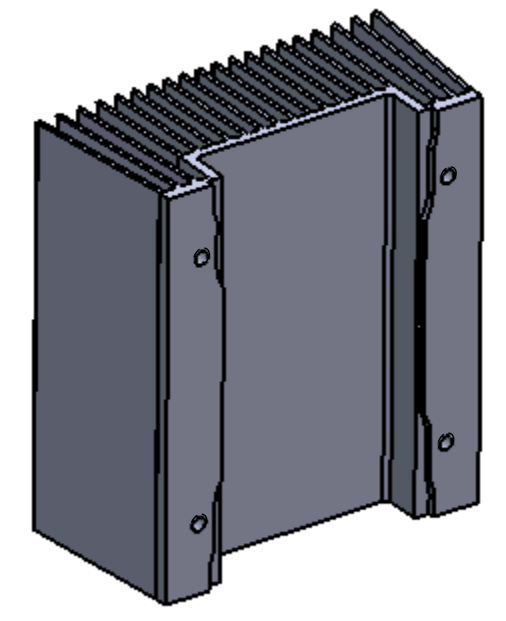
F
E
D
C
B
A

F
E
D
C
B
A



DETAIL A
SCALE 4 : 1
(4) PL.

- NOTES:
1. CLEAR FINISH, RoHS COMPLIANT PER CST-0001, LATEST REVISION PER A.) CHROMIUM FREE, OR B.) TRIVALENT CHROMIUM IN ACCORDANCE WITH MIL-DTL-5541, TYPE II, CLASS 1A OR 3. SEE CST-0003 FOR TYPES OF AVAILABLE FINISHES.
 2. SEE VICOR P/N 41231 FOR EXTRUSION PROFILE.
 3. REMOVE ALL BURRS AND BREAK ALL SHARP EDGES.
 4. <> DENOTES CRITICAL CHARACTERISTIC FOR LOT INSPECTION.
 5. IF NECESSARY, EXTRUDE OVERSIZE AND MACHINE BASE AND INSIDE SURFACE TO ACHIEVE DIMENSION.



DRAWN BY Abby Taylor	DATE 07/24/2014	SWD			
UNLESS OTHERWISE SPECIFIED DIMENSIONS ARE MM (INCH)		HEATSINK, TOP, 2361 CHIP			
TOLERANCES ARE: DECIMALS ANGLES X.XX [X.XX] = ±0.25 [0.01] ±1° X.XXX [X.XXX] = ±0.127 [0.005]		SIZE C	CAGE CODE 67131	DWG NO 41233	REV 1
THIRD ANGLE PROJECTION 		SCALE 2:1	SHEET 1 OF 1		