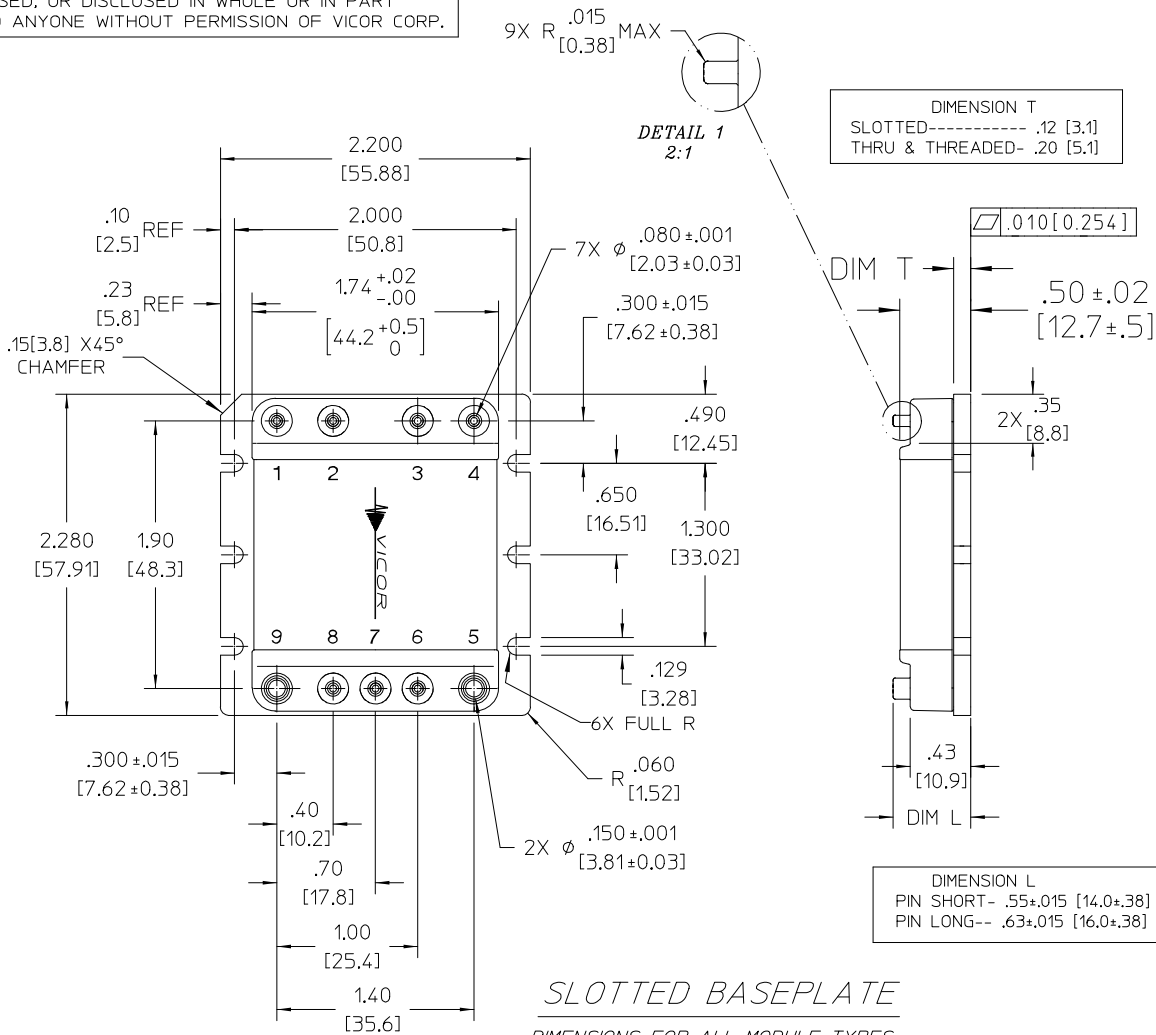


**VICOR CONFIDENTIAL**

THIS DOCUMENT AND THE DATA DISCLOSED HEREIN OR HEREWITH IS NOT TO BE REPRODUCED, USED, OR DISCLOSED IN WHOLE OR IN PART TO ANYONE WITHOUT PERMISSION OF VICOR CORP.



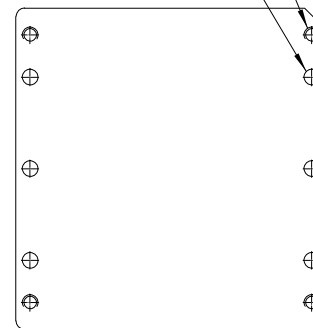
- NOTES:  
 1. MATERIAL:  
 BASE: 6000 SERIES ALUMINUM  
 COVER: LCP, ALUMINUM 3003 H14.  
 PINS: RoHS PINS GOLD PLATE 30 MICRO INCH MIN; NON-RoHS PINS TIN/LEAD 90/10 BRIGHT.  
 2. DIMENSIONS AND VALUES IN BRACKETS ARE METRIC.

REV.	DESCRIPTION	DATE	APPROVED	
6	REVISED PER E072864	JS	11/20/07	REJH
7	REVISED PER E080065	JS	01-11-08	REJH
8	REVISED PER E080431	SA	3/3/08	REJH
9	REVISED PER E090313	GCK	02/25/09	AR
10	REVISED PER E090517	AR	03/16/09	REJH
11	REVISED PER E101318	AR	10/28/10	REJH

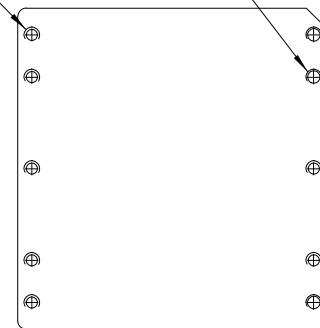
4X- ONE IN EACH CORNER (RESERVED FOR VICOR ACCESSORIES)

6X #30 DRILL THRU (.1285 DIA)

6X #4-40 UNC-2B TAP THRU



THRU HOLE BASEPLATE



THREADED BASEPLATE

DRAWN BY <b>RCM</b>	DATE <b>3/20/02</b>			
UNLESS OTHERWISE SPECIFIED DIMENSIONS ARE IN INCHES- TOLERANCES ARE: FRACTIONS DECIMALS ANGLES ±1/64 .XX ±.01 ±1° .XXX ±.005				
THIRD ANGLE PROJECTION 	SIZE <b>B</b>	FSCM NO. <b>67131</b>	DWG NO. <b>25006</b>	REV <b>11</b>
DO NOT SCALE DRAWING	SCALE 1:1	SHEET 1 OF 1		