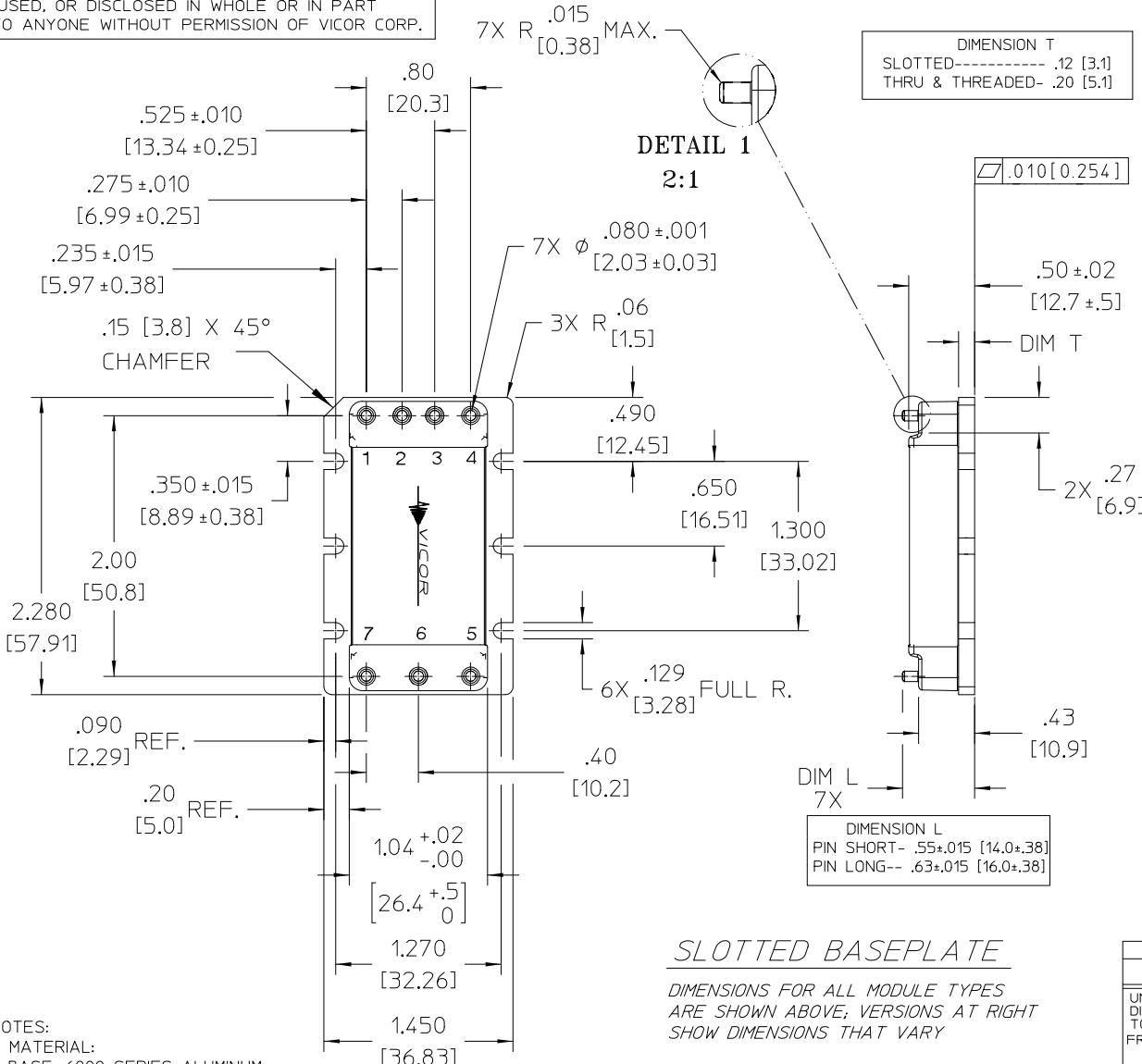
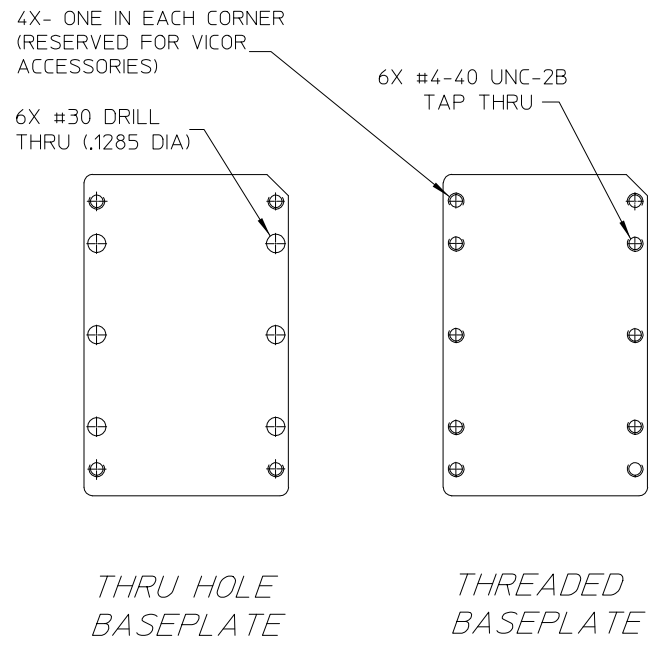


**VICOR CONFIDENTIAL**

THIS DOCUMENT AND THE DATA DISCLOSED HEREIN OR HERewith IS NOT TO BE REPRODUCED, USED, OR DISCLOSED IN WHOLE OR IN PART TO ANYONE WITHOUT PERMISSION OF VICOR CORP.



REV.	DESCRIPTION	DATE	APPROVED
2	REVISED PER E0430390	BW 8/25/04	RLT
3	REVISED PER E0530146	LEK 05/11/05	RLT
4	REVISED PER E070413	YWT 03/06/07	EF
5	REVISED PER E072864	JS 11/20/07	REJH
6	REVISED PER E080431	SA 3/3/08	REJH
7	REVISED PER E090313	GCK 02/25/09	AR
8	REVISED PER E101318	AR 10/28/10	REJH



NOTES:  
1. MATERIAL:  
BASE: 6000 SERIES ALUMINUM  
COVER: LCP, ALUMINUM 3003 H14.  
PINS: RoHS PINS GOLD PLATE 30 MICRO INCH MIN; NON-RoHS PINS TIN/LEAD 90/10 BRIGHT.  
2. DIMENSIONS AND VALUES IN BRACKETS ARE METRIC.

DRAWN BY <i>D. CVINAR</i>		DATE <i>3/20/02</i>			
UNLESS OTHERWISE SPECIFIED DIMENSIONS ARE IN INCHES- TOLERANCES ARE: FRACTIONS DECIMALS ANGLES ±1/64 .XX= ±.01 ±1° .XXX=±.005					
THIRD ANGLE PROJECTION 		SIZE <b>B</b>	FSCM NO. <b>67131</b>	DWG NO <b>25004</b>	REV <b>8</b>
DO NOT SCALE DRAWING		SCALE 1:1	SHEET <b>Det@#1</b> NIL		