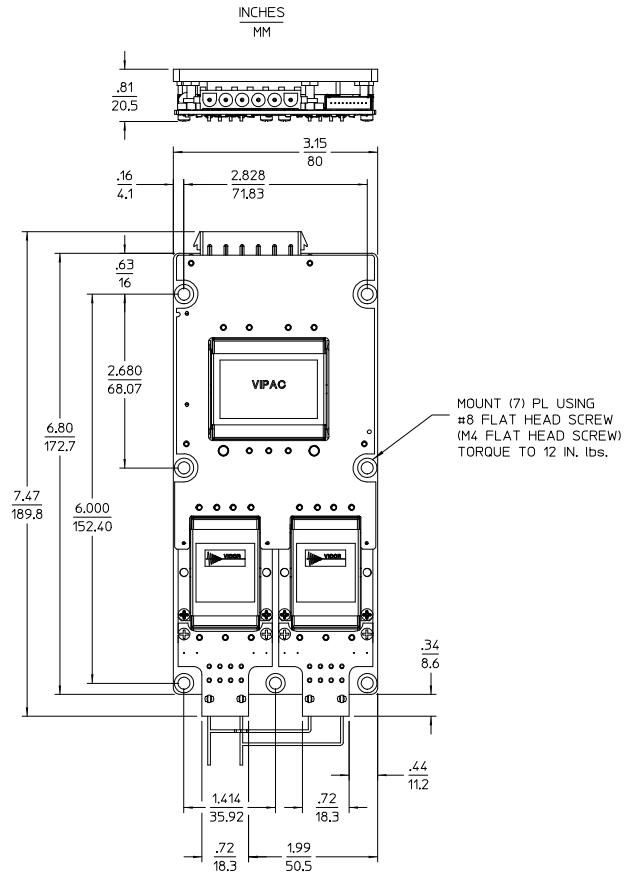


REV.	DESCRIPTION	DATE	APVD
SEE SHEET 1			

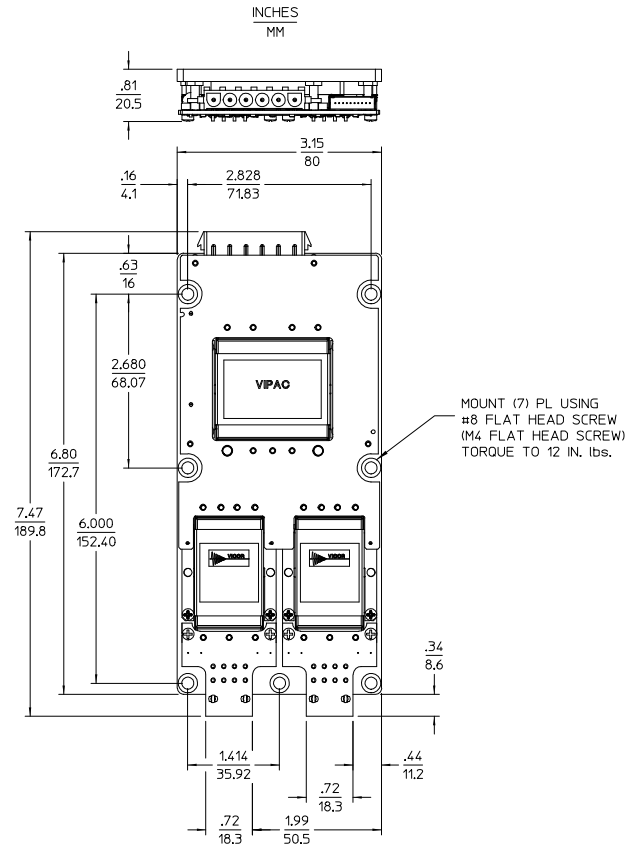
CONFIGURATION 'D'
COLDPLATE VERSION SHOWN
SINGLE OUTPUT
WITH PLUGMATES



CUSTOMER MUST WIRE OUTPUTS OF CONVERTERS IN PARALLEL AS SHOWN. REFER TO DATA SHEET FOR DETAILS.

TOLERANCES: $\frac{.XX}{MM} = \frac{.02}{.5}$ $\frac{.XXX}{MM} = \frac{.010}{.25}$

CONFIGURATION 'D'
COLDPLATE VERSION SHOWN
DUAL OUTPUT
WITH PLUGMATES



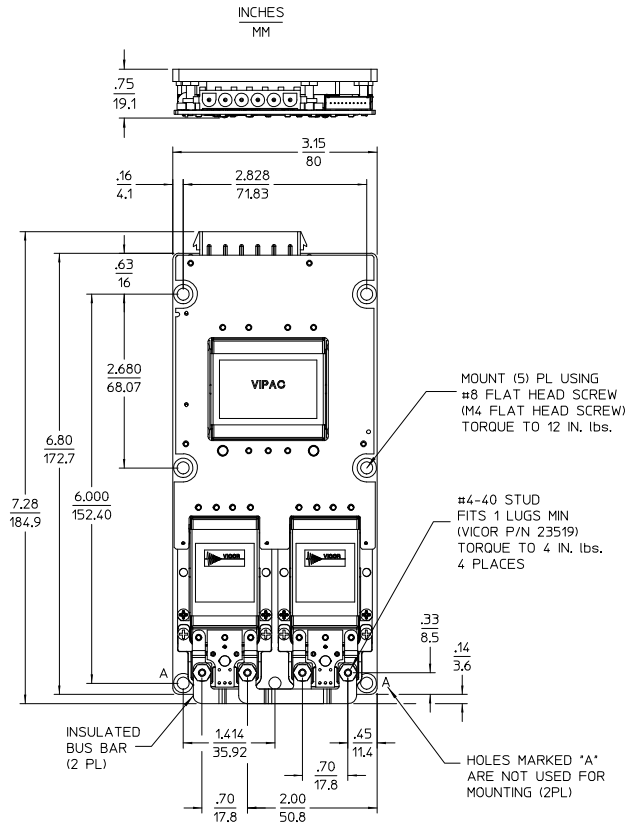
TOLERANCES: $\frac{.XX}{MM} = \frac{.02}{.5}$ $\frac{.XXX}{MM} = \frac{.010}{.25}$

DRAWN BY A. ADAM	DATE 10/9/06				
<small>UNLESS OTHERWISE SPECIFIED DIMENSIONS ARE IN INCHES TOLERANCES ARE: FRACTIONS DECIMALS ANGLES .XX+ .01 .XX- .005</small>					
THIRD ANGLE PROJECTION		SIZE D	PSCM NO. 67131	DWG NO. 33018	REV 1
DO NOT SCALE DRAWING		SCALE 1:1	SHEET 2 OF 2		

REV.	DESCRIPTION	DATE	APVD
1	RELEASE PER ECO REQUEST E080940	REJH 05/06/08	AK

CONFIGURATION 'D'

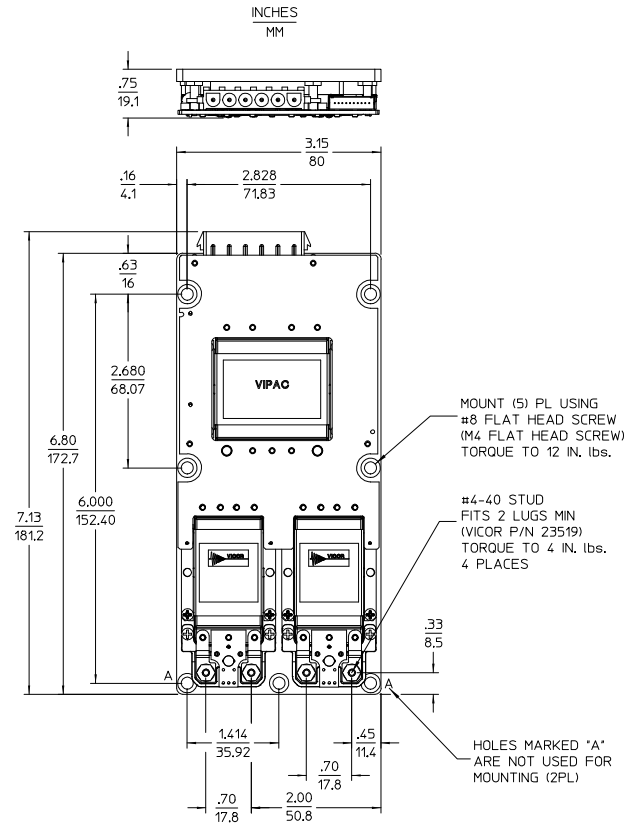
COLDPLATE VERSION SHOWN
SINGLE OUTPUT
WITH LUGMATES



TOLERANCES: .XX MM = .02 / 5 .XXX MM = .010 / 25

CONFIGURATION 'D'

COLDPLATE VERSION SHOWN
DUAL OUTPUT
WITH LUGMATES



TOLERANCES: .XX MM = .02 / 5 .XXX MM = .010 / 25

DRAWN BY A. ARDMAN	DATE 10/9/06				
<small>UNLESS OTHERWISE SPECIFIED DIMENSIONS ARE IN INCHES - TOLERANCES ARE: FRACTIONS DECIMALS ANGLES</small> <small>+1/64 -0.0015 +1/32 -0.0025 +1/16 -0.0040 +1/8 -0.0075</small>					
THIRD ANGLE PROJECTION		SIZE D	PSCM NO. 67131	DWG NO. 33018	REV 1
DO NOT SCALE DRAWING		SCALE 1:1	SHEET 1 OF 2		

OUTLINE DWG VIPAC CONFIG "D" AC