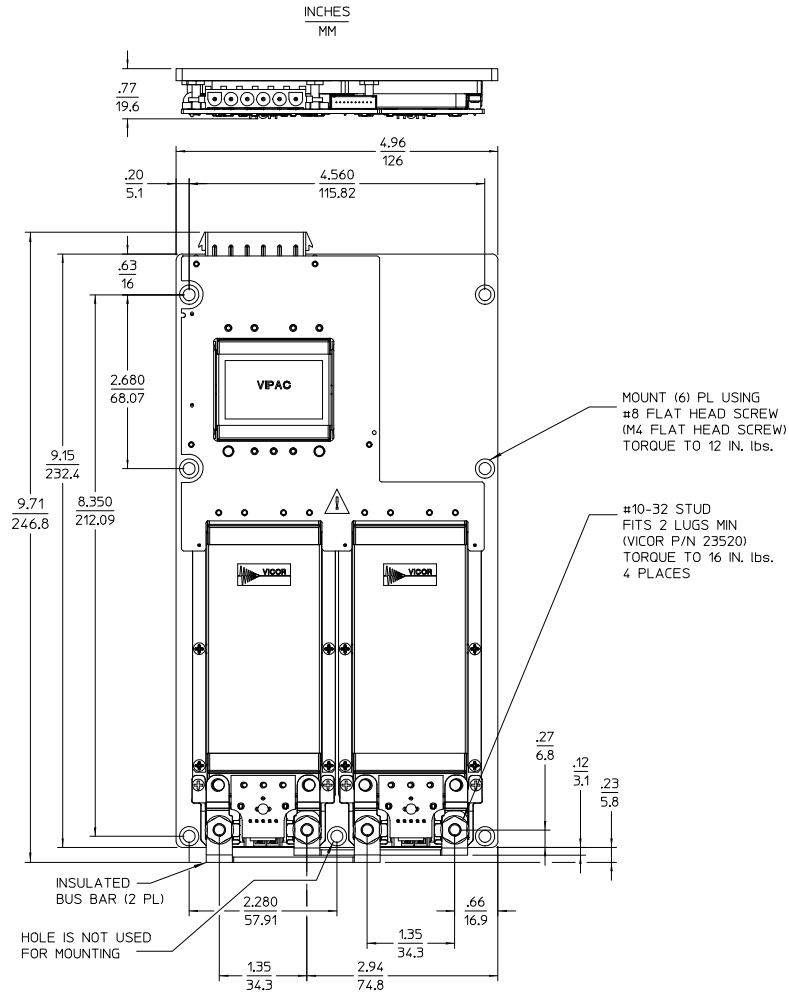


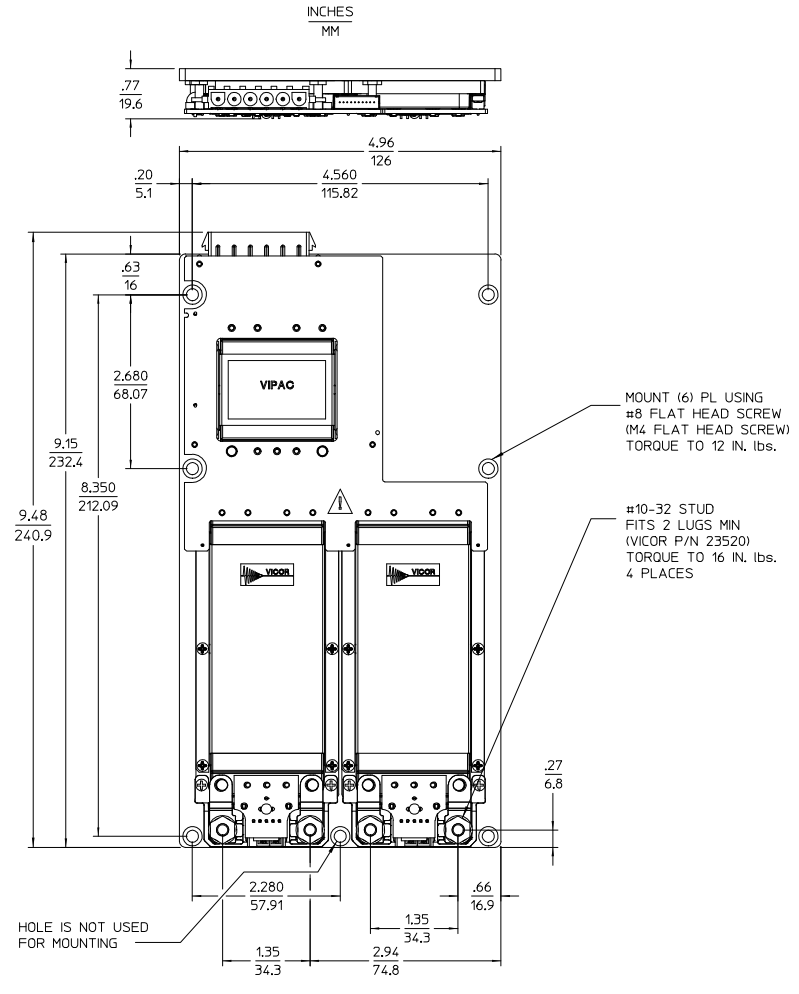
THIS DOCUMENT AND THE DATA DISCLOSED HEREIN OR HEREWITH IS NOT TO BE REPRODUCED, USED, OR DISCLOSED IN WHOLE OR IN PART TO ANYONE WITHOUT PERMISSION OF VICOR CORP.

REV.	DESCRIPTION	DATE	APVD
1	RELEASE PER ECO REQUEST E080940	REJM 05/06/08	AK

CONFIGURATION 'C'
 COLDPLATE VERSION SHOWN
 SINGLE OUTPUT
 WITH LUGMATES



CONFIGURATION 'C'
 COLDPLATE VERSION SHOWN
 DUAL OUTPUT
 WITH LUGMATES



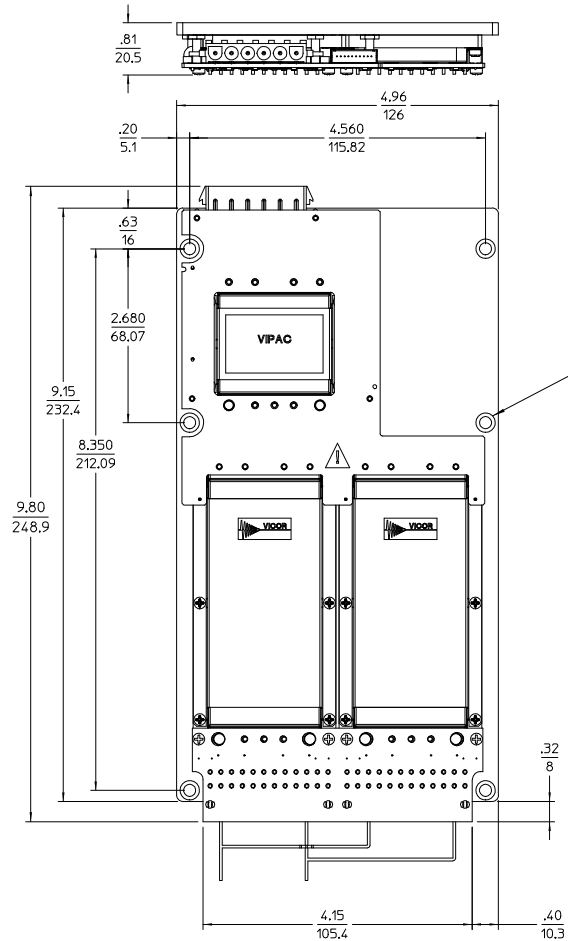
DRAWN BY A. RIZMAM	DATE 8/27/06				
UNLESS OTHERWISE SPECIFIED DIMENSIONS ARE IN INCHES TOLERANCES ARE: FRACTIONS DECIMALS ANGLES .XXX .XX .X .01 .005 .01					
THIRD ANGLE PROJECTION		SIZE D	PSCM NO. 67131	DWG NO. 33017	REV 1
DO NOT SCALE DRAWING		SCALE 1:1	SHEET 1 OF 2		

OUTLINE DWG VIPAC CONFIG "C" AC

REV.	DESCRIPTION	DATE	APVD
SEE SHEET 1			

CONFIGURATION 'C'
COLDPLATE VERSION SHOWN
SINGLE OUTPUT
WITH PLUGMATES

INCHES
MM



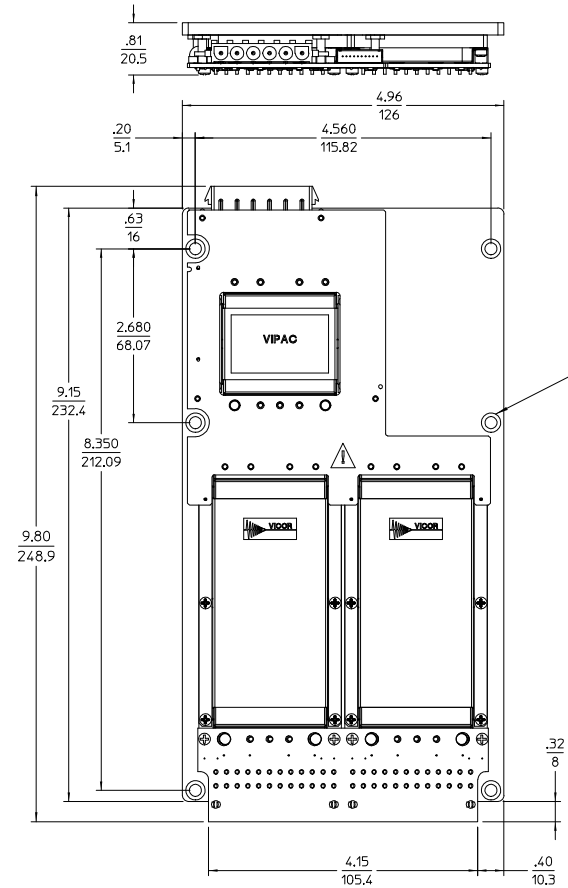
MOUNT (6) PL USING
 #8 FLAT HEAD SCREW
 (M4 FLAT HEAD SCREW)
 TORQUE TO 12 IN. lbs.

CUSTOMER MUST WIRE OUTPUTS OF
 CONVERTERS IN PARALLEL AS SHOWN.
 REFER TO DATA SHEET FOR DETAILS.

TOLERANCES: $\frac{.XX}{MM} = \frac{.02}{.5}$ $\frac{.XXX}{MM} = \frac{.010}{.25}$

CONFIGURATION 'C'
COLDPLATE VERSION SHOWN
DUAL OUTPUT
WITH PLUGMATES

INCHES
MM



MOUNT (6) PL USING
 #8 FLAT HEAD SCREW
 (M4 FLAT HEAD SCREW)
 TORQUE TO 12 IN. lbs.

TOLERANCES: $\frac{.XX}{MM} = \frac{.02}{.5}$ $\frac{.XXX}{MM} = \frac{.010}{.25}$

DRAWN BY A. ADAM	DATE 9/27/06	<p>OUTLINE DWG VIPAC CONFIG "C" AC</p>		
<small>UNLESS OTHERWISE SPECIFIED DIMENSIONS ARE IN INCHES TOLERANCES ARE: FRACTIONS DECIMALS ANGLES .XX .XX .XX .XX .XX .XX</small>				
THIRD ANGLE PROJECTION	SIZE D	PSCM NO. 67131	DWG NO. 33017	REV 1
DO NOT SCALE DRAWING	SCALE 1:1	SHEET 2 OF 2		