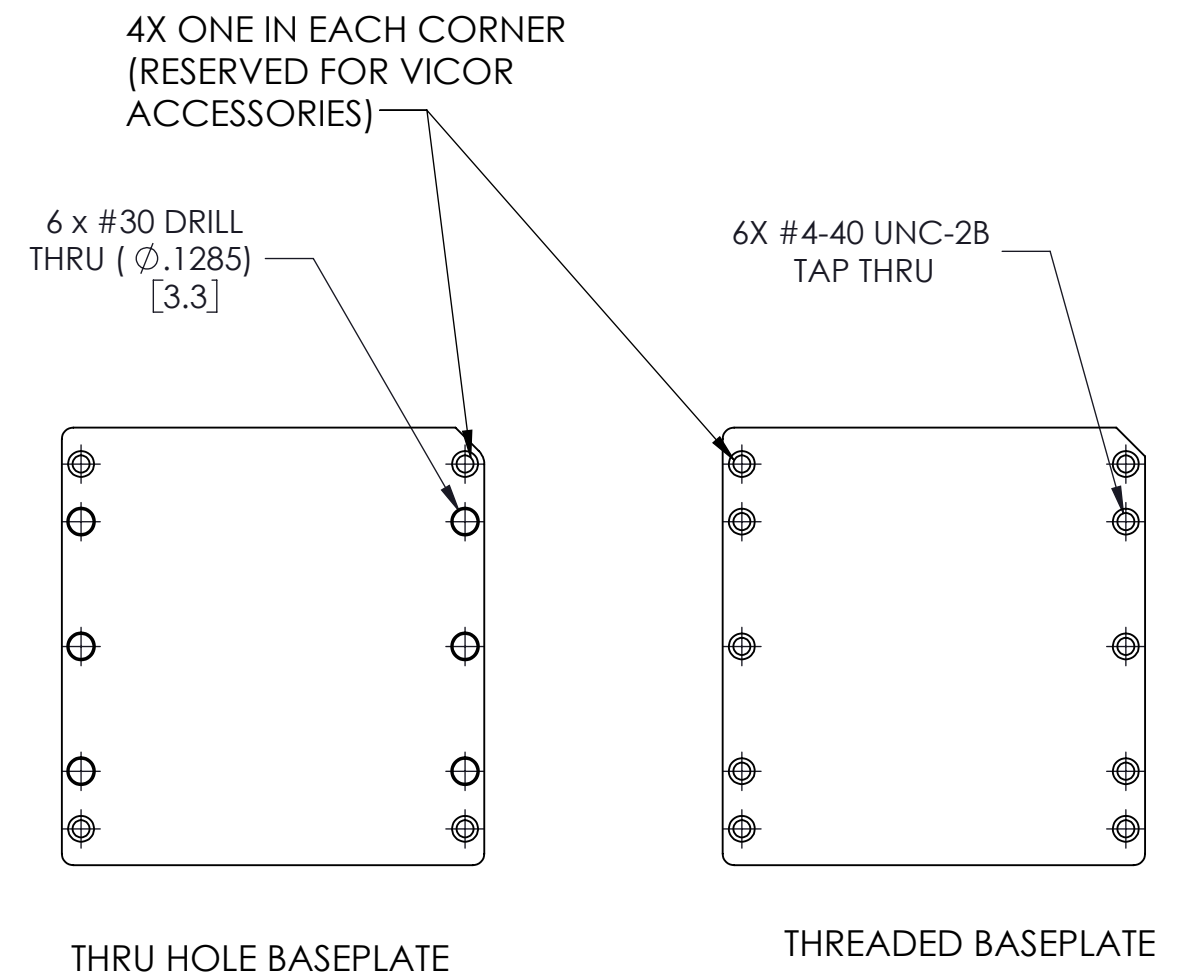
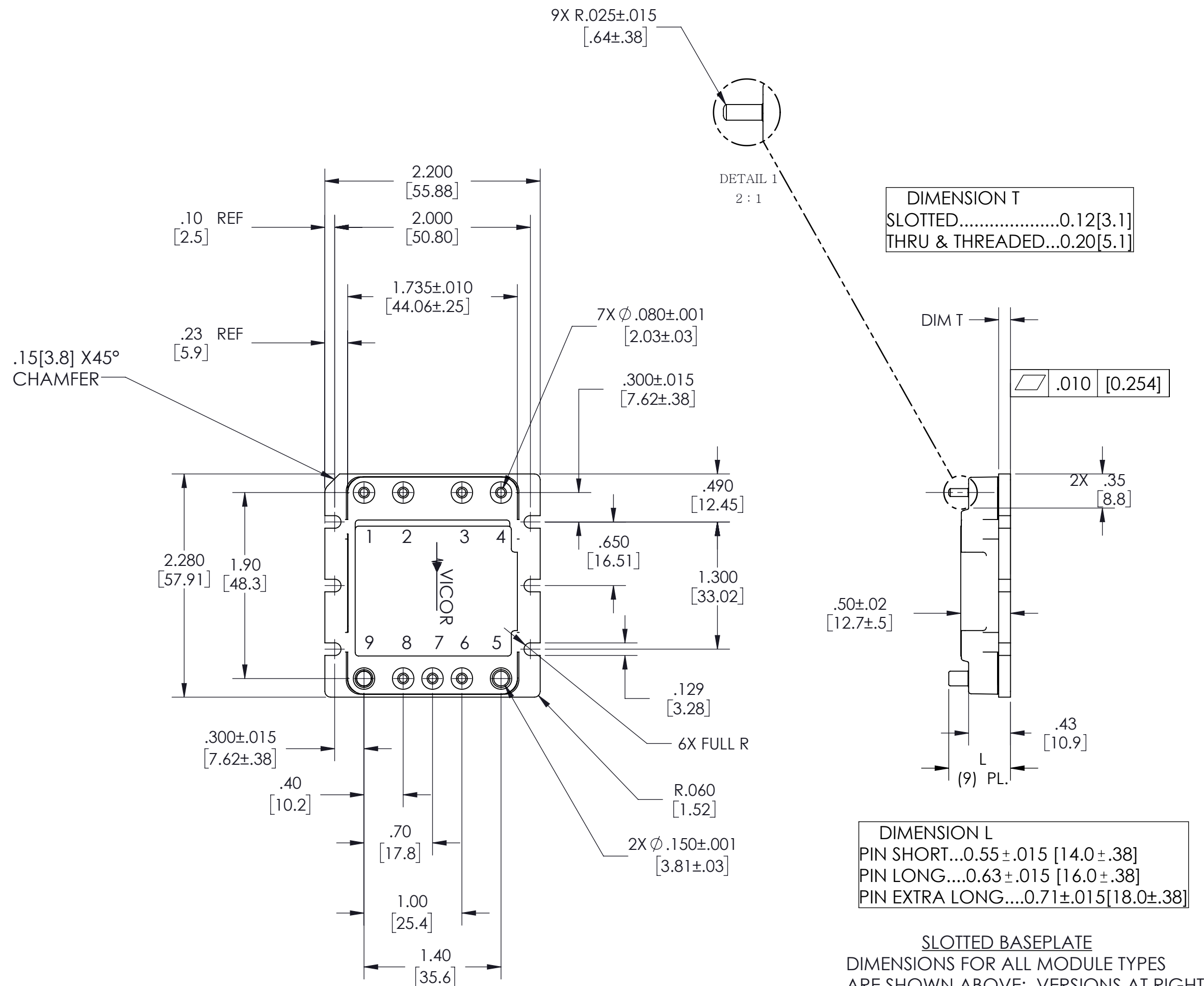
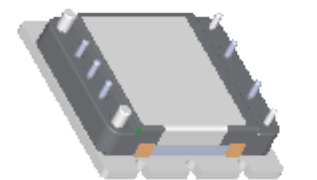


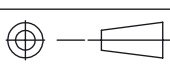
THIS DOCUMENT AND THE DATA DISCLOSED HEREIN OR HEREWITH IS NOT TO BE REPRODUCED, USED OR DISCLOSED IN WHOLE OR IN PART TO ANYONE WITHOUT THE PERMISSION OF VICOR CORP.

| REV. | DESCRIPTION | INTL | DATE | APVD |
|------|----------------------|------|----------|------|
| 1 | RELEASE PER E110024a | AR | 01/11/11 | KUK |
| 2 | REVISED PER E190189 | AY | 03/25/19 | RLT |
| 3 | REVISED PER E190280 | CL | 05/15/19 | RLT |
| 4 | REVISED PER E210665 | ZLP | 10/07/21 | REJH |



NOTES:
1. MATERIAL:
BASE: 6000 SERIES ALUMINUM
PIN PLATING: NICKEL BARRIER FOLLOWED BY (RoHS PINS) GOLD PLATE (30 MICRO INCH MIN); OR PALLADIUM (35 UIN MIN), FOLLOWED BY 3 TO 5 UIN GOLD. (NON-RoHS PINS) TIN/LEAD 90/10 BRIGHT



| | | | | | |
|--|--------------------|--|---------------------------|------------------------|-----------------|
| DRAWN BY kkamath | DATE 12/13/2010 | VICOR SWD | | | |
| UNLESS OTHERWISE SPECIFIED DIMENSIONS ARE : INCH / (MM) | | OUTLN DWG FAST TRACK MN PLASTIC | | | |
| TOLERANCES ARE: DECIMALS ANGLES X.XX [X.X] = ±0.01 [0.25] ±1° X.XXX [X.XX] = ±0.005 [0.127] | | SIZE C | CAGE CODE 67131 | DWG NO 37206 | REV 4 |
| THIRD ANGLE PROJECTION  DO NOT SCALE DRAWING | | SCALE 1:1 | SHEET 1 OF 1 | | |