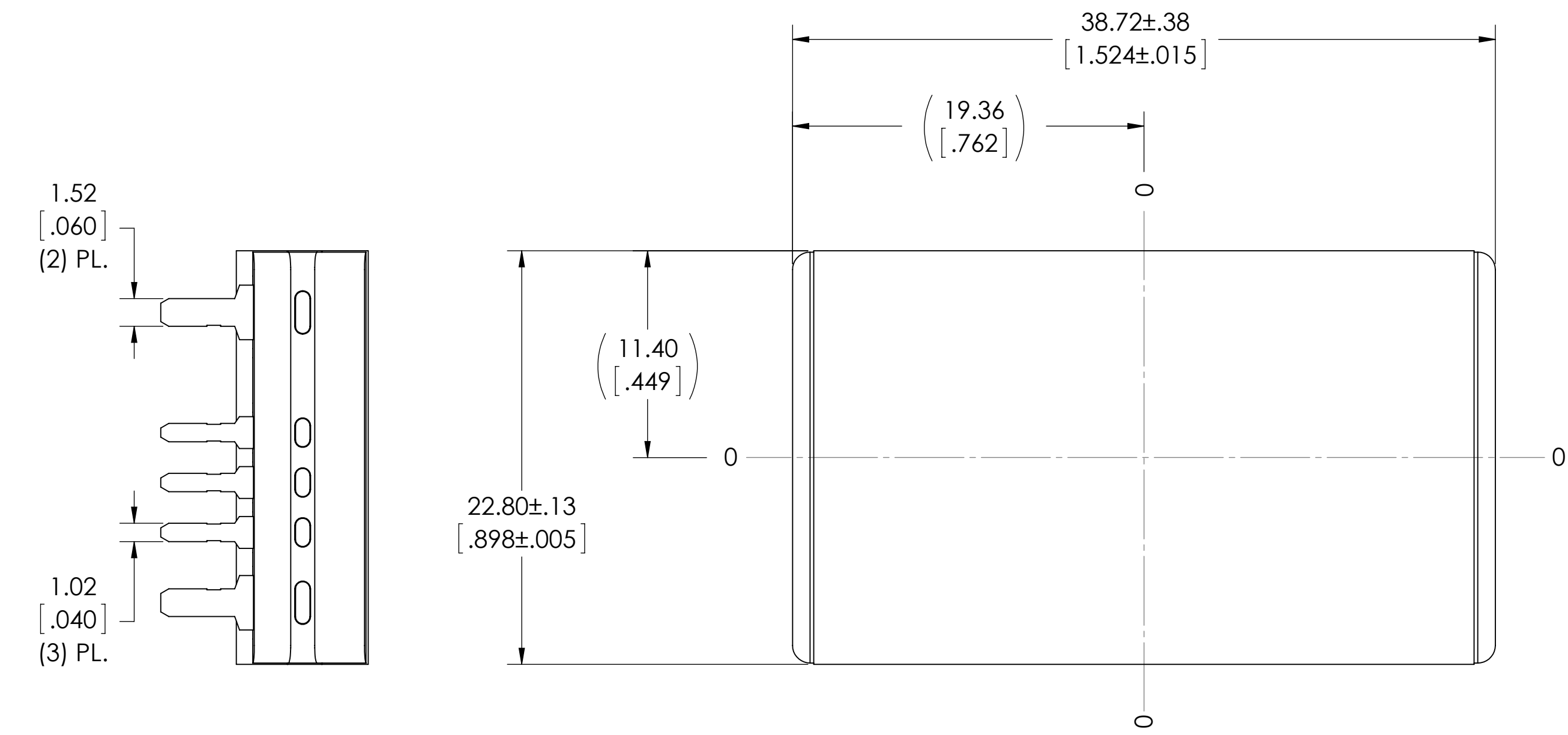
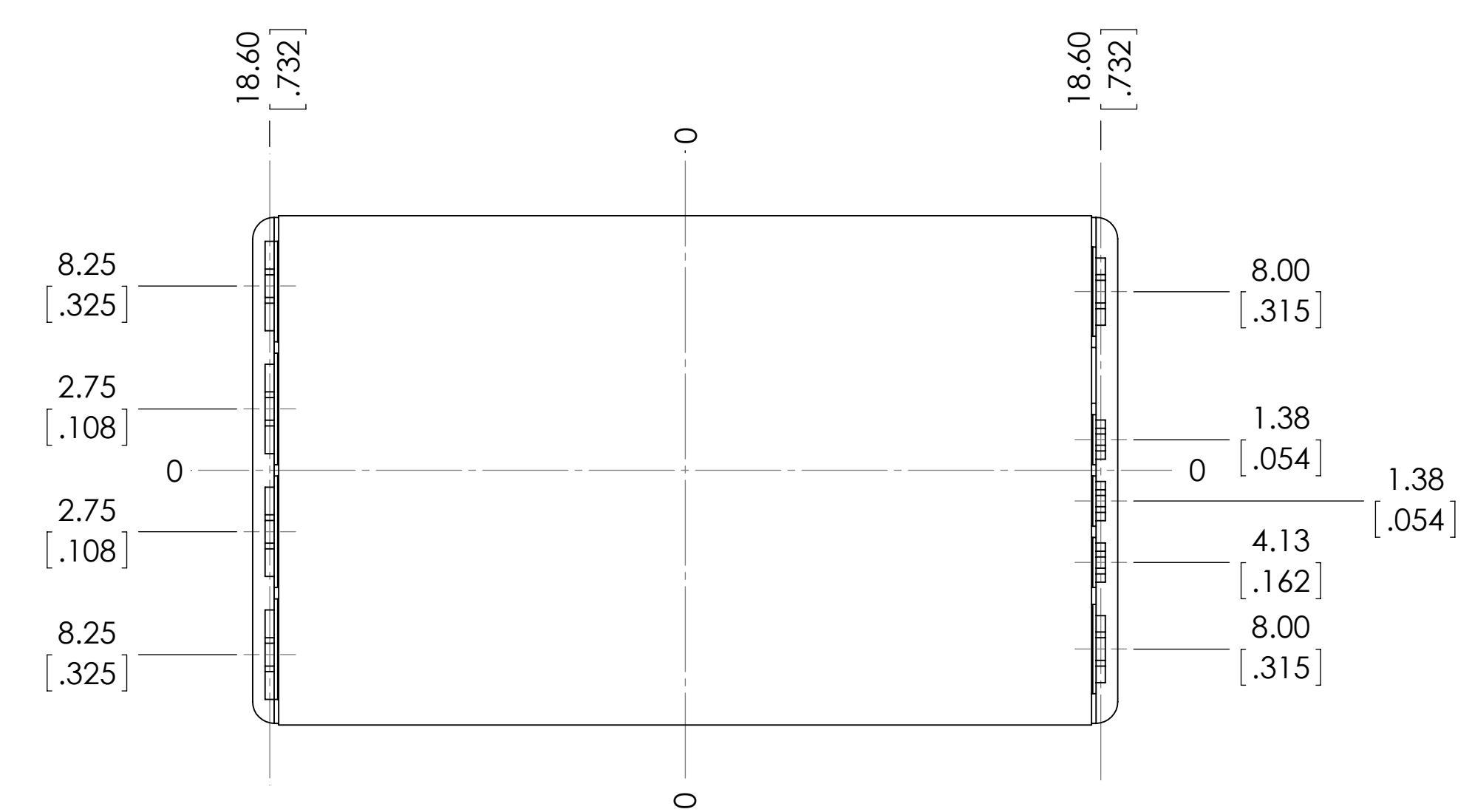
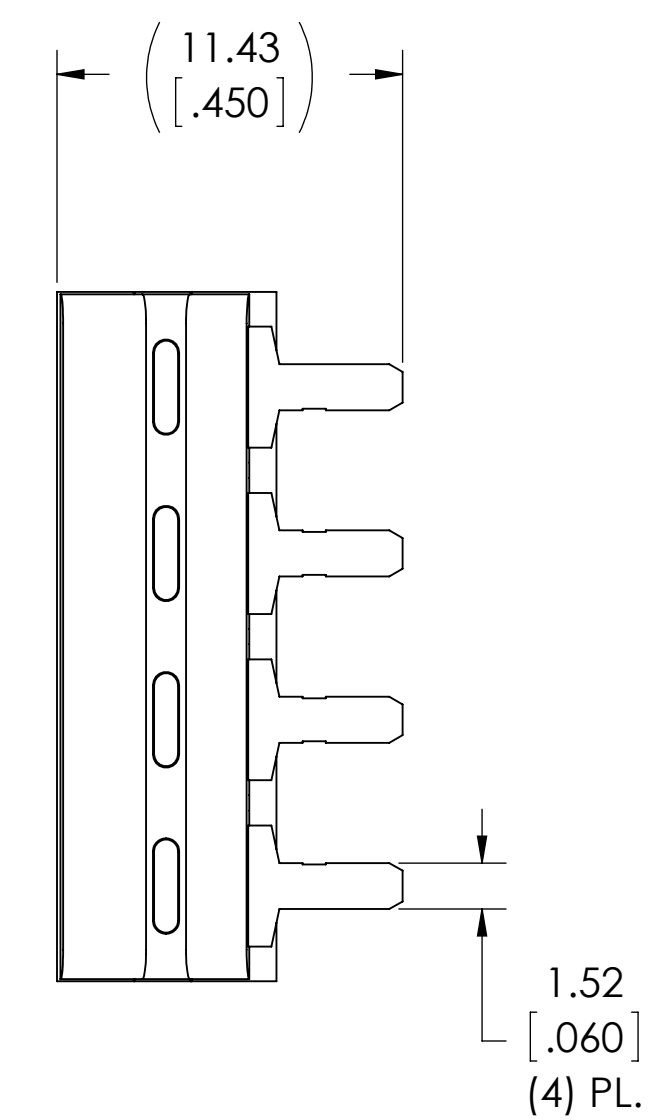


VICOR CONFIDENTIAL
THIS DOCUMENT AND THE DATA DISCLOSED HEREIN OR HEREWITH IS NOT TO BE REPRODUCED, COPIED, OR DISCLOSED IN WHOLE OR IN PART TO ANYONE WITHOUT THE PERMISSION OF VICOR CORP.

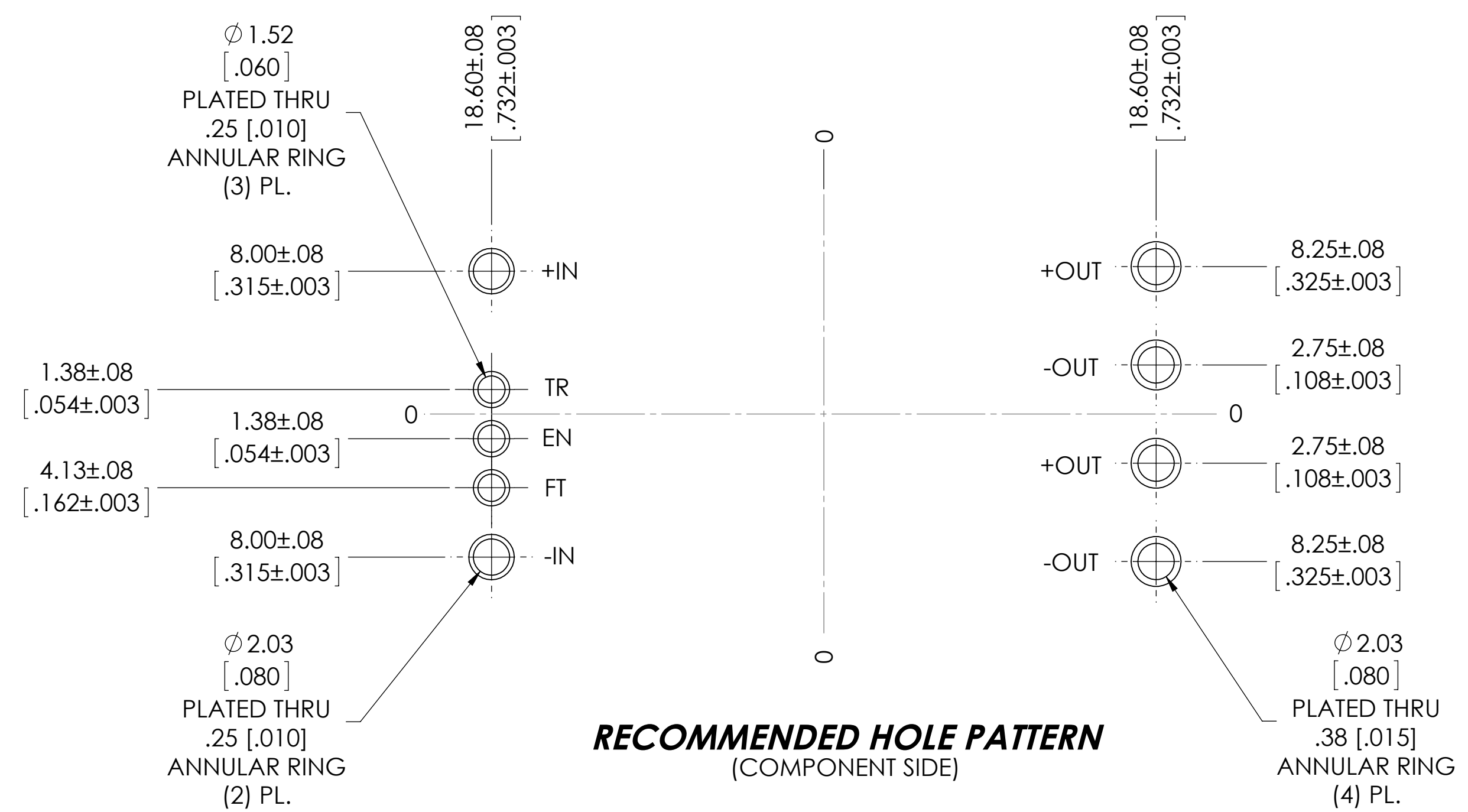
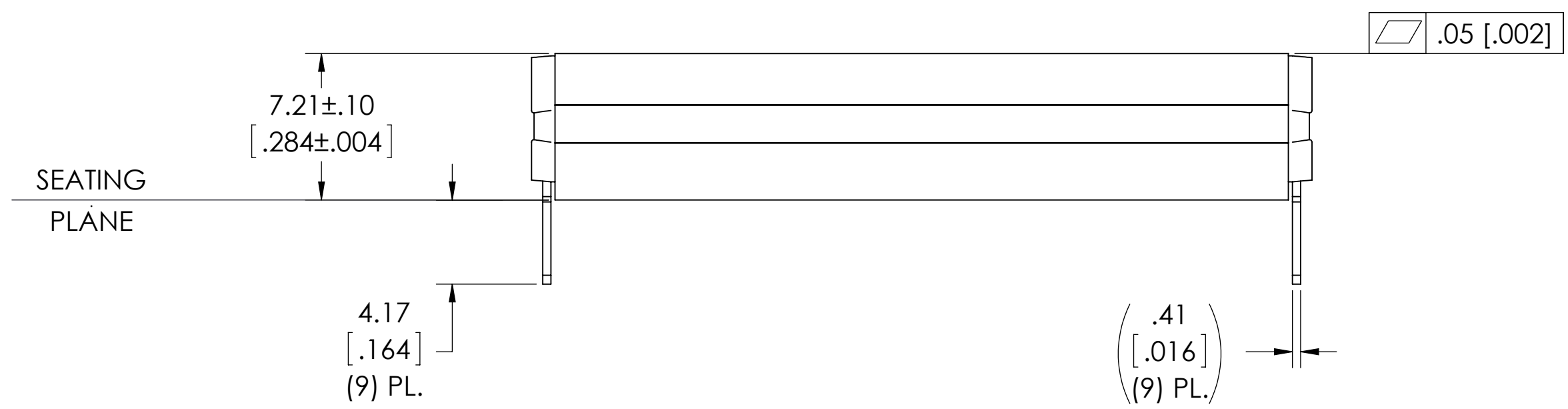
REV.	DESCRIPTION	INTL	DATE	APVD
1	RELEASED PER E140287	GCK	02/26/14	SE
2	REVISED PER E140568	GCK	04/21/14	REJH
3	REVISED PER E141377	SJW	12/09/14	REJH
4	REVISED PER E161035B	AP	10/26/16	BH
5	REVISED PER E170413	GCK	04/25/17	REJH



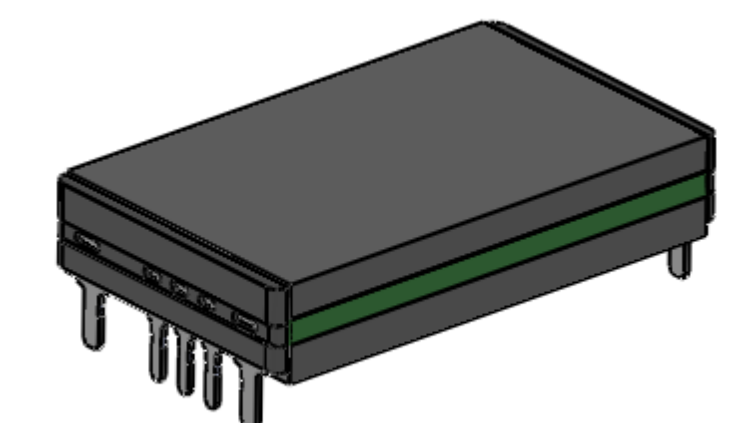
TOP VIEW (COMPONENT SIDE)



BOTTOM VIEW



RECOMMENDED HOLE PATTERN (COMPONENT SIDE)



NOTES:
1- RoHS COMPLIANT PER CST-0001 LATEST REVISION.

DRAWN BY R.E.J. Hickey	DATE 9/11/2013	VICOR SWD	
UNLESS OTHERWISE SPECIFIED DIMENSIONS ARE : MM / [INCH]		PRODUCT OUTLINE 3623 THRU HOLE	
TOLERANCES ARE: ANGLES XX.XX(.XX) = ±0.25 (0.01) 1° X.XX(.XX) = ±0.127 (0.005)		SIZE D	CAGE CODE 67131
THIRD ANGLE PROJECTION DO NOT SCALE DRAWING		DWG NO 40260	REV 5
SCALE 4:1		SHEET 1 OF 1	