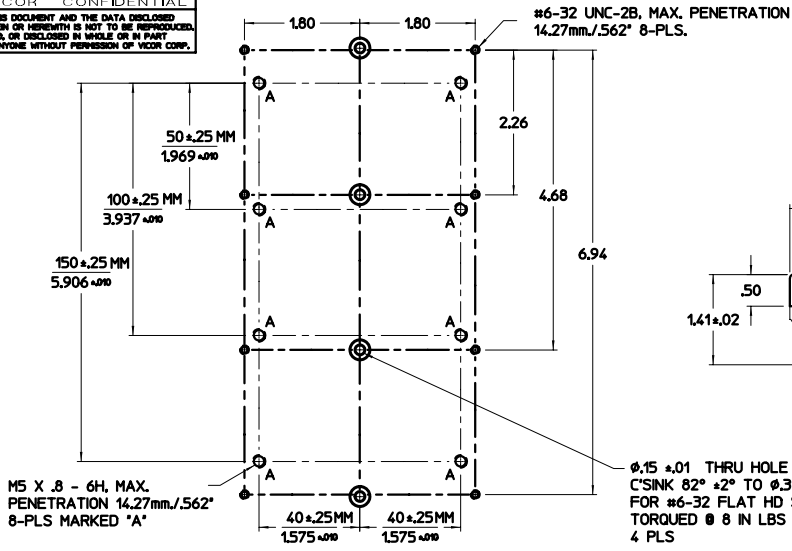
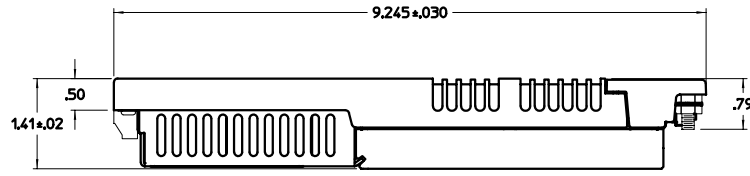


**VICOR CONFIDENTIAL**  
 THIS DOCUMENT AND THE DATA DISCLOSED  
 HEREIN OR HEREWITH IS NOT TO BE REPRODUCED,  
 USED, OR DISCLOSED IN WHOLE OR IN PART  
 TO ANYONE WITHOUT PERMISSION OF VICOR CORP.

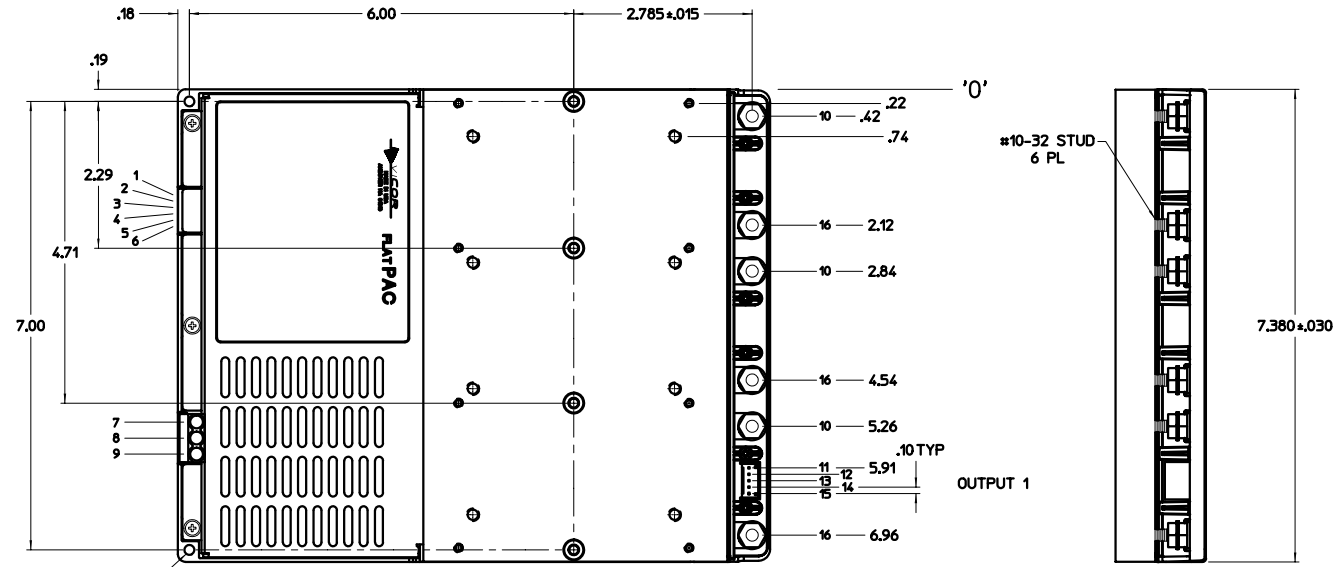
REV.	DESCRIPTION	DATE	AP'D
01	RELEASE PER E970285	DPK 7/2/97	RCH
02	REVISED PER E990099	DHC 3/23/98	RCH



MOUNTING HOLE PATTERN



- 1 MOD DIS -
- 2 MOD DIS +
- 3 AC OK -
- 4 AC OK +
- 5 BUS OK -
- 6 BUS OK +
- 7 AC IN L1
- 8 AC IN L2/N
- 9 CHASSIS GND
- 10 + OUT
- 11 + OUT SENSE
- 12 + SENSE
- 13 TRIM
- 14 - SENSE
- 15 - OUT SENSE
- 16 - OUT



Ø.15 ±.01 THRU HOLE  
 FOR #6-32 SCREW  
 TORQUED 8 IN LBS  
 2 PLS

SINGLE OUTPUT  
 'N' CONFIGURATION

NOTES:  
 1. MOUNTING HOLE DIMENSIONS ARE METRIC INCH

DESIGNED BY	DATE	VICOR	
DRW'N BY	DATE		
DATE	DATE	OUTLINE DRAWING, 600 W A/R FLATPAC N CONFIG	
SCALE	SCALE	SIZE	REV
D	FULL	16757	02
SHEET		OF	
1		1	