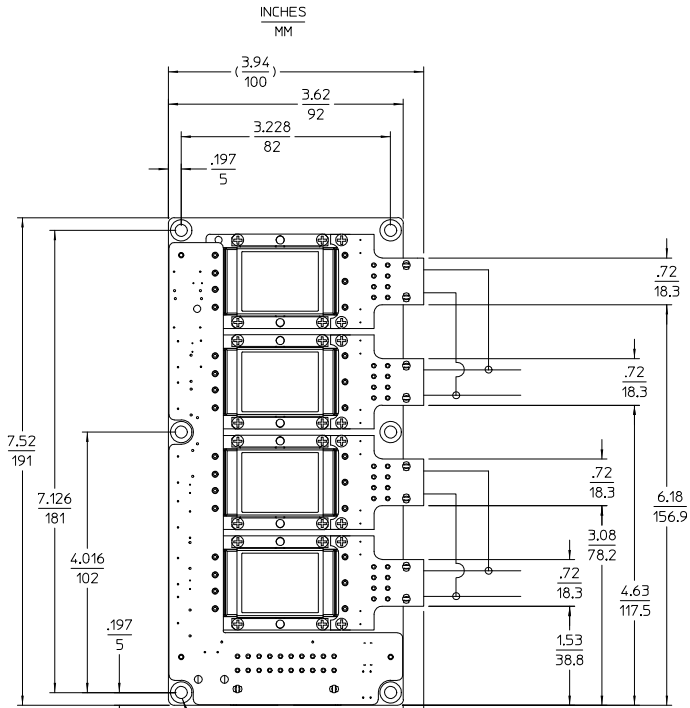
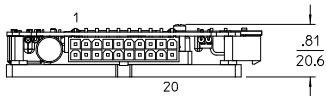


CONFIGURATION 'F'

DUAL OUTPUT
 WITH PLUGMATES



MOUNT (6) PL USING
 #8 FLAT HEAD SCREW
 (M4 FLAT HEAD SCREW)
 TORQUE TO 12 in. lbs.

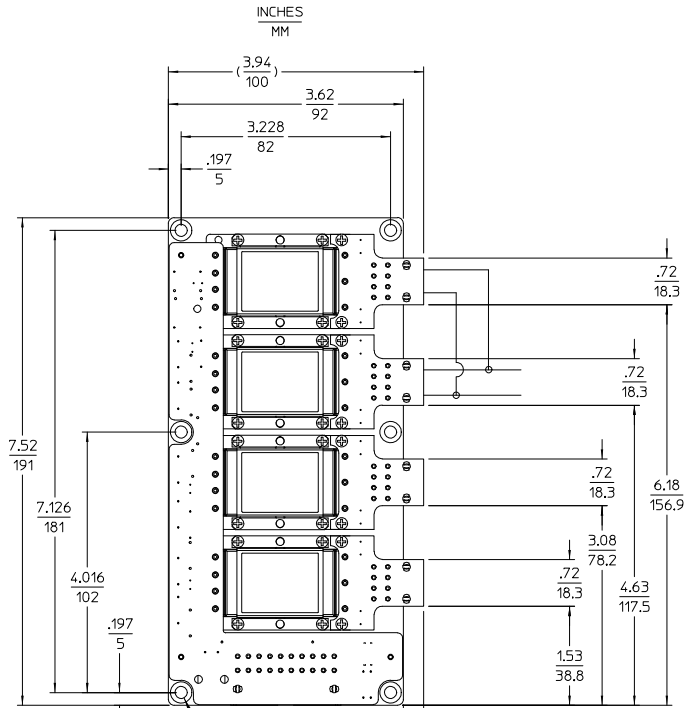


CUSTOMER MUST WIRE OUTPUTS OF
 CONVERTERS IN PARALLEL AS SHOWN
 REFER TO DATA SHEET FOR DETAILS

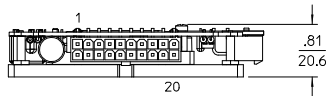
TOLERANCES: .XX = .02 .XXX = .010
 MM .5 MM .25

CONFIGURATION 'F'

TRIPLE OUTPUT
 WITH PLUGMATES



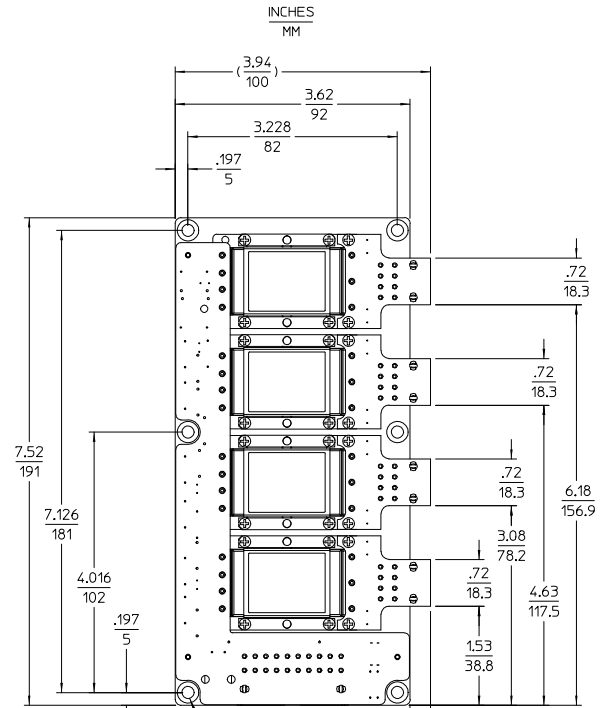
MOUNT (6) PL USING
 #8 FLAT HEAD SCREW
 (M4 FLAT HEAD SCREW)
 TORQUE TO 12 in. lbs.



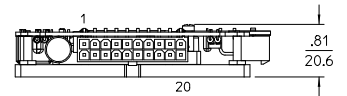
TOLERANCES: .XX = .02 .XXX = .010
 MM .5 MM .25

CONFIGURATION 'F'

QUADRUPLE OUTPUT
 WITH PLUGMATES



MOUNT (6) PL USING
 #8 FLAT HEAD SCREW
 (M4 FLAT HEAD SCREW)
 TORQUE TO 12 in. lbs.



TOLERANCES: .XX = .02 .XXX = .010
 MM .5 MM .25

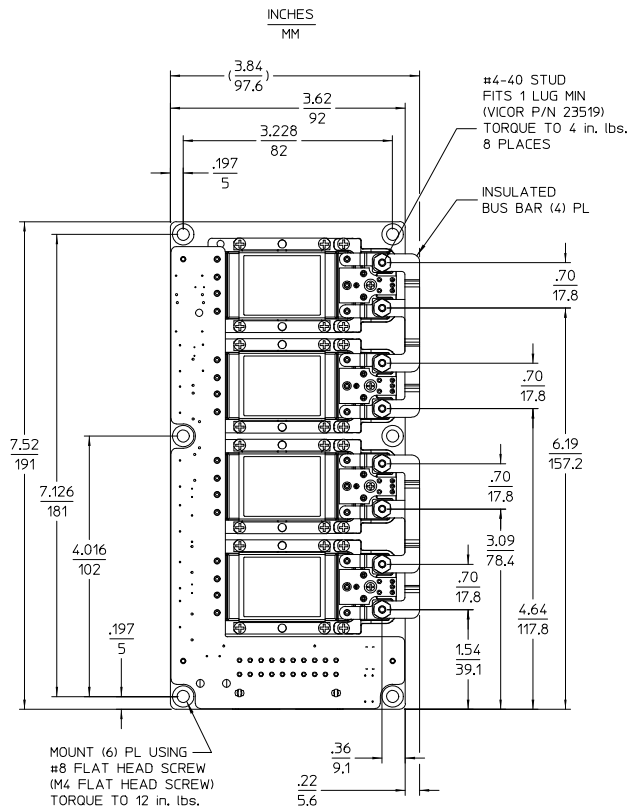
DRAWN BY A. ARDMAN	DATE 09/12/08	VICOR		
UNLESS OTHERWISE SPECIFIED DIMENSIONS ARE IN INCHES FRACTIONS DECIMALS ANGLES °/64 .01 .015/16 °				
THIRD ANGLE PROJECTION		SIZE D 67131	DWG NO. 24827	REV 2
DO NOT SCALE DRAWING		SCALE 1:1	SHEET 2 OF 2	

VICOR CONFIDENTIAL
 THIS DOCUMENT AND THE DATA DISCLOSED
 HEREIN OR HEREWITH IS NOT TO BE REPRODUCED,
 USED, OR DISCLOSED IN WHOLE OR IN PART
 TO ANYONE WITHOUT PERMISSION OF VICOR CORP.

REV.	DESCRIPTION	DATE	APVD
1	RELEASED PER E0430434	PEI 09/20/04	FN
2	REVSD PER E0530178	AK 06/22/05	FN

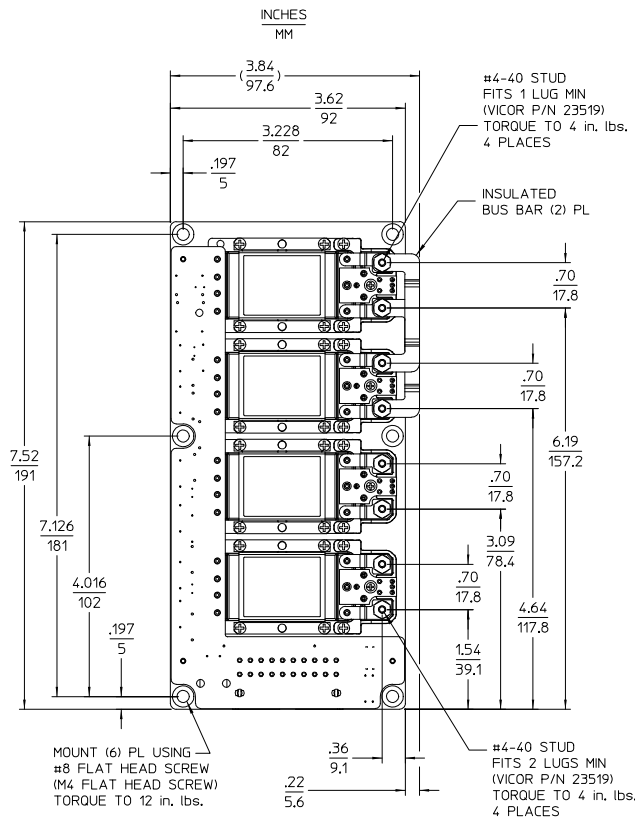
CONFIGURATION 'F'

DUAL OUTPUT WITH LUGMATES



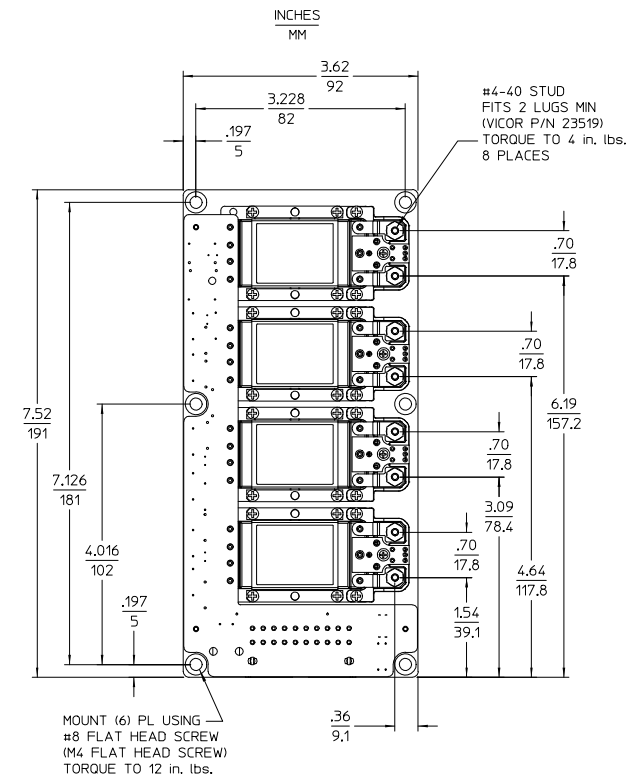
CONFIGURATION 'F'

TRIPLE OUTPUT WITH LUGMATES



CONFIGURATION 'F'

QUADRUPLE OUTPUT WITH LUGMATES



DRAWN BY A. RIZMAR	DATE 09/19/02			
UNLESS OTHERWISE SPECIFIED DIMENSIONS ARE IN INCHES TOLERANCES ARE: FRACTIONS DECIMALS ANGLES .XX .XX .XX .5 .5 .5 .010 .010 .010				
THIRD ANGLE PROJECTION	SIZE D	PSCN NO. 67131	DWG NO. 24827	REV 2
DO NOT SCALE DRAWING	SCALE 1:1	SHEET 1	OF 2	

OUTLINE DRAWING
VIPAC ARRAY CONFIG 'F'