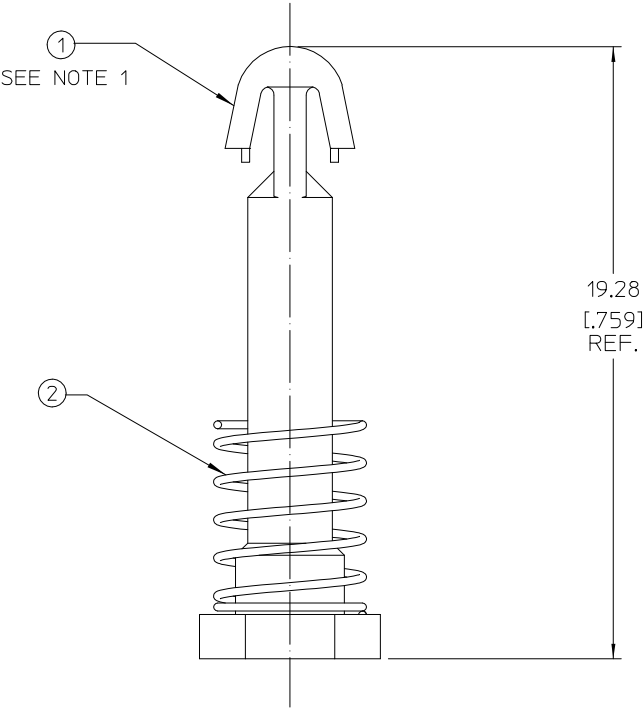
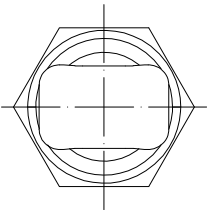





THIS DOCUMENT AND THE DATA DISCLOSED
HEREIN OR HEREWITH IS NOT TO BE REPRODUCED,
USED, OR DISCLOSED IN WHOLE OR IN PART
TO ANYONE WITHOUT PERMISSION OF VICOR CORP.

REV.	DESCRIPTION	DATE	APVD
1	RELEASED PER E071774	JS 08/15/07	REJH



- NOTES:
- 1. FOR A LIST OF PARTS SEE BOM NO. 33624.
 - 2. ITEM 1 IS BLUE.
 - 3. RoHS COMPLIANT PER CST-0001 LATEST REVISION.

DRAWN BY <i>R.E.J.Hickey</i>		DATE <i>03/14/07</i>	
			
UNLESS OTHERWISE SPECIFIED DIMENSIONS ARE MM (INCH)- TOLERANCES ARE: DECIMALS ANGLES .XX = ± 0.25 [.01] ± 1° .XXX = ± 0.127 [.005]			
THIRD ANGLE PROJECTION 		ASSY DWG BLUE PIN VIC J-LEAD PUSH PIN (19.3mm)	
SIZE  67131		FSCM NO. DWG NO 33629	
DO NOT SCALE DRAWING		REV 1	
SCALE 8:1		SHEET 1 OF 1	